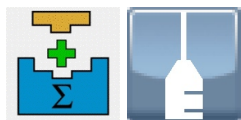
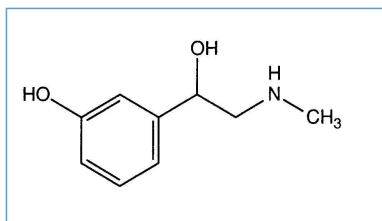


Stabilis



Phenylephrine hydrochloride



Noms commerciaux

Biorphen	
Fedalefrina	Argentine
Fencel	Inde
Fenilefrina	Argentine, Espagne
Fenylefrin	Islande
Frenin	Inde
Neo - Synephrine	Canada
Neosynephrine	France
Phenylephrin	Allemagne, Suisse
Phenylephrine	Canada, Grande Bretagne, Iran



Stabilité des solutions

PVC		0,1 & 0,2 mg/ml	25°C		14			1891
		0,1 mg/ml	-20°C		30			2194
		0,1 mg/ml	23-25°C		30			2194
		0,1 mg/ml	3-5°C		30			2194
		0,02 mg/ml	2-8°C		24			3770
		0,02 mg/ml	25°C		4			3770
		0,1 mg/ml	2-8°C		24			3770
		0,1 mg/ml	25°C		4			3770



Stabilité en mélange

		2,5 mg/ml	25°C		Lidocaine hydrochloride : 20 mg/ml	66		1331



Facteur influençant la stabilité

	PH >7			3620
--	-------	--	--	------



Compatibilités

<input checked="" type="checkbox"/>	Phenylephrine hydrochloride : 0.04 mg/ml Amiodarone hydrochloride : 4 mg/ml		1036
<input checked="" type="checkbox"/>	Phenylephrine hydrochloride : 0,01 mg/ml Amoxicillin sodium / clavulanic acid : 100/10 mg/ml		3824
	<input checked="" type="checkbox"/> Phenylephrine hydrochloride <input checked="" type="checkbox"/> Amoxicillin sodium / clavulanic acid		3545
<input checked="" type="checkbox"/>	Phenylephrine hydrochloride : 1 mg/ml Anidulafungin : 0.5 mg/ml		1982
<input checked="" type="checkbox"/>	Phenylephrine hydrochloride : 10 mg/ml Argatroban : 1 mg/ml		1964
<input checked="" type="checkbox"/>	Phenylephrine hydrochloride : 1 mg/ml Bivalirudin : 5 mg/ml		1713
<input checked="" type="checkbox"/>	Phenylephrine hydrochloride : 10 mg/ml Bivalirudin : 5 mg/ml		1944
<input checked="" type="checkbox"/>	Phenylephrine hydrochloride : 1 mg/ml Caspofungin acetate : 0,7 mg/ml		2247
<input checked="" type="checkbox"/>	Phenylephrine hydrochloride : 1 mg/ml Cefiderocol sulfate tosylate : 20 mg/mL		4528
<input checked="" type="checkbox"/>	Phenylephrine hydrochloride : 1 mg/ml Ceftolozane / tazobactam : 10/5 mg/ml		3828
<input checked="" type="checkbox"/>	Phenylephrine hydrochloride : 1 mg/ml Cisatracurium besylate : 0.1 >> 5 mg/ml		299
<input checked="" type="checkbox"/>	Phenylephrine hydrochloride : 0.04 mg/ml Dobutamine hydrochloride : 2 mg/ml		1041
<input checked="" type="checkbox"/>	Phenylephrine hydrochloride : 1 mg/ml Doripenem : 5 mg/ml		2262
<input checked="" type="checkbox"/>	Phenylephrine hydrochloride : 1 mg/ml Eravacycline : 0,6 mg/ml		4434
<input checked="" type="checkbox"/>	Phenylephrine hydrochloride : 10 mg/ml Etomidate : 2 mg/ml		319
<input checked="" type="checkbox"/>	Phenylephrine hydrochloride : 0.02 mg/ml Famotidine : 0.2 mg/ml		398
<input checked="" type="checkbox"/>	Phenylephrine hydrochloride : 1 mg/ml Fenoldopam mesylate : 80 µg/ml		1803
<input checked="" type="checkbox"/>	Phenylephrine hydrochloride : 1 mg/ml Fosfomicin : 30 mg/ml		4055
	<input checked="" type="checkbox"/> Phenylephrine hydrochloride : 0.64 mg/ml <input checked="" type="checkbox"/> Furosemide : 4 mg/ml		2116
<input checked="" type="checkbox"/>	Phenylephrine hydrochloride : 1 mg/ml Furosemide : 10 mg/ml		3210
<input checked="" type="checkbox"/>	Phenylephrine hydrochloride : 0.02 mg/ml Haloperidol lactate : 0.5 & 5 mg/ml		403

		Phenylephrine hydrochloride : 1 mg/ml Hetastarch : 60 mg/ml		1721
		Phenylephrine hydrochloride : 0,2 mg/ml Imipenem-Cilastatin / Relebactam : 5 mg/ml		4433
		Phenylephrine hydrochloride Iron (polymaltose)		3620
		Phenylephrine hydrochloride : 1 mg/ml Isavuconazonium sulfate : 1.5 mg/ml		3829
		Phenylephrine hydrochloride : 1 mg/ml Lansoprazole : 0.55 mg/ml		1625
		Phenylephrine hydrochloride : 10 mg/ml Levofloxacin : 5 mg/ml		1072
		Phenylephrine hydrochloride : 2.5 mg/ml Lidocaine hydrochloride : 20 mg/ml		1331
		Phenylephrine hydrochloride : 1 mg/ml Micafungin : 1.5 mg/ml		2108
		Phenylephrine hydrochloride : 0.2 mg/ml Oritavancin : 0.8 >>2 mg/ml		3152
		Phenylephrine hydrochloride : 10 mg/ml Paracetamol : 10 mg/ml		4742
		Phenylephrine hydrochloride Phenytoin sodium		3620
		Phenylephrine hydrochloride : 1 mg/ml Plazomicin sulfate : 24 mg/ml		4145
		Phenylephrine hydrochloride : 0.1 mg/ml Propofol : 10 mg/ml		300
		Phenylephrine hydrochloride : 0.1 mg/ml Propofol		660
		Phenylephrine hydrochloride : 10 mg/ml Propofol : 2 mg/ml		319
		Phenylephrine hydrochloride : 1 mg/ml Remifentanyl hydrochloride : 25 & 250 µg/ml		59
		Phenylephrine hydrochloride Sodium bicarbonate		3620
		Phenylephrine hydrochloride : 1 mg/ml Sulbactam/durlobactam : 15/15 mg/ml		4801
		Phenylephrine hydrochloride : 1 mg/ml Tedizolid phosphate : 0.8 mg/ml		3827
		Phenylephrine hydrochloride : 1 mg/ml Telavancin hydrochloride : 7.5 mg/ml	RL	3254
		Phenylephrine hydrochloride : 1 mg/ml Telavancin hydrochloride : 7.5 mg/ml		3254
		Phenylephrine hydrochloride : 10 mg/ml Thiopental sodium : 25 mg/ml		319
		Phenylephrine hydrochloride : 0.04 mg/ml Vasopressin : 2 & 4 UI/ml		1801
		Phenylephrine hydrochloride	NaH CO3	3620
		Phenylephrine hydrochloride : 1 mg/ml Zidovudine : 4 mg/ml		337
		Phenylephrine hydrochloride : 0,04 mg/ml	Normo Sol®	4655



Voie d'administration



Bibliographie

	Type	Source
59	Revue	Trissel LA, Gilbert DL, Martinez JF, Kim MC. Compatibility of remifentanyl hydrochloride with selected drugs during simulated Y-site administration. Am J Health-Syst Pharm 1997 ; 54: 2192-2196.
299	Revue	Trissel LA, Martinez JF, Gilbert DL. Compatibility of cisatracurium besylate with selected drugs during simulated Y-site administration. Am J Health-Syst Pharm 1997 ; 54: 1735-1741.
300	Revue	Trissel LA, Gilbert DL, Martinez JF. Compatibility of propofol injectable emulsion with selected drugs during simulated Y-site administration. Am J Health-Syst Pharm 1997 ; 54: 1287-1292.
319	Revue	Hadzija BW, Lubarsky DA. Compatibility of etomidate, thiopental sodium, and propofol injections with drugs commonly administered during induction of anesthesia. Am J Health-Syst Pharm 1995 ; 52: 997-999.
337	Revue	Bashaw ED, Amantea MA, Minor JR, Galleli JF. Visual compatibility of zidovudine with other drugs during simulated Y-site administration. Am J Hosp Pharm 1988 ; 45: 2532-2533.
398	Revue	Jay GT, Fanikos J, Souney PF. Visual compatibility of famotidine with commonly used critical-care medications during simulated Y-site injection. Am J Hosp Pharm 1988 ; 45: 1556-1557.
403	Revue	Outman WR, Monolakis J. Visual compatibility of haloperidol lactate with 0.9% sodium chloride injection or injectable critical-care drugs during simulated Y-site injection. Am J Hosp Pharm 1991 ; 48: 1539-1541.
660	Revue	Michaels MR, Stauffer GL, Haas DP. Propofol compatibility with other intravenous drug products - Two new methods of evaluating IV emulsion compatibility. Ann Pharmacotherapy 1996 ; 30: 228-232.
1036	Revue	Hasegawa GR, Eder JF. Visual compatibility of amiodarone hydrochloride injection with other injectable drugs. Am J Hosp Pharm 1984 ; 41: 1379-1380.
1041	Revue	Hasegawa GR, Eder JF. Visual compatibility of dobutamine hydrochloride with other injectable drugs. Am J Hosp Pharm 1984 ; 41: 949-951.
1072	Revue	Saltsmann CL, Tom CM, Mitchell A, Fan JH, Gailey RA. Compatibility of levofloxacin with 34 medications during simulated Y-site administration. Am J Health-Syst Pharm 1999 ; 56: 1458-1459.
1331	Revue	Das Gupta V, Steward KR. Chemical stabilities of lignocaine hydrochloride and phenylephrine hydrochloride in aqueous solution. J Clin Hosp Pharm 1986 ; 11 : 449-452.
1625	Revue	Trissel LA, Saenz C, Williams YW, Ingram D. Incompatibilities of lansoprazole injection with other drugs during simulated Y-site coadministration. Int J Pharm Compound 2001 ; 5: 314-321.

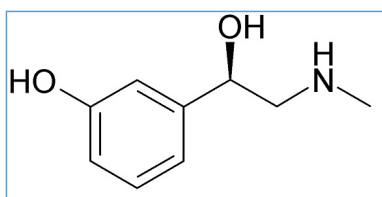
1713	Revue	Trissel LA, Saenz CA. Compatibility screening of bivalirudin during simulated Y-site administration with other drugs. Int J Pharm Compound 2002 ; 6: 311-315.
1721	Revue	Trissel LA, Williams KY, Baker MB. Compatibility screening of Hextend during simulated Y-site administration with other drugs. Int J Pharm Compound 2001 ; 5: 69-72.
1801	Revue	Feddema S, Rusho WJ, Tyler LS, Barker B. Physical compatibility of vasopressin with medications commonly used in cardiac arrest. Am J Health-Syst Pharm 2003 ; 60: 1271-1272.
1803	Revue	Trissel, LA, Saenz CA, Ogundele OB, Ingram D, Baker MB. Compatibility of fenoldopam mesylate with other drugs during simulated Y-site administration. Am J Health-Syst Pharm 2003 ; 60: 80-85.
1891	Revue	Gupta VD. Chemical stability of phenylephrine hydrochloride after reconstitution in 0.9% sodium chloride injection for infusion. Int J Pharm Compound 2004 ; 8, 2: 153-155.
1944	Revue	Hartman CA, Faria CE, Mago K. Visual compatibility of bivalirudin with selected drugs. Am J Health-Syst Pharm 2004 ; 61: 1774.
1964	Revue	Hartman CA, Baroletti SA, Churchill WW et al. Visual compatibility of argatroban with selected drugs. Am J Health-Syst Pharm 2002 ; 59: 1784-1785.
1982	Revue	Trissel LA, Ogundele AB. Compatibility of anidulafungin with other drugs during simulated Y-site administration. Am J Health-Syst Pharm 2005 ; 62: 834-837.
2108	Revue	Trusley C, Kupiec TC, Trissel LA. Compatibility of micafungin injection with other drugs during simulated Y-site co-administration. Int J Pharm Compound 2006 ; 10: 230-232.
2116	Revue	Faria CE, Fiumara K, Patel N, Tran DC. Visual compatibility of furosemide with phenylephrine and vasopressine. Am J Health-Syst Pharm 2006 ; 63: 906-908.
2194	Revue	Kiser TH, Oldland AR, Fish DN. Stability of phenylephrine hydrochloride injection in polypropylene syringes. Am J Health-Syst Pharm 2007 ; 64, 10: 1092-1095.
2247	Revue	Chan P, Heatherly K, Kupiec T.C, Trissel L.A. Compatibility of caspofungin acetate injection with other drugs during simulated Y-site coadministration. Int J Pharm Compound 2008 ; 12, 3: 276-278.
2262	Revue	Brammer MK, Chan P, Heatherly K, Trusley C, Kupiec TC, Trissel LA, Psathas PA, Gilmor T, Schaufelberger D. Compatibility of doripenem with other drugs during simulated Y-site administration Am J Health-Syst Pharm 2008 ; 65: 1261-1265.
3152	Revue	Kumar A, Mann HJ. Visual compatibility of oritavancin diphosphate with selected coadministered drugs during simulated Y-site administration. Am J Health-Syst Pharm 2010 ; 67: 1640-1644.
3210	Revue	Jasti Bhaskara R, Saraf Poonam. Compatibility of Parenteral Furosemide with Seventeen Secondary Drugs Used in Standard Concentrations. Int J Pharm Compound 2011 ; 15, 3: 259-261.
3254	Revue	Housman S.T, Tessier P.R, Nicolau D.P, Kuti J.L. Physical compatibility of telavancin hydrochloride with select i.v. drugs during simulated Y-site administration Am J Health-Syst Pharm 2011 ; 68: 2265-2270.
3545	Laboratoire	Amoxicilline / acide clavulanique - Résumé des caractéristiques du produit Mylan SAS 2009

3620	Laboratoire	Phenylephrine - Summary of Product Characteristics Beacon Pharmaceuticals 2012
3770	Laboratoire	Phenylephrine hydrochloride (Vazculep®) - Summary of Product Characteristics Eclat Pharmaceuticals 2014
3824	Revue	Boudi S, Roy H, Forest JM, Leclair G. Compatibilité physique de l'association amoxicilline-acide clavulanique en injection avec plusieurs autres médicaments lors d'une administration en Y. Pharmactuel 2023 2023;56,3:91-98
3827	Poster	Ghazi I.M, Hamada Y, Nicolau D.P. Compatibility of tedizolid phosphate with selected intravenous drugs via simulated Y-site conditions. ASHP Midyear 2015
3828	Poster	Thabit A.K, Hamada Y, Nicolau D.P. Ceftazolidime/tazobactam physical compatibility during simulated Y-site administration. ASHP Midyear 2015
3829	Poster	So W, Kim L, Thabit A.K, Nicolau D.P, Kuti J.L. Compatibility of isavuconium sulfate during simulated Y-site administration. ASHP Midyear 2015
4055	Revue	Monogue M, Almarzoky Abuhussain S, Kuti J, Nicolau D. Physical compatibility of fosfomycin for injection with select i.v. drugs during simulated Y-site administration. Am J Health-Syst Pharm 2018 , 75, 1:36-44
4145	Revue	Asempta T.E, Avery L.M, Kidd J.M, Kuti J.L, Nicolau D.P. Physical compatibility of plazomicin with select i.v. drugs during simulated Y-site administration. Am J Health-Syst Pharm 2018 ;75,14:1048-1056
4433	Revue	Ghazi I.M, El Nekidy W.S, Sood A, Dulku A, Patel R, Patel K. Y-site Administration of Imipenem/Cilastatin/ Relebactam With Common Intravenous Medications Clin Ther 2020 ; 42, 3: 475-485.
4434	Revue	Avery L.M, Chen, I.H, Reyes, S, Nicolau, D.P, Kuti J.L. Assessment of the Physical Compatibility of Eravacycline and Common Parenteral Drugs During Simulated Y-site Administration. Clin Ther 2019 ; 41, 10: 2162-2170.
4528	Revue	Lu J, Liu Q, Kupiec T, Vail H, Lunch L, Fam D, Vu N. Physical Compatibility of Cefiderocol with Selected Intravenous Drugs During Simulated Y-site Administration. Int J Pharm Compound 2021 ;25,1:52-61
4655	Revue	Holyk A, Lindner A, Lindner S, Shippert B Physical compatibility of Normosol-R with critical care medications used in patients with COVID-19 during simulated Y-site administration. Am J Health-Syst Pharm 2022 ;79,1:27-33
4742	Revue	Macoviciuc M, Nguyen C, Forest J-M, Leclair G. Compatibilité physique de l'acétaminophène injectable avec 102 autres médicaments lors d'une administration en Y. Pharmactuel 2022 ; 55, 4: 247-255.
4801	Revue	Ruiz V, Yuwei Shen Y, Abouelhassan Y, Fouad A, Nicolau D, Kuti J. Physical compatibility of sulbactam/durlobactam with select intravenous drugs during simulated Y-site administration. Am J Health-Syst Pharm 2024 ;51,1:

Stabilis



Phenylephrine hydrochloride



Stabilité des préparations

		200 mg	NaHPO4 2 mg NaCl 0.9% 3,75 ml Eau ppi >> 10 ml	20-25°C		60		3669



Stabilité en mélange

		25°C		Tropicamide : Liquide Mydraticum® 5 mg/mL	90	3817
	Acide chlorhydrique 0,1N > pH 4.2-5.8 2-8°C			Tropicamide : Spécialité pharmaceutique Tropicamide USP 1% Bausch Cyclopentolate : Spécialité pharmaceutique Cyclopentolate USP 1% Bausch Lomb 7,5 mL	60	4111
	Acide chlorhydrique 0,1N > pH 4.2-5.8 2-8°C			Tropicamide : Spécialité pharmaceutique Tropicamide USP 1% Bausch Cyclopentolate : Spécialité pharmaceutique Cyclopentolate USP 1% Bausch Lomb 7,5 mL	60	4111



Bibliographie

	Type	Source
3669	Revue	Dreno C, Gicquel T, Harry .M, Tribut O, Aubin F, Brandhonneur N, Dollo G. Formulation and stability study of a pediatric 2% phenylephrine hydrochloride eye drop solution Ann Pharm Fr 2015 ; 73, 1: 31-36.
3817	Poster	Stordeur F, Chanat C, Brandely M.L, Chast F. A stability study of 25 mg/mL phenylephrine hydrochloride and 5 mg/mL tropicamide eye drops. Gerpac Congress, Giens, France 2015

4111	Revue	Camp N, Nadra J, Hughes S, Gilbert J, Zhao F. Stability of extemporaneously prepared ophtalmic solutions for mydriasis. Am J Health-Syst Pharm 2018 ;75,9:231-235
------	-------	---



Dictionnaire

 Sympathomimétique	 Injectable
 Noms commerciaux	 Stabilité des solutions
 Contenant	 Molécule
 Concentration	 Température
 Conservation	 Durée de stabilité
 Biosimilaire	 Données conflictuelles
 Bibliographie	 Polyvinyl chlorure
 Chlorure de sodium 0,9%	 Non précisée
 Jour	 Seringue polypropylène
 A l'abri de la lumière	 Lumière
 Non précisé	 NaCl 0,9% ou glucose 5%
 Heure	 Stabilité en mélange
 Solvant	 Molécule
 Eau ppi + bactériostatique	 Facteur influençant la stabilité
 Provoque	 Dégradation
 Compatibilités	 Compatible
 Incompatibilité non précisée	 Incompatible
 Glucose 5%	 Aucun
 Précipitation immédiate	 Solvant spécifique
 Précipitation en 4 heures	 Instabilité de l'émulsion à 6 heures
RL Ringer lactate	 Eau pour préparation injectable
 NaHCO ₃	 Turbidité immédiate
 Normosol®	 Voie d'administration
 Intraveineuse	 Perfusion intraveineuse
 Perfusion continue	 Intramusculaire
 Sous cutanée	 Bibliographie
 Collyre	 Stabilité des préparations
 Origine	 Excipient
 Verre	 Poudre
 Flacon plastique	 Dictionnaire