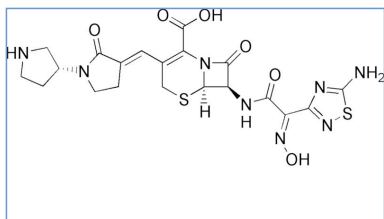


Stabilis



Ceftobiprole medocaril sodium



Noms commerciaux

| | |
|---------|--|
| Mabelio | France |
| Zevtera | Allemagne, Argentine, Chili, Espagne, Grande Bretagne, Pérou, Suisse |



Stabilité des solutions

| | | 50 mg/ml | 2-8°C | | 24 | | | 4650 |
|--|----|------------|-------|--|----|--|--|------|
| | | 50 mg/ml | 25°C | | 1 | | | 4650 |
| | | 2,67 mg/ml | 2-8°C | | 4 | | | 4650 |
| | | 2,67 mg/ml | 25°C | | 24 | | | 4650 |
| | | 2,67 mg/ml | 25°C | | 8 | | | 4650 |
| | | 2,67 mg/ml | 2-8°C | | 4 | | | 4650 |
| | | 2,67 mg/ml | 25°C | | 12 | | | 4650 |
| | | 2,67 mg/ml | 25°C | | 8 | | | 4650 |
| | | 50 mg/ml | 2-8°C | | 24 | | | 4650 |
| | | 50 mg/ml | 25°C | | 1 | | | 4650 |
| | RL | 2,67 mg/ml | 25°C | | 24 | | | 4650 |
| | RL | 2,67 mg/ml | 25°C | | 8 | | | 4650 |
| | | 2,67 mg/ml | 2-8°C | | 4 | | | 4650 |
| | | 2,67 mg/ml | 25°C | | 24 | | | 4650 |
| | | 2,67 mg/ml | 25°C | | 8 | | | 4650 |
| | | 2,67 mg/ml | 2-8°C | | 4 | | | 4650 |
| | | 2,67 mg/ml | 25°C | | 12 | | | 4650 |

| | | | | | | | | |
|--|----|------------|-------|--|----|--|--|------|
| | | 2,67 mg/ml | 25°C | | 8 | | | 4650 |
| | RL | 2,67 mg/ml | 25°C | | 24 | | | 4650 |
| | RL | 2,67 mg/ml | 25°C | | 8 | | | 4650 |
| | | 2,67 mg/ml | 2-8°C | | 4 | | | 4650 |
| | | 2,67 mg/ml | 25°C | | 24 | | | 4650 |
| | | 2,67 mg/ml | 25°C | | 8 | | | 4650 |
| | | 2,67 mg/ml | 2-8°C | | 4 | | | 4650 |
| | | 2,67 mg/ml | 25°C | | 12 | | | 4650 |
| | | 2,67 mg/ml | 25°C | | 8 | | | 4650 |
| | RL | 2,67 mg/ml | 25°C | | 24 | | | 4650 |
| | RL | 2,67 mg/ml | 25°C | | 8 | | | 4650 |



Facteur influençant la stabilité

| | | | | |
|--|--|--|--|------|
| | | | | 4650 |
|--|--|--|--|------|



Compatibilités

| | | Ceftobiprole medocaril sodium : 2 mg/ml Aciclovir sodium : 7 mg/ml | RL | 2269 |
|--|--|---|----|------|
| | | Ceftobiprole medocaril sodium Aciclovir sodium | | 4650 |
| | | Ceftobiprole medocaril sodium : 2 mg/ml Aciclovir sodium : 7 mg/ml | | 2269 |
| | | Ceftobiprole medocaril sodium Amikacin sulfate | | 3549 |
| | | Ceftobiprole medocaril sodium : 2 mg/ml Amikacin sulfate : 5 mg/ml | | 2269 |
| | | Ceftobiprole medocaril sodium Amikacin sulfate | | 4650 |
| | | Ceftobiprole medocaril sodium : 2 mg/ml Amikacin sulfate : 5 mg/ml | RL | 2269 |
| | | Ceftobiprole medocaril sodium : 2 mg/ml Aminophylline : 2.5 mg/ml | | 2269 |
| | | Ceftobiprole medocaril sodium : 2 mg/ml Aminophylline : 2.5 mg/ml | RL | 2269 |
| | | Ceftobiprole medocaril sodium : 2 mg/ml Amiodarone hydrochloride : 4 mg/ml | RL | 2269 |
| | | Ceftobiprole medocaril sodium : 2 mg/ml Amiodarone hydrochloride : 4 mg/ml | | 2269 |

| | | | | |
|--|--|--|----|------|
| | | Ceftobiprole medocartil sodium Amiodarone hydrochloride | | 4650 |
| | | Ceftobiprole medocartil sodium Amphotericin B | | 4650 |
| | | Ceftobiprole medocartil sodium : 2 mg/ml Amphotericin B : 0.6 mg/ml | RL | 2269 |
| | | Ceftobiprole medocartil sodium : 2 mg/ml Amphotericin B : 0.6 mg/ml | | 2269 |
| | | Ceftobiprole medocartil sodium : 2 mg/ml Azithromycine : 2 mg/ml | | 2269 |
| | | Ceftobiprole medocartil sodium : 2 mg/ml Azithromycine : 2 mg/ml | RL | 2269 |
| | | Ceftobiprole medocartil sodium : 2 mg/ml Bumetanide : 0.04 mg/ml | RL | 2269 |
| | | Ceftobiprole medocartil sodium : 2 mg/ml Bumetanide : 0.04 mg/ml | | 2269 |
| | | Ceftobiprole medocartil sodium : 2 mg/ml Calcium gluconate : 40 mg/ml | | 2269 |
| | | Ceftobiprole medocartil sodium : 2 mg/ml Calcium gluconate : 40 mg/ml | RL | 2269 |
| | | Ceftobiprole medocartil sodium Calcium gluconate | | 4650 |
| | | Ceftobiprole medocartil sodium Caspofungin acetate | | 4650 |
| | | Ceftobiprole medocartil sodium : 2 mg/ml Caspofungin acetate : 0.5 mg/ml | RL | 2269 |
| | | Ceftobiprole medocartil sodium : 2 mg/ml Caspofungin acetate : 0.5 mg/ml | | 2269 |
| | | Ceftobiprole medocartil sodium : 2 mg/ml Ciclosporin : 5 mg/ml | RL | 2269 |
| | | Ceftobiprole medocartil sodium : 2 mg/ml Ciclosporin : 5 mg/ml | | 2269 |
| | | Ceftobiprole medocartil sodium : 2 mg/ml Ciprofloxacin lactate : 2 mg/ml | RL | 2269 |
| | | Ceftobiprole medocartil sodium : 2 mg/ml Ciprofloxacin lactate : 2 mg/ml | | 2269 |
| | | Ceftobiprole medocartil sodium Ciprofloxacin lactate | | 4650 |
| | | Ceftobiprole medocartil sodium : 2 mg/ml Cisatracurium besylate : 0.5 mg/ml | RL | 2269 |
| | | Ceftobiprole medocartil sodium Cisatracurium besylate | | 4650 |
| | | Ceftobiprole medocartil sodium : 2 mg/ml Cisatracurium besylate : 0.5 mg/ml | | 2269 |
| | | Ceftobiprole medocartil sodium : 2 mg/ml Clindamycin phosphate : 10 mg/ml | RL | 2269 |
| | | Ceftobiprole medocartil sodium : 2 mg/ml Clindamycin phosphate : 10 mg/ml | | 2269 |
| | | Ceftobiprole medocartil sodium : 2 mg/ml Co-trimoxazole : 0.8/4 mg/ml | | 2269 |
| | | Ceftobiprole medocartil sodium : 2 mg/ml Co-trimoxazole : 0.8/4 mg/ml | RL | 2269 |

| | | | | |
|--|--|--|----|------|
| | | Ceftobiprole medocartil sodium : 2 mg/ml Dexamethasone sodium phosphate : 1 mg/ml | RL | 2269 |
| | | Ceftobiprole medocartil sodium : 2 mg/ml Dexamethasone sodium phosphate : 1 mg/ml | | 2269 |
| | | Ceftobiprole medocartil sodium : 2 mg/ml Diazepam : 5 mg/ml | | 2269 |
| | | Ceftobiprole medocartil sodium Diazepam | | 4650 |
| | | Ceftobiprole medocartil sodium : 2 mg/ml Diazepam : 5 mg/ml | RL | 2269 |
| | | Ceftobiprole medocartil sodium : 2 mg/ml Digoxin : 250 µg/ml | | 2269 |
| | | Ceftobiprole medocartil sodium : 2 mg/ml Digoxin : 250 µg/ml | RL | 2269 |
| | | Ceftobiprole medocartil sodium : 2 mg/ml Diltiazem hydrochloride : 5 mg/ml | | 2269 |
| | | Ceftobiprole medocartil sodium : 2 mg/ml Diltiazem hydrochloride : 5 mg/ml | RL | 2269 |
| | | Ceftobiprole medocartil sodium Diltiazem hydrochloride | | 4650 |
| | | Ceftobiprole medocartil sodium : 2 mg/ml Diphenhydramine hydrochloride : 2 mg/ml | RL | 2269 |
| | | Ceftobiprole medocartil sodium : 2 mg/ml Diphenhydramine hydrochloride : 2 mg/ml | | 2269 |
| | | Ceftobiprole medocartil sodium Diphenhydramine hydrochloride | | 4650 |
| | | Ceftobiprole medocartil sodium : 2 mg/ml Dobutamine hydrochloride : 4 mg/ml | | 2269 |
| | | Ceftobiprole medocartil sodium : 2 mg/ml Dobutamine hydrochloride : 4 mg/ml | RL | 2269 |
| | | Ceftobiprole medocartil sodium Dobutamine hydrochloride | | 4650 |
| | | Ceftobiprole medocartil sodium Dopamine hydrochloride | | 4650 |
| | | Ceftobiprole medocartil sodium : 2 mg/ml Dopamine hydrochloride : 3.2 mg/ml | RL | 2269 |
| | | Ceftobiprole medocartil sodium : 2 mg/ml Dopamine hydrochloride : 3.2 mg/ml | | 2269 |
| | | Ceftobiprole medocartil sodium : 2 mg/ml Doripenem : 5 mg/ml | RL | 2269 |
| | | Ceftobiprole medocartil sodium : 2 mg/ml Doripenem : 5 mg/ml | | 2269 |
| | | Ceftobiprole medocartil sodium : 2 mg/ml Enalaprilate : 0.1 mg/ml | RL | 2269 |
| | | Ceftobiprole medocartil sodium : 2 mg/ml Enalaprilate : 0.1 mg/ml | | 2269 |
| | | Ceftobiprole medocartil sodium Erythromycin lactobionate | | 3674 |
| | | Ceftobiprole medocartil sodium : 2 mg/ml Esomeprazole sodium : 0.4 mg/ml | | 2269 |
| | | Ceftobiprole medocartil sodium Esomeprazole sodium | | 4650 |

| | | | | |
|--|--|---|----|------|
| | | Ceftobiprole medocartil sodium : 2 mg/ml Esomeprazole sodium : 0.4 mg/ml | RL | 2269 |
| | | Ceftobiprole medocartil sodium Famotidine | | 4650 |
| | | Ceftobiprole medocartil sodium : 2 mg/ml Famotidine : 2 mg/ml | | 2269 |
| | | Ceftobiprole medocartil sodium : 2 mg/ml Famotidine : 2 mg/ml | RL | 2269 |
| | | Ceftobiprole medocartil sodium : 2 mg/ml Fentanyl citrate : 50 µg/ml | RL | 2269 |
| | | Ceftobiprole medocartil sodium : 2 mg/ml Fentanyl citrate : 50 µg/ml | | 2269 |
| | | Ceftobiprole medocartil sodium : 2 mg/ml Filgrastim : 30 µg/ml | RL | 2269 |
| | | Ceftobiprole medocartil sodium : 2 mg/ml Filgrastim : 30 µg/ml | | 2269 |
| | | Ceftobiprole medocartil sodium Filgrastim | | 4650 |
| | | Ceftobiprole medocartil sodium : 2 mg/ml Fluconazole : 2 mg/ml | RL | 2269 |
| | | Ceftobiprole medocartil sodium : 2 mg/ml Fluconazole : 2 mg/ml | | 2269 |
| | | Ceftobiprole medocartil sodium : 2 mg/ml Furosemide : 3 mg/ml | RL | 2269 |
| | | Ceftobiprole medocartil sodium : 2 mg/ml Furosemide : 3 mg/ml | | 2269 |
| | | Ceftobiprole medocartil sodium Gentamicin sulfate | | 3643 |
| | | Ceftobiprole medocartil sodium : 2 mg/ml Gentamicin sulfate : 5 mg/ml | RL | 2269 |
| | | Ceftobiprole medocartil sodium Gentamicin sulfate | | 4650 |
| | | Ceftobiprole medocartil sodium : 2 mg/ml Gentamicin sulfate : 5 mg/ml | | 2269 |
| | | Ceftobiprole medocartil sodium Gentamicin sulfate | | 3520 |
| | | Ceftobiprole medocartil sodium : 2 mg/ml Granisetron hydrochloride : 0.05 mg/ml | RL | 2269 |
| | | Ceftobiprole medocartil sodium : 2 mg/ml Granisetron hydrochloride : 0.05 mg/ml | | 2269 |
| | | Ceftobiprole medocartil sodium : 2 mg/ml Haloperidol lactate : 0.2 mg/ml | | 2269 |
| | | Ceftobiprole medocartil sodium Haloperidol lactate | | 4650 |
| | | Ceftobiprole medocartil sodium : 2 mg/ml Haloperidol lactate : 0.2 mg/ml | RL | 2269 |
| | | Ceftobiprole medocartil sodium : 2 mg/ml Heparin sodium : 100 UI/ml | | 2269 |
| | | Ceftobiprole medocartil sodium : 2 mg/ml Heparin sodium : 100 UI/ml | RL | 2269 |
| | | Ceftobiprole medocartil sodium : 2 mg/ml Hydrocortisone sodium succinate : 1 mg/ml | RL | 2269 |

| | | | | |
|--|--|---|----|------|
| | | Ceftobiprole medocartil sodium : 2 mg/ml Hydrocortisone sodium succinate : 1 mg/ml | | 2269 |
| | | Ceftobiprole medocartil sodium : 2 mg/ml Hydromorphone hydrochloride : 1 mg/ml | | 2269 |
| | | Ceftobiprole medocartil sodium : 2 mg/ml Hydromorphone hydrochloride : 1 mg/ml | RL | 2269 |
| | | Ceftobiprole medocartil sodium Hydromorphone hydrochloride | | 4650 |
| | | Ceftobiprole medocartil sodium : 2 mg/ml Hydroxyzine dihydrochloride : 2 mg/ml | RL | 2269 |
| | | Ceftobiprole medocartil sodium : 2 mg/ml Hydroxyzine dihydrochloride : 2 mg/ml | | 2269 |
| | | Ceftobiprole medocartil sodium Hydroxyzine dihydrochloride | | 4650 |
| | | Ceftobiprole medocartil sodium : 2 mg/ml Insulin : 1 UI/ml | RL | 2269 |
| | | Ceftobiprole medocartil sodium Insulin | | 4650 |
| | | Ceftobiprole medocartil sodium : 2 mg/ml Insulin : 1 UI/ml | | 2269 |
| | | Ceftobiprole medocartil sodium : 2 mg/ml Insulin lyspro : 10 UI/ml | RL | 2269 |
| | | Ceftobiprole medocartil sodium Insulin lyspro | | 4650 |
| | | Ceftobiprole medocartil sodium : 2 mg/ml Insulin lyspro : 10 UI/ml | | 2269 |
| | | Ceftobiprole medocartil sodium : 2 mg/ml Labetalol hydrochloride : 5 mg/ml | | 2269 |
| | | Ceftobiprole medocartil sodium : 2 mg/ml Labetalol hydrochloride : 5 mg/ml | RL | 2269 |
| | | Ceftobiprole medocartil sodium Labetalol hydrochloride | | 4650 |
| | | Ceftobiprole medocartil sodium : 2 mg/ml Levofloxacin : 5 mg/ml | | 2269 |
| | | Ceftobiprole medocartil sodium Levofloxacin | | 4650 |
| | | Ceftobiprole medocartil sodium : 2 mg/ml Levofloxacin : 5 mg/ml | RL | 2269 |
| | | Ceftobiprole medocartil sodium Lidocaine hydrochloride | | 4650 |
| | | Ceftobiprole medocartil sodium : 2 mg/ml Lidocaine hydrochloride : 10 mg/ml | RL | 2269 |
| | | Ceftobiprole medocartil sodium : 2 mg/ml Lidocaine hydrochloride : 10 mg/ml | | 2269 |
| | | Ceftobiprole medocartil sodium : 2 mg/ml Lorazepam : 0.5 mg/ml | RL | 2269 |
| | | Ceftobiprole medocartil sodium : 2 mg/ml Lorazepam : 0.5 mg/ml | | 2269 |
| | | Ceftobiprole medocartil sodium Magnesium sulfate | | 4650 |
| | | Ceftobiprole medocartil sodium : 2 mg/ml Magnesium sulfate : 10 mg/ml | RL | 2269 |

| | | | | |
|--|--|---|----|------|
| | | Ceftobiprole medocartil sodium : 2 mg/ml Magnesium sulfate : 100 mg/ml | | 2269 |
| | | Ceftobiprole medocartil sodium : 2 mg/ml Mannitol : 150 mg/ml | | 2269 |
| | | Ceftobiprole medocartil sodium : 2 mg/ml Mannitol : 150 mg/ml | RL | 2269 |
| | | Ceftobiprole medocartil sodium : 2 mg/ml Methylprednisolone sodium succinate : 5 mg/ml | RL | 2269 |
| | | Ceftobiprole medocartil sodium : 2 mg/ml Methylprednisolone sodium succinate : 5 mg/ml | | 2269 |
| | | Ceftobiprole medocartil sodium Metoclopramide hydrochloride | | 4650 |
| | | Ceftobiprole medocartil sodium : 2 mg/ml Metoclopramide hydrochloride : 5 mg/ml | RL | 2269 |
| | | Ceftobiprole medocartil sodium : 2 mg/ml Metoclopramide hydrochloride : 5 mg/ml | | 2269 |
| | | Ceftobiprole medocartil sodium : 2 mg/ml Metoprolol tartrate : 1 mg/ml | RL | 2269 |
| | | Ceftobiprole medocartil sodium : 2 mg/ml Metoprolol tartrate : 1 mg/ml | | 2269 |
| | | Ceftobiprole medocartil sodium : 2 mg/ml Metronidazole : 5 mg/ml | RL | 2269 |
| | | Ceftobiprole medocartil sodium : 2 mg/ml Metronidazole : 5 mg/ml | | 2269 |
| | | Ceftobiprole medocartil sodium Midazolam hydrochloride | | 4650 |
| | | Ceftobiprole medocartil sodium : 2 mg/ml Midazolam hydrochloride : 2 mg/ml | RL | 2269 |
| | | Ceftobiprole medocartil sodium : 2 mg/ml Midazolam hydrochloride : 2 mg/ml | | 2269 |
| | | Ceftobiprole medocartil sodium Milrinone lactate | | 4650 |
| | | Ceftobiprole medocartil sodium : 2 mg/ml Milrinone lactate : 0.2 mg/ml | | 2269 |
| | | Ceftobiprole medocartil sodium : 2 mg/ml Milrinone lactate : 0.2 mg/ml | RL | 2269 |
| | | Ceftobiprole medocartil sodium : 2 mg/ml Milrinone lactate : 0.2 mg/ml | | 2269 |
| | | Ceftobiprole medocartil sodium : 2 mg/ml Morphine sulfate : 15 mg/ml | RL | 2269 |
| | | Ceftobiprole medocartil sodium : 2 mg/ml Morphine sulfate : 15 mg/ml | | 2269 |
| | | Ceftobiprole medocartil sodium Morphine sulfate | | 4650 |
| | | Ceftobiprole medocartil sodium : 2 mg/ml Moxifloxacin : 1.6 mg/ml | | 2269 |
| | | Ceftobiprole medocartil sodium Moxifloxacin | | 4650 |
| | | Ceftobiprole medocartil sodium : 2 mg/ml Moxifloxacin : 1.6 mg/ml | RL | 2269 |
| | | Ceftobiprole medocartil sodium : 2 mg/ml Norepinephrine bitartrate : 0.128 mg/ml | RL | 2269 |

| | | | | |
|--|--|---|----|------|
| | | Ceftobiprole medocartil sodium : 2 mg/ml Norepinephrine bitartrate : 0.128 mg/ml | | 2269 |
| | | Ceftobiprole medocartil sodium : 2 mg/ml Ondansetron hydrochloride : 1 mg/ml | | 2269 |
| | | Ceftobiprole medocartil sodium Ondansetron hydrochloride | | 4650 |
| | | Ceftobiprole medocartil sodium : 2 mg/ml Ondansetron hydrochloride : 1 mg/ml | RL | 2269 |
| | | Ceftobiprole medocartil sodium : 2 mg/ml Pantoprazole sodium : 0.4 mg/ml | RL | 2269 |
| | | Ceftobiprole medocartil sodium : 2 mg/ml Pantoprazole sodium : 0.4 mg/ml | | 2269 |
| | | Ceftobiprole medocartil sodium : 2 mg/ml Pantoprazole sodium : 0.4 mg/ml | | 2269 |
| | | Ceftobiprole medocartil sodium Pantoprazole sodium | | 4650 |
| | | Ceftobiprole medocartil sodium : 2 mg/ml Pethidine hydrochloride : 10 mg/ml | RL | 2269 |
| | | Ceftobiprole medocartil sodium Pethidine hydrochloride | | 4650 |
| | | Ceftobiprole medocartil sodium : 2 mg/ml Pethidine hydrochloride : 10 mg/ml | | 2269 |
| | | Ceftobiprole medocartil sodium : 2 mg/ml Potassium chloride : 100 mEq/l | RL | 2269 |
| | | Ceftobiprole medocartil sodium : 2 mg/ml Potassium chloride : 100 mEq/l | | 2269 |
| | | Ceftobiprole medocartil sodium : 2 mg/ml Potassium phosphate : 0.5 mmol/ml | RL | 2269 |
| | | Ceftobiprole medocartil sodium : 2 mg/ml Potassium phosphate : 0.5 mmol/ml | | 2269 |
| | | Ceftobiprole medocartil sodium Potassium phosphate | | 4650 |
| | | Ceftobiprole medocartil sodium : 2 mg/ml Promethazine hydrochloride : 2 mg/ml | RL | 2269 |
| | | Ceftobiprole medocartil sodium Promethazine hydrochloride | | 4650 |
| | | Ceftobiprole medocartil sodium : 2 mg/ml Promethazine hydrochloride : 2 mg/ml | | 2269 |
| | | Ceftobiprole medocartil sodium : 2 mg/ml Propofol : 10 mg/ml | | 2269 |
| | | Ceftobiprole medocartil sodium : 2 mg/ml Propofol : 10 mg/ml | RL | 2269 |
| | | Ceftobiprole medocartil sodium : 2 mg/ml Ranitidine hydrochloride : 2 mg/ml | RL | 2269 |
| | | Ceftobiprole medocartil sodium : 2 mg/ml Ranitidine hydrochloride : 2 mg/ml | | 2269 |
| | | Ceftobiprole medocartil sodium : 2 mg/ml Remifentanil hydrochloride : 250 µg/ml | | 2269 |
| | | Ceftobiprole medocartil sodium Remifentanil hydrochloride | | 4650 |
| | | Ceftobiprole medocartil sodium : 2 mg/ml Remifentanil hydrochloride : 250 µg/ml | RL | 2269 |

| | | | |
|--|---|---|---------|
| | Ceftobiprole medocaril sodium : 2 mg/ml Sodium bicarbonate : 84 mg/ml | RL | 2269 |
| | Ceftobiprole medocaril sodium : 2 mg/ml Sodium bicarbonate : 84 mg/ml | | 2269 |
| | | Ceftobiprole medocaril sodium : 2 mg/ml Sodium Phosphate : 0.5 mmol/ml | RL 2269 |
| | Ceftobiprole medocaril sodium Sodium Phosphate | | 4650 |
| | Ceftobiprole medocaril sodium : 2 mg/ml Sodium Phosphate : 0.5 mmol/ml | | 2269 |
| | Ceftobiprole medocaril sodium Tobramycin sulfate | | 4650 |
| | | Ceftobiprole medocaril sodium : 2 mg/ml Tobramycin sulfate : 5 mg/ml | 2269 |
| | | Ceftobiprole medocaril sodium : 2 mg/ml Tobramycin sulfate : 5 mg/ml | RL 2269 |
| | Ceftobiprole medocaril sodium : 2 mg/ml Vasopressin : 1 UI/ml | | 2269 |
| | Ceftobiprole medocaril sodium : 2 mg/ml Vasopressin : 1 UI/ml | RL | 2269 |
| | Ceftobiprole medocaril sodium : 2 mg/ml Voriconazole : 4 mg/ml | | 2269 |
| | Ceftobiprole medocaril sodium : 2 mg/ml Voriconazole : 4 mg/ml | RL | 2269 |



Voie d'administration



Bibliographie

| | Type | Source |
|------|-------------|---|
| 2269 | Revue | Chan P, Bishop A, Kupiec TC, Trissel LA, Gole D, Jimidar IM, Vermeersch H. Compatibility of ceftobiprole medocaril with selected drugs during simulated Y-site administration. Am J Health-Syst Pharm 2008 ; 65, 16: 1545-1551. |
| 3520 | Laboratoire | Cidomycin - Summary of product Characteristics. Sanofi 2011 |
| 3549 | Laboratoire | Amikacine B Braun - Résumé des caractéristiques du produit. B Braun 2012 |
| 3643 | Laboratoire | Gentamicin sulphate (Cidomycin®) - Summary of Product Characteristics Sanofi 2015 |
| 3674 | Laboratoire | Erythromycin lactobionate - Summary of Product Characteristics PanPharma 2016 |
| 4650 | Laboratoire | Ceftobiprole (Zevtera 500 mg powder for concentrate for solution for infusion.) Summary of Product Characteristics, Advanz Pharma updated 4 aug 2021. Advanz Pharma 2021 |



Dictionnaire

| | |
|---|---|
|  Antibiotique |  Injectable |
|  Noms commerciaux |  Stabilité des solutions |
|  Contenant |  Molécule |
|  Concentration |  Température |
|  Conservation |  Durée de stabilité |
|  Biosimilaire |  Données conflictuelles |
|  Bibliographie |  Verre |
|  Eau pour préparation injectable |  Non précisée |
|  Heure |  Chlorure de sodium 0,9% |
|  A l'abri de la lumière |  Jour |
|  Lumière |  Glucose 5% |
| RL Ringer lactate |  Polyvinyl chlorure |
|  Polyéthylène |  Facteur influençant la stabilité |
|  Provoque |  Dégradation |
|  Compatibilités |  Molécule |
|  Solvant |  Précipitation immédiate |
|  Incompatible |  Incompatibilité non précisée |
|  Compatible |  NaCl 0,9% ou glucose 5% |
|  Instabilité chimique |  Turbidité immédiate |
|  Précipitation en 4 heures |  Voie d'administration |
|  Perfusion intraveineuse |  Bibliographie |
|  Dictionnaire | |