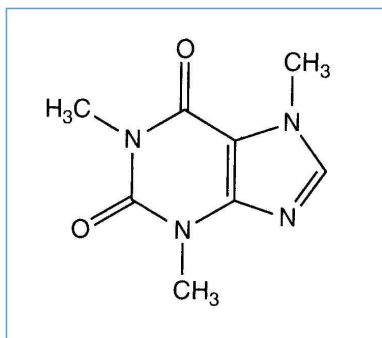


Stabilis



Caffeine citrate



Obchodný názov

Cafcit	Spojené štáty Americké
Cafeina 25% Bioquim	Argentína
Cafeina citrato	Čile, Španielsko
Cafeina Larjan	Argentína
Cafeine citrate Biomed	nový Zéland
Cafeine citrate Martindale	Veľká Británia
Cafeine Sterop	Belgicko
Cafeinova	Kolumbia
Caffeinospire	Egypt
Cafirate	India
Cafnea	peru
Citrate de caféine Cooper	Francúzsko



Stabilita roztokov

		10 mg/ml	22°C		342			318
		10 mg/ml	4°C		342			318
		5 mg/ml	27°C		24			691
		5 mg/ml	27°C		24			691
		10 mg/ml	22°C		180			43









Kompatibilita

	Caffeine citrate : 20 mg/ml Amoxicillin sodium : 100 mg/ml		4837
	Caffeine citrate Calcium gluconate		3644

	Caffeine citrate : 10 mg/ml	RL	4603
	Caffeine citrate		691
		Caffeine citrate : 20 mg/ml Aciclovir sodium : 5 mg/ml	4837
	Caffeine citrate : 20 mg/ml Alprostadil : 20 µg/ml		4837
	Caffeine citrate : 20 mg/ml Amphotericin B : 0,1 mg/ml		4837
		Caffeine citrate : 20 mg/ml Amphotericin B liposomale : 2 mg/ml	4837
	Caffeine citrate : 20 mg/ml Ampicillin sodium : 100 mg/ml		4837
	Caffeine citrate : 25 mg/ml Blinatumomab : 0.125 & 0.375 µg/ml		3976
	Caffeine citrate : 20 mg/ml Calcium gluconate : 100 mg/ml		4837
	Caffeine citrate : 20 mg/ml Cefotaxime sodium : 100 mg/ml		4837
	Caffeine citrate : 20 mg/ml Ciprofloxacin lactate : 2 mg/ml		4837
	Caffeine citrate : 20 mg/ml Clonidine hydrochloride : 0,002 mg/ml		4837
	Caffeine citrate		691
	Caffeine citrate : 20 mg/ml Cloxacillin sodium : 100 mg/ml		4837
	Caffeine citrate : 10 mg/ml Dexmedetomidine : 100 µg/ml		4389
	Caffeine citrate : 20 mg/ml Dexmedetomidine : 1 µg/ml		4837
	Caffeine citrate Dimenhydrinate		2087
	Caffeine citrate : 20 mg/ml Dobutamine hydrochloride : 7,2 mg/ml		4837
	Caffeine citrate : 20 mg/ml Dobutamine hydrochloride : 7,2 mg/ml		4837
	Caffeine citrate : 20 mg/ml Dopamine hydrochloride : 7,2 mg/ml		4837
	Caffeine citrate : 20 mg/ml Dopamine hydrochloride : 7,2 mg/ml		4837
	Caffeine citrate : 20 mg/ml Doxapram hydrochloride : 2 mg/ml		1802
	Caffeine citrate : 20 mg/ml Epinephrine hydrochloride : 64 µg/ml		4837
	Caffeine citrate : 20 mg/ml Fentanyl citrate : 50 µg/ml		4837
	Caffeine citrate : 20 mg/ml Flucloxacillin sodium : 50 mg/ml		4837
	Caffeine citrate : 20 mg/ml Fluconazole : 2 mg/ml		4837
	Caffeine citrate : 20 mg/ml Gentamicin sulfate : 10 mg/ml		4837

		Caffeine citrate : 20 mg/ml Heparin sodium : 100 UI/ml		4837
		Caffeine citrate : 20 mg/ml Hydrocortisone sodium succinate : 10 mg/ml		4837
		Caffeine citrate : 20 mg/ml Hydrocortisone sodium succinate : 1 mg/ml		4837
		Caffeine citrate : 20 mg/ml Ibuprofen lysinate : 10 mg/ml		4419
		Caffeine citrate : 20 mg/ml Ibuprofen lysinate : 4 mg/ml		4837
		Caffeine citrate : 20 mg/ml Indomethacin sodium trihydrate : 0,2 mg/ml		4837
		Caffeine citrate : 20 mg/ml Insulin : 0,2 UI/ml		4837
		Caffeine citrate : 20 mg/ml Levetiracetam : 5 mg/ml		4837
		Caffeine citrate : 20 mg/ml Linezolid : 2 mg/ml		4837
		Caffeine citrate : 20 mg/ml Meropenem : 50 mg/ml		4837
		Caffeine citrate : 20 mg/ml Meropenem : 50 mg/ml		4319
		Caffeine citrate : 20 mg/ml Metronidazole : 5 mg/ml		4837
		Caffeine citrate : 20 mg/ml Midazolam hydrochloride : 1 mg/ml		4837
		Caffeine citrate : 20 mg/ml Milrinone lactate : 0,4 mg/ml		4837
		Caffeine citrate : 20 mg/ml Morphine hydrochloride : 0,2 mg/ml		4837
		Caffeine citrate : 20 mg/ml Morphine sulfate : 0,2 mg/ml		4837
		Caffeine citrate : 20 mg/ml Norepinephrine bitartrate : 0,064 mg/ml		4837
		Caffeine citrate : 20 mg/ml Paracetamol : 10 mg/ml		4742
		Caffeine citrate : 20 mg/ml Paracetamol : 10 mg/ml		4837
		Caffeine citrate : 20 mg/ml Penicillin G sodium : 0.17 MUI/ml		4837
		Caffeine citrate : 20 mg/ml Pentoxifyllin : 5 mg/ml		4543
		Caffeine citrate : 20 mg/ml Phenobarbital sodium : 20 mg/ml		4837
		Caffeine citrate : 20 mg/ml Piperacillin sodium / tazobactam : 200 mg/ml		4837
		Caffeine citrate : 20 mg/ml Rifampicin : 6 mg/ml		4837
		Caffeine citrate : 20 mg/ml Sildenafil citrate : 0,6 mg/ml		4845
		Caffeine citrate : 20 mg/ml Sodium bicarbonate		3379

	Caffeine citrate : 20 mg/ml Sodium bicarbonate : 42 mg/ml		4837
	Caffeine citrate : 20 mg/ml Vancomycin hydrochloride : 10 mg/ml		4837
	Caffeine citrate : 20 mg/ml Vecuronium bromide : 1 mg/ml		4837



spôsob podania



Odkazy na literatúru

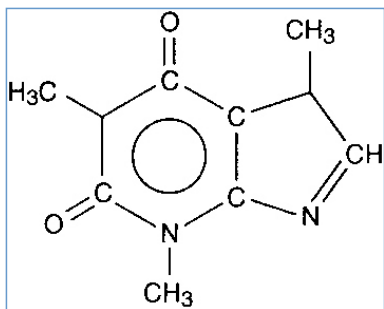
	Typ	Publikácia
43	Časopis	Fraser BD, Berod T, Whitney HAK. Stability of caffeine citrate injection in polypropylene syringes at room temperature. Am J Health-Syst Pharm 1997 ; 54: 1106-1108.
318	Časopis	Donnelly RF, Tirona RG. Stability of citrated caffeine injectable solution in glass vials. Am J Hosp Pharm 1994 ; 51: 512-514.
691	Časopis	Nahata MC, Zingarelli JR, Durell DE. Stability of caffeine citrate injection in intravenous admixtures and parenteral nutrition solutions. J Clin Pharm Ther 1989 ; 14: 53-55.
1802	Časopis	Bell MS, Nolt DH. Visual compatibility of doxapram hydrochloride with drugs commonly administered via a Y-site in the intensive care nursery. Am J Health-Syst Pharm 2003 ; 60: 193-194.
2087	Časopis	Ferreira E, Forest JM, Hildgen P. Compatibility of dimenhydrinate injectable by Y administration. Pharmactuel 2004 ; 37: 17-20.
3379	Časopis	Fox L.M, Wilder A.G, Foushee J.A. Physical compatibility of various drugs with neonatal total parenteral nutrient solution during simulated Y-site administration. Am J Health-Syst Pharm 2013 ;70:520-524.
3644	Laboratórium	Calcium gluconate® - Summary of Product Characteristics Hameln Pharmaceuticals 2010
3976	Časopis	Du Repaire T, Vigne P, Guedon A, Gauthier-Villano L, Bertault Peres P, Pourroy B. Visual compatibility of blinatumomab with selected co-administrated drugs during simulated Y-site administration. Am J Health-Syst Pharm 2017 ; 74,16 : 1217-1218
4319	Časopis	Lessard J-J, Caron E, Schérier H, Forest J-M, Leclair G. Compatibility of Y-site Injection of Meropenem Trihydrate With 101 Other Injectable Drugs. Hosp Pharm 2020 ; 55, 5: 332-337.
4389	Časopis	Côté K, Correal F, Metras M.E, Friciu M, Forest J.M, Leclair G. Compatibilité physique des médicaments administrés en Y aux soins intensifs, en particulier la dexmédétomidine, le lévosiimendan et la kétamine. Pharmactuel 2019 ;52,4:206-213

4419	Časopis	Holt R.J, Siegert S.W.K, Krishna A. Physical Compatibility of Ibuprofen Lysine Injection with Selected Drugs During Simulated Y-site Injection. J Pediatr Pharmacol Ther 2008 ; 13, 3: 155-161.
4543	Časopis	Senarathna G, Strunk T, Petrovski M, Batty K. Physical compatibility of pentoxifylline and intravenous medications. Archives of Disease in Childhood 2018 ;104:292–295.
4603	Časopis	Vallée M, Barthélémy I, Friciu M, Pelletier E, Forest J.M, Benoit F, Leclair G. Compatibility of Lactated Ringer’s Injection With 94 Selected Intravenous Drugs During Simulated Y-site Administration. Hosp Pharm 2021 ; 56, 4: 228-234.
4742	Časopis	Macoviciuc M, Nguyen C, Forest J-M, Leclair G. Compatibilité physique de l’acétaminophène injectable avec 102 autres médicaments lors d’une administration en Y. Pharmactuel 2022 ; 55, 4: 247-255.
4837	Časopis	De Silva, D.T.N Petrovski M, Strunk T, Mukadam N, Page Sharp N, Moore B.R, Batty K.T. Physicochemical compatibility of caffeine citrate and caffeine base injections with parenteral medications used in neonatal intensive care settings. Eur J Clin Pharmacol 2024 ; 80:1079–1087.
4845	Časopis	De Silva D.T.N, Strunk T, Petrovski M, Page-Sharp M, Moore B.R, Batty K.T. The Physicochemical Compatibility of Sildenafil Injection with Parenteral Medications Used in Neonatal Intensive Care Settings. Pharmaceutics 2024 ;1 6, 419.

Stabilis



Caffeine citrate



Stabilita farmaceutických prípravkov

		1000 mg Caffeine citrate	Káliumsorbát 100 mg Trinátriumcitrát 1000 mg Čistená voda >> 100 ml	25°C		365		2705
		1000 mg Caffeine citrate	Káliumsorbát 100 mg Trinátriumcitrát 1000 mg Čistená voda >> 100 ml	5°C		365		2705



Odkazy na literatúru

	Typ	Publikácia
2705	Časopis	Barnes AR, Hebron BS, Smith J. Stability of caffeine oral formulations for neonatal use. J Clin Pharm Ther 1994 ; 19, 6: 391-396.



slovník

 stimulans dychu	 Injekcia
 Obchodný názov	 Stabilita roztokov
 obal	 Zlúčenina
 koncentrácia	 teplota
 uchovávanie	 Trvanie stability
 Biologicky podobný liek	 konfliktné údaje
 odkazy na lieteratúru	 Sklo
 voda na injekciu	 Chránené pred svetlom
 dní	 5% glukóza
 Za svetla	 hodín
 10% glukóza	 Injekčná striekačka polypropylén
 Žiadny	 Kompatibility
 Zlúčenina	 rozpúšťadlo
 kompatibilný	 Nešpecifikovaná nekompatibilita
 nezlučiteľný	RL Ringerov laktátový roztok
 Okamžité zrážanie	 0,9% chlorid sodný
 Okamžitá zákal	 parenterálna výživa (binárna zmes)
 spôsob podania	 intravenózne
 Odkazy na literatúru	 Perorálny roztok
 Stabilita farmaceutických prípravkov	 Pôvod
 Pomocná látka	 Prášok
 slovník	