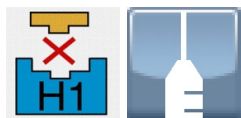
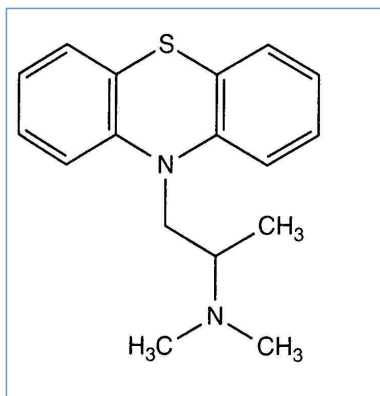


Stabilis



Promethazine hydrochloride



Noms commerciaux

Atosil	Allemagne
Chemoprozin	Iran
Diphergan	Pologne
Farganesse	Italie
Fenergan	Argentine, Brésil, Portugal
Frinova	Espagne
Phenergan	Australie, Belgique, Etats Unis d'Amérique, France, Grande Bretagne, Iran, Irlande, Luxembourg, Maroc, Pays bas
Pipolphen	Hongrie
Promethazin	Allemagne
Promethazina	Argentine
Promethazine	Australie, Canada, Etats Unis d'Amérique, Grande Bretagne, Iran, Irlande, Malaisie, Pays bas
Promethazine hydrochloride	Malaisie, Nouvelle Zélande
Protazin	Allemagne
Titanox	Grèce



Stabilité des solutions

Container	Stability	Concentration	Temp	Light	Time	Check	Warning	Info
	Green triangle	0,095 mg/ml	21°C	Red X	24	✓		350
PVC	Green triangle	0,095 mg/ml	21°C	Red X	24	✓		350
PE	Green triangle	0,095 mg/ml	21°C	Red X	24	✓		350



Stabilité en mélange

Container	Stability	Concentration	Temp	Light	Mixture	Time	Check	Info
	Red diamond	1 mg/ml	25°C	?	Palonosetron hydrochloride : 25 µg/ml	4	✓	2179
PP	Red circle with slash	12,5 & 25 mg/ml	25°C	Red X	Dihydroergotamine mesilate : 0,5 mg/ml	24	✓	1069



Facteur influençant la stabilité

				301
--	--	--	--	-----



Compatibilités

		Promethazine hydrochloride : 25 mg/ml Aldesleukin : 0.0338 MUI/ml	36
		Promethazine hydrochloride : 2 mg/ml Allopurinol sodium : 3 mg/ml	307
		Promethazine hydrochloride : 2 mg/ml Amifostine : 10 mg/ml	3
		Promethazine hydrochloride : 2 mg/ml Amphotericin B cholesteryl sulfate complex : 0,83 mg/ml	921
		Promethazine hydrochloride : 2 mg/ml Amsacrine : 1 mg/ml	253
		Promethazine hydrochloride : 2 mg/ml Aztreonam : 40 mg/ml	99
		Promethazine hydrochloride : 2 mg/ml Bivalirudin : 5 mg/ml	1713
		Promethazine hydrochloride : 25 mg/ml Bivalirudin	3539
		Promethazine hydrochloride : 2 mg/ml Bivalirudin	3539
		Promethazine hydrochloride : 25 mg/ml Caffeine : 10 mg/ml	3964
		Promethazine hydrochloride : 25 mg/ml Cefazolin sodium : 10 mg/ml	103
		Promethazine hydrochloride : 50 mg/ml Cefmetazole sodium : 100 mg/ml	93
		Promethazine hydrochloride Cefoperazone sodium	106
		Promethazine hydrochloride Cefoperazone sodium	1739
		Promethazine hydrochloride : 2 mg/ml Ceftaroline fosamil : 2,22 mg/ml	3249
		Promethazine hydrochloride : 2 mg/ml Ceftaroline fosamil : 2,22 mg/ml	3249
		Promethazine hydrochloride : 25 mg/ml Ceftizoxime sodium : 10 mg/ml	103
		Promethazine hydrochloride : 2 mg/ml Ceftobiprole medocaril sodium : 2 mg/ml	2269
		Promethazine hydrochloride : 2 mg/ml Ceftobiprole medocaril sodium : 2 mg/ml	2269

		Promethazine hydrochloride Ceftobiprole medocartil sodium		4650
		Promethazine hydrochloride : 25 mg/ml Chloroquine phosphate : 50 mg/ml	∅	124
		Promethazine hydrochloride : 25 mg/ml Cimetidine hydrochloride : 150 mg/ml		1438
		Promethazine hydrochloride : 25 mg/ml Ciprofloxacin lactate : 2 mg/ml		288
		Promethazine hydrochloride : 2 mg/ml Cisatracurium besylate : 0.1 >> 5 mg/ml		299
		Promethazine hydrochloride : 2 mg/ml Cladribine : 0.5 mg/ml		1496
		Promethazine hydrochloride : 2 mg/ml Cladribine : 0.015 mg/ml		1496
		Promethazine hydrochloride : 25 mg/ml Cloxacillin sodium : 100 mg/ml		3012
		Promethazine hydrochloride : 2 mg/ml Dexmedetomidine : 4 µg/ml		1712
		Promethazine hydrochloride : 12,5 & 25 mg/ml Dihydroergotamine mesilate : 0,5 mg/ml	∅	1069
		Promethazine hydrochloride Dimenhydrinate		2087
		Promethazine hydrochloride : 2 mg/ml Docetaxel : 0.9 mg/ml		1754
		Promethazine hydrochloride : 2 mg/ml Doxorubicin hydrochloride liposome peg : 0.4 mg/ml		251
		Promethazine hydrochloride Erythromycin lactobionate		3674
		Promethazine hydrochloride : 2 mg/ml Etoposide phosphate : 5 mg/ml		1410
		Promethazine hydrochloride : 2 mg/ml Fenoldopam mesylate : 80 µg/ml		1803
		Promethazine hydrochloride : 2 mg/ml Filgrastim : 30 µg/ml		244
		Promethazine hydrochloride : 5 mg/ml Flucloxacillin sodium : 20 mg/ml		1232
		Promethazine hydrochloride : 50 mg/ml Fluconazole : 2 mg/ml		496
		Promethazine hydrochloride : 2 mg/ml Fludarabine phosphate : 1 mg/ml		492
		Promethazine hydrochloride : 50 mg/ml Foscarnet sodium : 24 mg/ml	∅	73
		Promethazine hydrochloride : 5 mg/ml Furosemide : 1 mg/ml		1232
		Promethazine hydrochloride : 2 mg/ml Gemcitabine hydrochloride : 10 mg/ml		1423
		Promethazine hydrochloride Glycopyrronium bromide		3599
		Promethazine hydrochloride : 2 mg/ml Granisetron hydrochloride : 0.05 mg/ml		182
		Promethazine hydrochloride : 50 mg/ml Heparin sodium : 1 UI/ml	RL	1228

		Promethazine hydrochloride : 50 mg/ml Heparin sodium : 1 UI/ml		1228
		Promethazine hydrochloride Heparin sodium		3540
		Promethazine hydrochloride : 2 mg/ml Hetastarch : 60 mg/ml		1721
		Promethazine hydrochloride : 50 mg/ml Hydrocortisone sodium succinate : 1 mg/ml	RL	1228
		Promethazine hydrochloride : 2 mg/ml		1415
		Promethazine hydrochloride : 50 mg/ml Hydrocortisone sodium succinate : 1 mg/ml		1228
		Promethazine hydrochloride : 25 mg/ml Ketamine hydrochloride : 50 mg/ml		2109
		Promethazine hydrochloride : 25 mg/ml Ketorolac tromethamine : 30 mg/ml	∅	476
		Promethazine hydrochloride Ketorolac tromethamine		3593
		Promethazine hydrochloride : 2 mg/ml Lansoprazole : 0.55 mg/ml		1625
		Promethazine hydrochloride : 2 mg/ml Linezolid : 2 mg/ml	∅	1925
		Promethazine hydrochloride : 2 mg/ml Melphalan : 0.1 mg/ml		169
		Promethazine hydrochloride : 12.5 mg/ml Midazolam hydrochloride : 2.5 mg/ml	∅	404
		Promethazine hydrochloride : 2 mg/ml		301
		Promethazine hydrochloride : 0.3 mg/ml Hydromorphone hydrochloride : 1 mg/ml		795
		Promethazine hydrochloride Methotrexate sodium		3637
		Promethazine hydrochloride Morphine sulfate		3531
		Promethazine hydrochloride : 25 mg/ml Nalbuphine hydrochloride : 10 mg/ml		518
		Promethazine hydrochloride : 12,5 & 25 mg/ml Nalbuphine hydrochloride : 5 & 10 mg/ml		616
		Promethazine hydrochloride Nalbuphine hydrochloride		3672
		Promethazine hydrochloride : 25 mg/ml Naloxone hydrochloride : 0.4 mg/ml	∅	3408
		Promethazine hydrochloride : 0.1 mg/ml Netilmicin sulfate : 3 mg/ml		1200
		Promethazine hydrochloride : 2 mg/ml Ondansetron hydrochloride : 1 mg/ml		334
		Promethazine hydrochloride : 2 mg/ml Oxaliplatin : 0,5 mg/ml		1662
		Promethazine hydrochloride : 2 mg/ml Palonosetron hydrochloride : 50 µg/ml	∅	2179
		Promethazine hydrochloride : 2 mg/ml Pemetrexed disodium : 20 mg/ml		1953
		Promethazine hydrochloride Penicillin G sodium		3585

		Promethazine hydrochloride : 2 mg/ml Piperacillin sodium / tazobactam : 40/5 mg/ml		81
		Promethazine hydrochloride : 50 mg/ml Potassium chloride : 40 mEq/l	RL	1228
		Promethazine hydrochloride : 50 mg/ml Potassium chloride : 40 mEq/l		1228
		Promethazine hydrochloride : 25 mg/ml Ranitidine hydrochloride : 25 mg/ml		58
		Promethazine hydrochloride : 25 mg/ml Salbutamol sulfate : 1 mg/ml		3216
		Promethazine hydrochloride : 2 mg/ml Sargramostim : 10 µg/ml		335
		Promethazine hydrochloride : 2 mg/ml Teniposide : 0.1 mg/ml		905
		Promethazine hydrochloride : 25 mg/ml Thiopental sodium : 25 mg/ml		3767
		Promethazine hydrochloride Thiopental sodium		3675
		Promethazine hydrochloride : 2 mg/ml Thiotepa : 1 mg/ml		249
		Promethazine hydrochloride : 2 mg/ml Vinorelbine tartrate : 1 mg/ml		84



Voie d'administration



Bibliographie

	Type	Source
3	Revue	Trissel LA, Martinez JF. Compatibility of amifostine with selected drugs during simulated Y-site administration. Am J Health-Syst Pharm 1995 ; 52: 2208-2212.
36	Revue	Alex S, Gupta SL, Minor JR, Turcovski-Corrales S, Gallelli JF, Taub D, Piscitelli SC. Compatibility and activity of aldesleukin (recombinant interleukin-2) in presence of selected drugs during simulated Y-site administration: Evaluation of three methods. Am J Health-Syst Pharm 1995 ; 52: 2423-2426.
58	Revue	Parker WA. Physical compatibility of ranitidine HCl with preoperative injectable medications. Can J Hosp Pharm 1985 ; 38: 160-161.
73	Revue	Lor E, Takagi J. Visual compatibility of foscarnet with other injectable drugs. Am J Hosp Pharm 1990 ; 47: 157-159.
81	Revue	Trissel LA, Martinez JF. Compatibility of piperacillin sodium plus tazobactam with selected drugs during simulated Y-site injection. Am J Hosp Pharm 1994 ; 51: 672-678.

84	Revue	Trissel LA, Martinez JF. Visual, turbidimetric, and particle-content assessment of compatibility of vinorelbine tartrate with selected drugs during simulated Y-site injection. Am J Hosp Pharm 1994 ; 51: 495-499.
93	Revue	Hutchings SR, Rusho WJ, Tyler LS. Compatibility of cefmetazole sodium with commonly used drugs during Y-site delivery. Am J Health-Syst Pharm 1996 ; 53: 2185-2188.
99	Revue	Trissel LA, Martinez JF. Compatibility of aztreonam with selected drugs during simulated Y-site administration. Am J Health-Syst Pharm 1995 ; 52: 1086-1090.
103	Revue	Erickson SH, Ulici D. Incompatibility of cefotetan disodium and promethazine hydrochloride. Am J Health-Syst Pharm 1995 ; 52: 1347.
106	Revue	Scott SM. Incompatibility of cefoperazone and promethazine. Am J Hosp Pharm 1990 ; 47: 519.
124	Revue	Abubakar AA, Mustapha A, Wambebe OC. An in vitro interaction between promethazine hydrochloride and chloroquine phosphate. Int Pharm J 1993 ; 7: 14-19.
169	Revue	Trissel LA, Martinez JF. Physical compatibility of melphalan with selected drugs during simulated Y-site administration. Am J Hosp Pharm 1993 ; 50: 2359-2363.
182	Revue	Trissel LA, Gilbert DL, Martinez JF. Compatibility of granisetron hydrochloride with selected drugs during simulated Y-site administration. Am J Health-Syst Pharm 1997 ; 54: 56-60.
244	Revue	Trissel LA, Martinez JF. Compatibility of filgrastim with selected drugs during simulated Y-site administration. Am J Hosp Pharm 1994 ; 51: 1907-1913.
249	Revue	Trissel LA, Martinez JF. Compatibility of thiotepa (lyophilized) with selected drugs during simulated Y-site administration. Am J Health-Syst Pharm 1996 ; 53: 1041-1045.
251	Revue	Trissel LA, Gilbert DL, Martinez JF. Compatibility of doxorubicin hydrochloride liposome injection with selected other drugs during simulated Y-site administration. Am J Health-Syst Pharm 1997 ; 54: 2708-2713.
253	Revue	Trissel LA, Chandler SW, Folstad JT. Visual compatibility of amsacrine with selected drugs during simulated Y-site injection. Am J Hosp Pharm 1990 ; 47: 2525-2528.
288	Revue	Cervenka P, Dejong DJ, Butler BL, Monzingo MD. Visual compatibility of injectable ciprofloxacin lactate with selected injectable drugs during simulated Y-site administration. Hosp Pharm 1992 ; 27: 957-958,961-962.
299	Revue	Trissel LA, Martinez JF, Gilbert DL. Compatibility of cisatracurium besylate with selected drugs during simulated Y-site administration. Am J Health-Syst Pharm 1997 ; 54: 1735-1741.
301	Revue	Trissel LA, Gilbert DL, Martinez JF, Baker MB, Walter WV, Mirtallo JM. Compatibility of parenteral nutrient solutions with selected drugs during simulated Y-site administration. Am J Health-Syst Pharm 1997 ; 54: 1295-1300.
307	Revue	Trissel LA, Martinez JF. Compatibility of allopurinol sodium with selected drugs during simulated Y-site administration. Am J Hosp Pharm 1994 ; 51: 1792-1799.

334	Revue	Trissel LA, Tramonte SM, Grilley BJ. Visual compatibility of ondansetron hydrochloride with selected drugs during simulated Y-site injection. Am J Hosp Pharm 1991 ; 48: 988-992.
335	Revue	Trissel LA, Bready BB, Kwan JW, Santiago NM. Visual compatibility of sargramostim with selected antineoplastic agents, anti-infectives, or other drugs during simulated Y-site injection. Am J Hosp Pharm 1992 ; 49: 402-406.
350	Revue	Martens HJ, De Goede PN, Van Loenen AC. Sorption of various drugs in polyvinyl chloride, glass, and polyethylene-lined infusion containers. Am J Hosp Pharm 1990 ; 47: 369-373.
404	Revue	Forman JK, Souney PF. Visual compatibility of midazolam hydrochloride with common preoperative injectable medications. Am J Hosp Pharm 1987 ; 44: 2298-2299.
476	Revue	Knapp AJ, Mauro VF, Alexander KS. Incompatibility of ketorolac tromethamine with selected postoperative drugs. Am J Hosp Pharm 1992 ; 49: 2960-2962.
492	Revue	Trissel LA, Parks NPT, Santiago NM. Visual compatibility of fludarabine phosphate with antineoplastic drugs, anti-infectives, and other selected drugs during simulated Y-site injection. Am J Hosp Pharm 1991 ; 48: 2186-2189.
496	Revue	Lor E, Sheybani T, Takagi J. Visual compatibility of fluconazole with commonly used injectable drugs during simulated Y-site administration. Am J Hosp Pharm 1991 ; 48: 744-746.
518	Revue	Jimenez MD. Visual compatibility of nalbuphine hydrochloride and promethazine hydrochloride. Am J Hosp Pharm 1988 ; 45: 1278.
616	Revue	Jump WG, Plaza VM, Poremba A. Compatibility of nalbuphine hydrochloride with other preoperative medications. Am J Hosp Pharm 1982 ; 39: 841-843.
795	Revue	Henderson F. 21-day compatibility of hydromorphone hydrochloride and promethazine hydrochloride in a cassette. Am J Health-Syst Pharm 1996 ; 53: 2338-2339.
905	Revue	Trissel LA, Martinez JF. Screening teniposide for Y-site physical incompatibilities. Hosp Pharm 1994 ; 29: 1010-1017.
921	Revue	Trissel LA, Gilbert DL, Martinez JF. Incompatibility and compatibility of amphotericin B cholesteryl sulfate complex with selected other drugs during simulated Y-site administration. Hosp Pharm 1998 ; 33: 284-292.
1069	Revue	Peek BT, Webster KD, Da Camara CC. Stability and compatibility of promethazine hydrochloride and dihydroergotamine mesylate in combination. Am J Health-Syst Pharm 1999 ; 56: 1835-1838.
1200	Revue	Chaudry IA, Bruely KP, Hurlburt LE, Oden EM. Compatibility of netilmicin sulfate injection with commonly used intravenous injections and additives. Am J Hosp Pharm 1981 ; 38: 1737-1742.
1228	Revue	Allen LV, Stiles ML. Compatibility of various admixtures at Y-injection sites of intravenous administration sets. Part2. Am J Hosp Pharm 1981 ; 38: 380-381.
1232	Revue	Beatson C, Taylor A. A physical compatibility study of furosemide & flucloxacillin injections. Br J Pharm Pract 1987 ; 9: 223-226, 236.

1410	Revue	Trissel LA, Martinez JF, Simmons M. Compatibility of etoposide phosphate with selected drugs during simulated Y-site injection. J Am Pharm Assoc 1999 ; 39: 141-145.
1415	Revue	Trissel L.A, Gilbert D.L, Martinez J.F, Baker M.B, Walter W.V, Mirtallo J.M. Compatibility of medications with 3-in-1 parenteral nutrition admixtures. JPEN 1999 ; 23: 67-74.
1423	Revue	Trissel LA, Martinez JF, Gilbert DL. Compatibility of gemcitabine hydrochloride with 107 selected drugs during simulated Y-site injection. J Am Pharm Assoc 1999 ; 39: 514-518.
1438	Revue	Souney PF, Solomon MA, Stancher D. Visual compatibility of cimetidine hydrochloride with common preoperative injectable medications. Am J Hosp Pharm 1984 ; 41: 1840-1841.
1496	Revue	Trissel LA, Martinez JF, Gilbert DL. Screening cladribine for Y-site physical compatibility with selected drugs. Hosp Pharm 1996 ; 31: 1425-1428.
1625	Revue	Trissel LA, Saenz C, Williams YW, Ingram D. Incompatibilities of lansoprazole injection with other drugs during simulated Y-site coadministration. Int J Pharm Compound 2001 ; 5: 314-321.
1662	Revue	Trissel LA, Saenz CA, Ingram DS, Ogundele AB. Compatibility screening of oxaliplatin during simulated Y-site administration with other drugs. J Oncol Pharm Practice 2002 ; 8: 33-37.
1712	Revue	Trissel LA, Saenz CA. Compatibility screening of Precedex during simulated Y-site administration with other drugs. Int J Pharm Compound 2002 ; 6: 230-233.
1713	Revue	Trissel LA, Saenz CA. Compatibility screening of bivalirudin during simulated Y-site administration with other drugs. Int J Pharm Compound 2002 ; 6: 311-315.
1721	Revue	Trissel LA, Williams KY, Baker MB. Compatibility screening of Hextend during simulated Y-site administration with other drugs. Int J Pharm Compound 2001 ; 5: 69-72.
1739	Revue	Scott SM. Incompatibility of cefperazone and promethazine. Am J Health-Syst Pharm 1990 ; 47: 519.
1754	Revue	Trissel LA, Gilbert DL, Wolkin AC. Compatibility of docetaxel with selected drugs during simulated Y-site administration. Int J Pharm Compound 1999 ; 3: 241-244.
1803	Revue	Trissel, LA, Saenz CA, Ogundele OB, Ingram D, Baker MB. Compatibility of fenoldopam mesylate with other drugs during simulated Y-site administration. Am J Health-Syst Pharm 2003 ; 60: 80-85.
1925	Revue	Trissel LA, Williams KY, Gilbert DL. Compatibility screening of linezolid injection during simulated Y-site administration with other drugs and infusion solutions. J Am Pharm Assoc 2000 ; 40: 515-519.
1953	Revue	Trissel LA, Saenz CA, Ogundele AB, Ingram DS. Physical compatibility of pemetrexed disodium with other drugs during simulated Y-site administration. Am J Health-Syst Pharm 2004 ; 61: 2289-2293.
2087	Revue	Ferreira E, Forest JM, Hildgen P. Compatibility of dimenhydrinate injectable by Y administration. Pharmactuel 2004 ; 37: 17-20.
2109	Revue	Pelletier E, Forest JM, Hildgen P. Compatibilité de la kétamine injectable lors de l'administration en dérivé avec d'autres médicaments usuels. Pharmactuel 2006 ; 39: 71-75.

2179	Revue	Trusley C, Ben M, Kupiec TC, Trissel LA. Physical and chemical stability of palonosetron with metoclopramide and promethazine during simulated Y-site administration. Int J Pharm Compound 2007 ; 11, 1: 82-85.
2269	Revue	Chan P, Bishop A, Kupiec TC, Trissel LA, Gole D, Jimidar IM, Vermeersch H. Compatibility of ceftibiprole medocaril with selected drugs during simulated Y-site administration. Am J Health-Syst Pharm 2008 ; 65, 16: 1545-1551.
3012	Revue	Sullivan T, Forrest J.M, Leclair G. Compatibility of Cloxacillin Sodium with Selected Intravenous Drugs During Simulated Y-Site Administration Hosp Pharm 2015 ; 50, 3: 214-220.
3216	Revue	Legris ME, Valiquette ME, Lavoie A, Forest JM, Leclair G. Compatibilité physique par évaluation visuelle du salbutamol injectable lors de son administration en Y. Pharmactuel 2011 ; 44, 1 : 14-18
3249	Revue	Singh BM, Dedhiya MG, Dinunzio J, Chan P, Kupiec TC, Trissel LA, Laudano JB. Compatibility of ceftaroline fosamil for injection with selected drugs during simulated Y-site administration. Am J Health-Syst Pharm 2011 ; 68: 2163-2169.
3408	Revue	Tollec S, Touzin K, Pelletier E, Forest J.M. Evaluation visuelle de la compatibilité physique de la naloxone avec d'autres médicaments intraveineux usuels. Pharmactuel 2013 ; 46, 1 : 16-21.
3531	Laboratoire	Morphine sulphate 10 mg/mL injection BP – Summary of Product Characteristics Wockhardt 2014
3539	Laboratoire	Bivalirudin (Angiox®) - Summary of Product Characteristics. The Medecines Company 2013
3540	Laboratoire	Heparin sodium - Summary of Product Characteristics. Wockhardt 2010
3585	Laboratoire	Benzyloxyethyl penicillin sodium - Summary of Product Characteristics Genus Pharmaceuticals 2008
3593	Laboratoire	Ketorolac trometamol (Ketorolac®) - Summary of Product Characteristics Beacon Pharmaceuticals 2011
3599	Laboratoire	Glycopyrrolate Injection U.S.P. - Summary of Product Characteristics Amco Amdipharm Mercy 2013
3637	Laboratoire	Methotrexate (Methotrexate solution for injection®) - Summary of Product Characteristics Hameln Pharmaceuticals 2014
3672	Laboratoire	Nalbuphine Mylan - Résumé des caractéristiques du produit Mylan SAS 2016
3674	Laboratoire	Erythromycin lactobionate - Summary of Product Characteristics PanPharma 2016
3675	Laboratoire	Thiopental sodium - Summary of Product Characteristics Archimedes Pharma UK Ltd 2015
3767	Revue	Legris M.E, Lavoie A, Forrest J.M, Hildgen P. Compatibilité par évaluation visuelle du thiopental injectable lors de son administration en Y avec des médicaments usuels. Pharmactuel 2014 ; 47, 3 : 167-172.
3964	Revue	Audet M.A, Forest E, Friciu M, Forest J.M, Leclair G. Compatibilité du citrate de caféine injectable avec plusieurs autres médicaments. Pharmactuel 2017 ; 50,1 : 27-33.
4650	Laboratoire	Ceftibiprole (Zevtera 500 mg powder for concentrate for solution for infusion.) Summary of Product Characteristics, Advanz Pharma updated 4 aug 2021. Advanz Pharma 2021



Dictionnaire

 Antihistaminique H1	 Injectable
 Noms commerciaux	 Stabilité des solutions
 Contenant	 Molécule
 Concentration	 Température
 Conservation	 Durée de stabilité
 Biosimilaire	 Données conflictuelles
 Bibliographie	 Verre
 Chlorure de sodium 0,9%	 A l'abri de la lumière
 Heure	 Polyvinyl chlorure
 Polyéthylène	 Stabilité en mélange
 Solvant	 Molécule
 Glucose 5%	 Non précisée
 Polypropylène	 Aucun
 Facteur influençant la stabilité	 Nutrition parentérale (mélange binaire)
 Provoque	 Dégradation
 Compatibilités	 Instabilité chimique
 Incompatible	 Turbidité immédiate
 Compatible	 Précipitation immédiate
 Incompatibilité non précisée	 Eau pour préparation injectable
RL Ringer lactate	 NaCl 0,9% ou glucose 5%
 Changement de couleur	 NaCl 0,9% + bactériostatique
 Changement de couleur après 1 heure	 Dégagement gazeux
 Solvant spécifique	 Nutrition parentérale (mélange ternaire)
 Changement de couleur à 4 heures	 Voie d'administration
 Intraveineuse	 Perfusion intraveineuse
 Intramusculaire	 Sous cutanée
 Bibliographie	 Dictionnaire