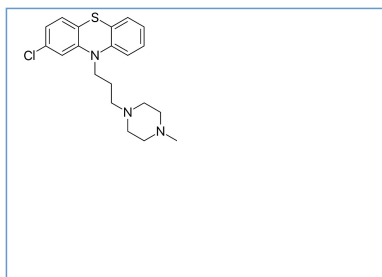


# Stabilis



## Prochlorperazine edysilate



### Stabilité des préparations

|  |  |        |  |      |  |    |  |      |
|--|--|--------|--|------|--|----|--|------|
|  |  |        |  |      |  |    |  |      |
|  |  | 250 mg | Acide citrique 5 mg<br>NaCl 0.9% 450 mg<br>Eau purifiée >> 50 mL<br>Acide chlorhydrique 0.1N<br>pH 2.5 | 22°C |  | 60 |  | 4054 |



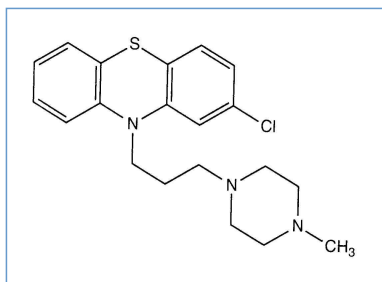
### Bibliographie

|      | Type  | Source  |
|------|-------|---|
| 4054 | Revue | Yellepeddi V.<br>Stability of extemporaneously prepared preservative-free prochlorperazine nasal spray.<br>Am J Health-Syst Pharm 2018 , 75, 1: 28-35 |

# Stabilis



## Prochlorperazine edysilate



Noms commerciaux

|                            |                 |
|----------------------------|-----------------|
| Prochlorperazine injection | Grande Bretagne |
| Stemetil                   | Grande Bretagne |



### Stabilité en mélange

|   |  |             |           |  |                         |   |  |      |
|---|--|-------------|-----------|--|-------------------------|---|--|------|
|   |  |             |           |  |                         |   |  |      |
| ? |  | 0,096 mg/ml | 20°C-23°C |  | Topotecan : 0,028 mg/ml | 4 |  | 1026 |











### Compatibilités

|  |  | Prochlorperazine edysilate : 0.5 mg/ml<br>Allopurinol sodium : 3 mg/ml                            |  | 307  |
|--|--|---|--|------|
|  |  | Prochlorperazine edysilate : 0.5 mg/ml<br>Amifostine : 10 mg/ml                                   |  | 3    |
|  |  | Prochlorperazine edysilate : 0.5 mg/ml  |  | 301  |
|  |  | Prochlorperazine edysilate : 0.5 mg/ml  |  | 1415 |
|  |  | Prochlorperazine edysilate : 5 mg/ml<br>Aldesleukin : 0.0338 MUI/ml                               |  | 36   |
|  |  | Prochlorperazine edysilate : 0.5 mg/ml<br>Amphotericin B cholesteryl sulfate complex : 0.83 mg/ml |  | 921  |
|  |  | Prochlorperazine edysilate : 0.5 mg/ml<br>Amsacrine : 1 mg/ml                                     |  | 253  |
|  |  | Prochlorperazine edysilate : 0.5 mg/ml<br>Aztreonam : 40 mg/ml                                    |  | 99   |

|  |  |  |    |      |
|--|--|--|----|------|
|  |  | Prochlorperazine edysilate : 25 mg/ml<br>Bivalirudin   |    | 3539 |
|  |  | Prochlorperazine edysilate : 0.5 mg/ml<br>Bivalirudin : 5 mg/ml                              |    | 1713 |
|  |  | Prochlorperazine edysilate : 5 mg/ml<br>Calcium gluconate : 10 mg/ml                         |    | 132  |
|  |  | Prochlorperazine edysilate<br>Calcium gluconate  |    | 3644 |
|  |  | Prochlorperazine edysilate : 5 mg/ml<br>Cefmetazole sodium : 100 mg/ml                       |    | 93   |
|  |  | Prochlorperazine edysilate : 5 mg/ml<br>Cimetidine hydrochloride : 150 mg/ml                 |    | 1438 |
|  |  | Prochlorperazine edysilate : 0.5 mg/ml<br>Cisatracurium besylate : 0.1 >> 5 mg/ml            |    | 299  |
|  |  | Prochlorperazine edysilate : 0.5 mg/ml<br>Cladribine : 0.5 mg/ml                             |    | 1496 |
|  |  | Prochlorperazine edysilate : 0.5 mg/ml<br>Cladribine : 0.015 mg/ml                           |    | 1496 |
|  |  | Prochlorperazine edysilate : 0.5 mg/ml<br>Dexmedetomidine : 4 µg/ml                          |    | 1712 |
|  |  | Prochlorperazine edysilate : 0.5 mg/ml<br>Docetaxel : 0.9 mg/ml                              |    | 1754 |
|  |  | Prochlorperazine edysilate : 0.5 mg/ml<br>Doxorubicin hydrochloride liposome peg : 0.4 mg/ml |    | 251  |
|  |  | Prochlorperazine edysilate<br>Erythromycin lactobionate                                      |    | 3674 |
|  |  | Prochlorperazine edysilate : 0.5 mg/ml<br>Etoposide phosphate : 5 mg/ml                      |    | 1410 |
|  |  | Prochlorperazine edysilate : 0.5 mg/ml<br>Fenoldopam mesylate : 80 µg/ml                     |    | 1803 |
|  |  | Prochlorperazine edysilate : 0.5 mg/ml<br>Filgrastim : 30 µg/ml                              |    | 244  |
|  |  | Prochlorperazine edysilate : 1.25 mg/ml<br>Flucloxacillin sodium : 20 mg/ml                  |    | 1232 |
|  |  | Prochlorperazine edysilate : 5 mg/ml<br>Fluconazole : 2 mg/ml                                |    | 496  |
|  |  | Prochlorperazine edysilate : 0.5 mg/ml<br>Fludarabine phosphate : 1 mg/ml                    |    | 492  |
|  |  | Prochlorperazine edysilate : 5 mg/ml<br>Foscarnet sodium : 24 mg/ml                          |    | 73   |
|  |  | Prochlorperazine edysilate : 1.25 mg/ml<br>Furosemide : 1 mg/ml                              |    | 1232 |
|  |  | Prochlorperazine edysilate : 5 mg/ml<br>Gallium nitrate : 1 mg/ml                            |    | 91   |
|  |  | Prochlorperazine edysilate : 0.5 mg/ml<br>Gemcitabine hydrochloride : 10 mg/ml               |    | 1423 |
|  |  | Prochlorperazine edysilate : 0.5 mg/ml<br>Granisetron hydrochloride : 0.05 mg/ml             |    | 182  |
|  |  | Prochlorperazine edysilate : 5 mg/ml<br>Heparin sodium : 1 UI/ml                             | RL | 1228 |
|  |  | Prochlorperazine edysilate : 5 mg/ml<br>Heparin sodium : 1 UI/ml                             |    | 1228 |

|  |  |   |    |      |
|--|--|---|----|------|
|  |  | Prochlorperazine edysilate : 0.5 mg/ml<br>Hetastarch : 60 mg/ml                         |    | 1721 |
|  |  | Prochlorperazine edysilate : 5 mg/ml<br>Hydrocortisone sodium succinate : 1 mg/ml       |    | 1228 |
|  |  | Prochlorperazine edysilate : 5 mg/ml<br>Hydrocortisone sodium succinate : 1 mg/ml       | RL | 1228 |
|  |  | Prochlorperazine edysilate : 5 mg/ml<br>Hydromorphone hydrochloride : 2 >> 40 mg/ml     | ∅  | 1497 |
|  |  | Prochlorperazine edysilate : 1,5 mg/ml<br>Hydromorphone hydrochloride : 0,5 mg/ml       |    | 767  |
|  |  | Prochlorperazine edysilate<br>Ketoprofene   |    | 1646 |
|  |  | Prochlorperazine edysilate : 5 mg/ml<br>Ketorolac tromethamine : 30 mg/ml               | ∅  | 476  |
|  |  | Prochlorperazine edysilate : 0.5 mg/ml<br>Lansoprazole : 0.55 mg/ml                     |    | 1625 |
|  |  | Prochlorperazine edysilate : 0.5 mg/ml<br>Linezolid : 2 mg/ml                           | ∅  | 1925 |
|  |  | Prochlorperazine edysilate : 0.5 mg/ml<br>Melphalan : 0.1 mg/ml                         |    | 169  |
|  |  | Prochlorperazine edysilate : 1.67 mg/ml<br>Midazolam hydrochloride : 1.67 mg/ml         | ∅  | 404  |
|  |  | Prochlorperazine edysilate<br>Morphine sulfate  |    | 1079 |
|  |  | Prochlorperazine edysilate : 5 mg/ml<br>Morphine sulfate : 10 mg/ml                     |    | 1020 |
|  |  | Prochlorperazine edysilate<br>Morphine tartrate   |    | 519  |
|  |  | Prochlorperazine edysilate : 5 mg/ml<br>Nalbuphine hydrochloride : 2,5 >> 10 mg/ml      |    | 616  |
|  |  | Prochlorperazine edysilate : 0.5 mg/ml<br>Ondansetron hydrochloride : 1 mg/ml           |    | 334  |
|  |  | Prochlorperazine edysilate : 0,5 mg/ml<br>Oxaliplatin : 0,5 mg/ml                       |    | 1662 |
|  |  | Prochlorperazine edysilate : 0.5 mg/ml<br>Paclitaxel : 1.2 mg/ml                        |    | 85   |
|  |  | Prochlorperazine edysilate<br>Pantoprazole sodium                                       |    | 2090 |
|  |  | Prochlorperazine edysilate : 0.5 mg/ml<br>Pemetrexed disodium : 20 mg/ml                |    | 1953 |
|  |  | Prochlorperazine edysilate : 0.5 mg/ml<br>Piperacillin sodium / tazobactam : 40/5 mg/ml |    | 81   |
|  |  | Prochlorperazine edysilate : 5 mg/ml<br>Potassium chloride : 40 mEq/l                   | RL | 1228 |
|  |  | Prochlorperazine edysilate : 5 mg/ml<br>Potassium chloride : 40 mEq/l                   |    | 1228 |
|  |  | Prochlorperazine edysilate : 0.5 mg/ml<br>Propofol : 10 mg/ml                           | ∅  | 300  |
|  |  | Prochlorperazine edysilate : 5 mg/ml<br>Ranitidine hydrochloride : 25 mg/ml             | ∅  | 58   |
|  |  | Prochlorperazine edysilate : 0.5 mg/ml<br>Sargramostim : 10 µg/ml                       |    | 335  |

|   |  |  |      |
|---|--|--|------|
|   | Prochlorperazine edysilate : 0.5 mg/ml<br>Teniposide : 0.1 mg/ml         |   | 905  |
|  | Prochlorperazine edysilate : 0.5 mg/ml<br>Thiotepa : 1 mg/ml             |  | 249  |
|  | Prochlorperazine edysilate : 0.192 mg/ml<br>Topotecan : 0.056 mg/ml      |  | 1026 |
|  | Prochlorperazine edysilate : 0.5 mg/ml<br>Vinorelbine tartrate : 1 mg/ml |  | 84   |



## Voie d'administration



## Bibliographie

|    | Type  | Source  |
|----|-------|---|
| 3  | Revue | Trissel LA, Martinez JF.<br>Compatibility of amifostine with selected drugs during simulated Y-site administration.<br>Am J Health-Syst Pharm 1995 ; 52: 2208-2212.   |
| 36 | Revue | Alex S, Gupta SL, Minor JR, Turcovski-Corrales S, Gallelli JF, Taub D, Piscitelli SC.<br>Compatibility and activity of aldesleukin (recombinant interleukin-2) in presence of selected drugs during simulated Y-site administration: Evaluation of three methods.<br>Am J Health-Syst Pharm 1995 ; 52: 2423-2426. |
| 58 | Revue | Parker WA.<br>Physical compatibility of ranitidine HCl with preoperative injectable medications.<br>Can J Hosp Pharm 1985 ; 38: 160-161.  |
| 73 | Revue | Lor E, Takagi J.<br>Visual compatibility of foscarnet with other injectable drugs.<br>Am J Hosp Pharm 1990 ; 47: 157-159.   |
| 81 | Revue | Trissel LA, Martinez JF.<br>Compatibility of piperacillin sodium plus tazobactam with selected drugs during simulated Y-site injection.<br>Am J Hosp Pharm 1994 ; 51: 672-678.  |
| 84 | Revue | Trissel LA, Martinez JF.<br>Visual, turbidimetric, and particle-content assessment of compatibility of vinorelbine tartrate with selected drugs during simulated Y-site injection.<br>Am J Hosp Pharm 1994 ; 51: 495-499.   |
| 85 | Revue | Trissel LA, Bready BB.<br>Turbidimetric assessment of the compatibility of taxol with selected other drugs during simulated Y-site injection.<br>Am J Hosp Pharm 1992 ; 49: 1716-1719.  |
| 91 | Revue | Lober CA, Dollard PA.<br>Visual compatibility of gallium nitrate with selected drugs during Y-site injection.<br>Am J Hosp Pharm 1993 ; 50: 1208-1210.  |
| 93 | Revue | Hutchings SR, Rusho WJ, Tyler LS.<br>Compatibility of cefmetazole sodium with commonly used drugs during Y-site delivery.<br>Am J Health-Syst Pharm 1996 ; 53: 2185-2188.   |
| 99 | Revue | Trissel LA, Martinez JF.<br>Compatibility of aztreonam with selected drugs during simulated Y-site administration.<br>Am J Health-Syst Pharm 1995 ; 52: 1086-1090.  |

|     |       |   |
|-----|-------|---|
| 132 | Revue | Najari Z, Rusho WJ.<br>Compatibility of commonly used bone marrow transplant drugs during Y-site delivery.<br>Am J Health-Syst Pharm 1997 ; 54: 181-184.  |
| 169 | Revue | Trissel LA, Martinez JF.<br>Physical compatibility of melphalan with selected drugs during simulated Y-site administration.<br>Am J Hosp Pharm 1993 ; 50: 2359-2363.  |
| 182 | Revue | Trissel LA, Gilbert DL, Martinez JF.<br>Compatibility of granisetron hydrochloride with selected drugs during simulated Y-site administration.<br>Am J Health-Syst Pharm 1997 ; 54: 56-60.  |
| 244 | Revue | Trissel LA, Martinez JF.<br>Compatibility of filgrastim with selected drugs during simulated Y-site administration.<br>Am J Hosp Pharm 1994 ; 51: 1907-1913.  |
| 249 | Revue | Trissel LA, Martinez JF.<br>Compatibility of thiotepa (lyophilized) with selected drugs during simulated Y-site administration.<br>Am J Health-Syst Pharm 1996 ; 53: 1041-1045.   |
| 251 | Revue | Trissel LA, Gilbert DL, Martinez JF.<br>Compatibility of doxorubicin hydrochloride liposome injection with selected other drugs during simulated Y-site administration.<br>Am J Health-Syst Pharm 1997 ; 54: 2708-2713.               |
| 253 | Revue | Trissel LA, Chandler SW, Folstad JT.<br>Visual compatibility of amsacrine with selected drugs during simulated Y-site injection.<br>Am J Hosp Pharm 1990 ; 47: 2525-2528.   |
| 299 | Revue | Trissel LA, Martinez JF, Gilbert DL.<br>Compatibility of cisatracurium besylate with selected drugs during simulated Y-site administration.<br>Am J Health-Syst Pharm 1997 ; 54: 1735-1741.   |
| 300 | Revue | Trissel LA, Gilbert DL, Martinez JF.<br>Compatibility of propofol injectable emulsion with selected drugs during simulated Y-site administration.<br>Am J Health-Syst Pharm 1997 ; 54: 1287-1292.                                     |
| 301 | Revue | Trissel LA, Gilbert DL, Martinez JF, Baker MB, Walter WV, Mirtallo JM.<br>Compatibility of parenteral nutrient solutions with selected drugs during simulated Y-site administration.<br>Am J Health-Syst Pharm 1997 ; 54: 1295-1300.  |
| 307 | Revue | Trissel LA, Martinez JF.<br>Compatibility of allopurinol sodium with selected drugs during simulated Y-site administration.<br>Am J Hosp Pharm 1994 ; 51: 1792-1799.  |
| 334 | Revue | Trissel LA, Tramonte SM, Grilley BJ.<br>Visual compatibility of ondansetron hydrochloride with selected drugs during simulated Y-site injection.<br>Am J Hosp Pharm 1991 ; 48: 988-992.   |
| 335 | Revue | Trissel LA, Bready BB, Kwan JW, Santiago NM.<br>Visual compatibility of sargamostim with selected antineoplastic agents, anti-infectives, or other drugs during simulated Y-site injection.<br>Am J Hosp Pharm 1992 ; 49: 402-406.    |
| 404 | Revue | Forman JK, Souney PF.<br>Visual compatibility of midazolam hydrochloride with common preoperative injectable medications.<br>Am J Hosp Pharm 1987 ; 44: 2298-2299.  |
| 476 | Revue | Knapp AJ, Mauro VF, Alexander KS.<br>Incompatibility of ketorolac tromethamine with selected postoperative drugs.<br>Am J Hosp Pharm 1992 ; 49: 2960-2962.  |
| 492 | Revue | Trissel LA, Parks NPT, Santiago NM.<br>Visual compatibility of fludarabine phosphate with antineoplastic drugs, anti-infectives, and other selected drugs during simulated Y-site injection.<br>Am J Hosp Pharm 1991 ; 48: 2186-2189. |

|      |       |   |
|------|-------|---|
| 496  | Revue | Lor E, Sheybani T, Takagi J.<br>Visual compatibility of fluconazole with commonly used injectable drugs during simulated Y-site administration.<br>Am J Hosp Pharm 1991 ; 48: 744-746.                                      |
| 519  | Revue | Poggi GL.<br>Compatibility of morphine tartrate admixtures in polypropylene syringes.<br>Aust J Hosp Pharm 1991 ; 21: 316.  |
| 616  | Revue | Jump WG, Plaza VM, Poremba A.<br>Compatibility of nalbuphine hydrochloride with other preoperative medications.<br>Am J Hosp Pharm 1982 ; 39: 841-843.  |
| 767  | Revue | Trinkle R.<br>Compatibility of hydromorphone and prochlorperazine, and irritation due to subcutaneous prochlorperazine infusion.<br>Ann Pharmacotherapy 1997 ; 31: 789-790.   |
| 905  | Revue | Trissel LA, Martinez JF.<br>Screening teniposide for Y-site physical incompatibilities.<br>Hosp Pharm 1994 ; 29: 1010-1017.   |
| 921  | Revue | Trissel LA, Gilbert DL, Martinez JF.<br>Incompatibility and compatibility of amphotericin B cholesteryl sulfate complex with selected other drugs during simulated Y-site administration.<br>Hosp Pharm 1998 ; 33: 284-292. |
| 1020 | Revue | Zuber DEL.<br>Compatibility of morphine sulfate injection and prochlorperazine injection.<br>Am J Hosp Pharm 1987 ; 44: 67.   |
| 1026 | Revue | Mayron D, Gennaro AR.<br>Stability and compatibility of topotecan hydrochloride with selected drugs.<br>Am J Health-Syst Pharm 1999 ; 56: 875-881.  |
| 1079 | Revue | Stevenson JG, Patriarca C.<br>Incompatibility of morphine sulfate and prochlorperazine edisylate in syringes.<br>Am J Hosp Pharm 1985 ; 42: 2651.   |
| 1228 | Revue | Allen LV, Stiles ML.<br>Compatibility of various admixtures at Y-injection sites of intravenous administration sets. Part2.<br>Am J Hosp Pharm 1981 ; 38: 380-381.  |
| 1232 | Revue | Beatson C, Taylor A.<br>A physical compatibility study of furosemide & flucloxacillin injections.<br>Br J Pharm Pract 1987 ; 9: 223-226, 236.   |
| 1410 | Revue | Trissel LA, Martinez JF, Simmons M.<br>Compatibility of etoposide phosphate with selected drugs during simulated Y-site injection.<br>J Am Pharm Assoc 1999 ; 39: 141-145.  |
| 1415 | Revue | Trissel L.A, Gilbert D.L, Martinez J.F, Baker M.B, Walter W.V, Mirtallo J.M.<br>Compatibility of medications with 3-in-1 parenteral nutrition admixtures.<br>JPEN 1999 ; 23: 67-74.   |
| 1423 | Revue | Trissel LA, Martinez JF, Gilbert DL.<br>Compatibility of gemcitabine hydrochloride with 107 selected drugs during simulated Y-site injection.<br>J Am Pharm Assoc 1999 ; 39: 514-518.                                       |
| 1438 | Revue | Souney PF, Solomon MA, Stancher D.<br>Visual compatibility of cimetidine hydrochloride with common preoperative injectable medications.<br>Am J Hosp Pharm 1984 ; 41: 1840-1841.  |
| 1496 | Revue | Trissel LA, Martinez JF, Gilbert DL.<br>Screening cladribine for Y-site physical compatibility with selected drugs.<br>Hosp Pharm 1996 ; 31: 1425-1428.   |
| 1497 | Revue | Walker SE, Iazetta J, DeAngelis C, Lau DWC.<br>Stability and compatibility of combinations of hydromorphone and dimenhydrinate lorazepam or prochlorperazine.<br>Can J Hosp Pharm 1993 ; 46: 61-65.                         |




|      |             |  |
|------|-------------|--|
| 1625 | Revue       | Trissel LA, Saenz C, Williams YW, Ingram D.<br>Incompatibilities of lansoprazole injection with other drugs during simulated Y-site coadministration.<br>Int J Pharm Compound 2001 ; 5: 314-321.               |
| 1646 | Revue       | Kannan S.<br>Incompatibility of prochlorperazine and ketoprofen.<br>Anaesthesia 2001 ; 56: 920.  |
| 1662 | Revue       | Trissel LA, Saenz CA, Ingram DS, Ogundele AB.<br>Compatibility screening of oxaliplatin during simulated Y-site administration with other drugs.<br>J Oncol Pharm Practice 2002 ; 8: 33-37.                    |
| 1712 | Revue       | Trissel LA, Saenz CA.<br>Compatibility screening of Precedex during simulated Y-site administration with other drugs.<br>Int J Pharm Compound 2002 ; 6: 230-233.   |
| 1713 | Revue       | Trissel LA, Saenz CA.<br>Compatibility screening of bivalirudin during simulated Y-site administration with other drugs.<br>Int J Pharm Compound 2002 ; 6: 311-315.  |
| 1721 | Revue       | Trissel LA, Williams KY, Baker MB.<br>Compatibility screening of Hextend during simulated Y-site administration with other drugs.<br>Int J Pharm Compound 2001 ; 5: 69-72.                                     |
| 1754 | Revue       | Trissel LA, Gilbert DL, Wolkin AC.<br>Compatibility of docetaxel with selected drugs during simulated Y-site administration.<br>Int J Pharm Compound 1999 ; 3: 241-244.  |
| 1803 | Revue       | Trissel LA, Saenz CA, Ogundele OB, Ingram D, Baker MB.<br>Compatibility of fenoldopam mesylate with other drugs during simulated Y-site administration.<br>Am J Health-Syst Pharm 2003 ; 60: 80-85.            |
| 1925 | Revue       | Trissel LA, Williams KY, Gilbert DL.<br>Compatibility screening of linezolid injection during simulated Y-site administration with other drugs and infusion solutions.<br>J Am Pharm Assoc 2000 ; 40: 515-519. |
| 1953 | Revue       | Trissel LA, Saenz CA, Ogundele AB, Ingram DS.<br>Physical compatibility of pemetrexed disodium with other drugs during simulated Y-site administration.<br>Am J Health-Syst Pharm 2004 ; 61: 2289-2293.        |
| 2090 | Revue       | Pere H, Chasse V, Forest JM, Hildgen P.<br>Compatibility of injectable pantoprazole in Y-site administration.<br>Pharmactuel 2004 ; 37: 193-196.   |
| 3539 | Laboratoire | Bivalirudin (Angiox®) - Summary of Product Characteristics.<br>The Medecines Company 2013  |
| 3644 | Laboratoire | Calcium gluconate® - Summary of Product Characteristics<br>Hameln Pharmaceuticals 2010   |
| 3674 | Laboratoire | Erythromycin lactobionate - Summary of Product Characteristics<br>PanPharma 2016   |





# Dictionnaire

|   |  |
|---|--|
|  Antiémétique                              |  Gouttes nasales                            |
|  Stabilité des préparations                |  Contenant                                  |
|  Origine                                   |  Excipient                                  |
|  Température                               |  Conservation                               |
|  Durée de stabilité                        |  Biosimilaire                               |
|  Données conflictuelles                    |  Bibliographie                              |
|  Flacon plastique                          |  Poudre                                     |
|  A l'abri de la lumière                    |  Jour                                       |
|  Bibliographie                             |  Neuroleptique                              |
|  Injectable                                |  Noms commerciaux                           |
|  Stabilité en mélange                      |  Solvant                                    |
|  Concentration                             |  Molécule                                   |
|  Non précisé                              |  NaCl 0,9% ou glucose 5%                   |
|  Lumière                                 |  Heure                                    |
|  Compatibilités                          |  Turbidité immédiate                      |
|  Incompatible                            |  Chlorure de sodium 0,9%                  |
|  Glucose 5%                              |  Compatible                               |
|  Nutrition parentérale (mélange binaire) |  Nutrition parentérale (mélange ternaire) |
|  Instabilité chimique                    |  Précipitation immédiate                  |
|  Turbidité en 4 heures                   |  Incompatibilité non précisée             |
|  Eau pour préparation injectable         |  NaCl 0,9% + bactériostatique             |
|  Aucun                                   | <b>RL</b> Ringer lactate   |
|  Solvant spécifique                      |  Voie d'administration                    |
|  Intraveineuse                           |  Perfusion intraveineuse                  |
|  Intramusculaire                         |  Dictionnaire                             |