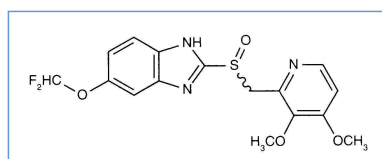


# Stabilis



## Pantoprazole sodium



Noms commerciaux

Acinil	Pérou
Anagastra	Espagne
Anetrum	Argentine
Belpan	Inde
Controloc	Croatie, Egypte, Grèce, Hongrie, Malaisie, Pologne, Roumanie, Slovénie
Dazol	Inde
Dole	Inde
Ducopan	Inde
Dunapan	Inde
Emzole	Inde
Epant	Inde
Eracid	Inde
Eupantol	France
Flumetax	Pérou
Gastrazol	
Inipomp	France
Pangest	Arabie Saoudite
Panto	Canada
Pantoc	Portugal
Pantoloc	Autriche, Danemark, Suède
Pantoprazol	Allemagne, Chili
Pantorc	Italie
Pantozol	Allemagne, Arabie Saoudite, Belgique, Suisse
Pantpas	Turquie
Protium	Grande Bretagne
Protonix	Etats Unis d'Amérique
Segregam	Colombie
Somac	Australie, Finlande, Norvège
Zurcal	Colombie, Suisse
Zurcazol	Grèce



### Stabilité des solutions

?	?	[ ]	- +	?	⌚	Y	!	📖
		4 mg/ml	20-25°C		3			3220
		0,16 mg/ml	4°C		20			2337

PVC		0,4 & 0,8 mg/ml	2-8°C		28				3220
PVC		0,4 & 0,8 mg/ml	20-25°C		3				3220
PVC		0,8 mg/ml	4°C		20				2337
PVC		0,16 mg/ml	4°C		11				2337
PVC		0,4 mg/ml	2-8°C		14				3220
PVC		0,4 mg/ml	20-25°C		2				3220
PVC		0,8 mg/ml	2-8°C		28				3220
PVC		0,8 mg/ml	20-25°C		3				3220
PVC		0,8 mg/ml	4°C		11				2337
		4 mg/ml	2-8°C		28				3220
		4 mg/ml	23°C-25°C		48				2030
		4 mg/ml	3°C-5°C		96				2030
		0,4 mg/ml	22°C		48				4316



## Stabilité en mélange

PP		0.32 mg/ml	22-25°C		Methadone hydrochloride : 0.2 mg/ml	24		1506



## Facteur influençant la stabilité

				4316
				2090



## Compatibilités

		Pantoprazole sodium : 0.8 mg/ml		3948
		Pantoprazole sodium Acetazolamide		2090
		Pantoprazole sodium : 8 mg/ml Acetylsalicylic acid lysinate : 8.33 mg/ml		2139
		Pantoprazole sodium Aciclovir sodium		2090
		Pantoprazole sodium Alprostadil		2090

		Pantoprazole sodium : 0,8 mg/ml		3948
		Pantoprazole sodium Amikacin sulfate		2090
		Pantoprazole sodium Aminophylline		2090
		Pantoprazole sodium Amiodarone hydrochloride		2090
		Pantoprazole sodium : 4 mg/ml Amoxicillin sodium / clavulanic acid : 100/10 mg/ml		3824
		Pantoprazole sodium Amphotericin B		2090
		Pantoprazole sodium : 0.16 >> 0.8 mg/ml Ampicillin sodium : 10 >> 40 mg/ml		1902
		Pantoprazole sodium Ampicillin sodium		2090
		Pantoprazole sodium : 0.4 mg/ml Anidulafungin : 0.5 mg/ml		1982
		Pantoprazole sodium Atropine sulfate		2090
		Pantoprazole sodium : 0.8 mg/ml Blinatumomab : 0.125 & 0.375 µg/ml		3976
		Pantoprazole sodium Bretylum tosilate		2090
		Pantoprazole sodium : 40 mg/ml Caffeine : 10 mg/ml		3964
		Pantoprazole sodium Caffeine		2090
		Pantoprazole sodium Calcium chloride		2090
		Pantoprazole sodium Calcium gluconate		2090
		Pantoprazole sodium : 0,4 mg/ml Caspofungin acetate : 0,7 mg/ml		2247
		Pantoprazole sodium : 0.4 mg/ml Caspofungin acetate : 0.5 mg/ml		2233
		Pantoprazole sodium : 0.16 >> 0.8 mg/ml Cefazolin sodium : 20 >> 40 mg/ml		1902
		Pantoprazole sodium Cefazolin sodium		2090
		Pantoprazole sodium : 4 mg/ml Cefazolin sodium : 41.6 mg/ml		4254
		Pantoprazole sodium : 0.4 mg/ml Cefiderocol sulfate tosylate : 20 mg/mL		4528
		Pantoprazole sodium Cefotaxime sodium		2090
		Pantoprazole sodium Cefoxitin sodium		2090
		Pantoprazole sodium : 0,4 mg/ml Ceftaroline fosamil : 2,22 mg/ml	RL	3249
		Pantoprazole sodium : 0,4 mg/ml Ceftaroline fosamil : 2,22 mg/ml		3249

		Pantoprazole sodium Ceftazidime		2090
		Pantoprazole sodium : 0.4 mg/ml Ceftobiprole medocaril sodium : 2 mg/ml	RL	2269
		Pantoprazole sodium Ceftobiprole medocaril sodium		4650
		Pantoprazole sodium : 0.4 mg/ml Ceftobiprole medocaril sodium : 2 mg/ml		2269
		Pantoprazole sodium : 0.4 mg/ml Ceftobiprole medocaril sodium : 2 mg/ml		2269
		Pantoprazole sodium : 0.4 mg/ml Ceftolozane / tazobactam : 10/5 mg/ml		3828
		Pantoprazole sodium : 0.16 >> 0.8 mg/ml Ceftriaxone disodium : 20 >> 40 mg/ml		1902
		Pantoprazole sodium Cefuroxime sodium		2090
		Pantoprazole sodium Chlorpromazine hydrochloride		2090
		Pantoprazole sodium Ciclosporin		2090
		Pantoprazole sodium Ciprofloxacin lactate		2090
		Pantoprazole sodium : 0,8 mg/ml Cisatracurium besylate : 1 mg/ml		3429
		Pantoprazole sodium Clindamycin phosphate		2090
		Pantoprazole sodium : 0.32 mg/ml Clonidine hydrochloride : 0.0075 mg/ml		1506
		Pantoprazole sodium Cloxacillin sodium		2090
		Pantoprazole sodium : 4 mg/ml Cloxacillin sodium : 100 mg/ml		3012
		Pantoprazole sodium Co-trimoxazole		2090
		Pantoprazole sodium : 8 mg/ml Cyamemazin : 0.2 mg/ml		2139
		Pantoprazole sodium Daunorubicin/cytarabine liposomale : 0,4 mg/mL		4654
		Pantoprazole sodium : 1.6 mg/ml Defibrotide : 8 mg/ml		3728
		Pantoprazole sodium Dexamethasone sodium phosphate		2090
		Pantoprazole sodium Diazepam		2090
		Pantoprazole sodium Digoxin		2090
		Pantoprazole sodium Dimenhydrinate		2090
		Pantoprazole sodium : 0.16 >> 0.8 mg/ml Dimenhydrinate : 0.5 >> 1 mg/ml		1902
		Pantoprazole sodium Diphenhydramine hydrochloride		2090

		Pantoprazole sodium : < 0.05 mg/ml Dobutamine hydrochloride : < 4 mg/ml		1902
		Pantoprazole sodium Dobutamine hydrochloride		2090
		Pantoprazole sodium : 0,16 >> 0,8 mg/ml Dobutamine hydrochloride : 1 >> 4 mg/ml		1902
		Pantoprazole sodium Dopamine hydrochloride		2090
		Pantoprazole sodium : 0.16 >> 0.8 mg/ml Dopamine hydrochloride : 0.8 >> 3.2 mg/ml		1902
		Pantoprazole sodium : 0,4 mg/ml Doripenem : 5 mg/ml		2262
		Pantoprazole sodium Enalaprilate		2090
		Pantoprazole sodium Epinephrine hydrochloride		2090
		Pantoprazole sodium : 0.16 >> 0.8 mg/ml Epinephrine hydrochloride : 16 >> 32 µg/ml		1902
		Pantoprazole sodium : 0,4 mg/ml Eravacycline : 0,6 mg/ml		4434
		Pantoprazole sodium : < 0.12 mg/ml Esmolol hydrochloride : < 2 mg/ml		1902
		Pantoprazole sodium : > 0.12 mg/ml Esmolol hydrochloride : > 2 mg/ml		1902
		Pantoprazole sodium Fentanyl citrate		2090
		Pantoprazole sodium Fluconazole		2090
		Pantoprazole sodium Furosemide		2090
		Pantoprazole sodium Hydrocortisone sodium succinate		2090
		Pantoprazole sodium		2090
		Pantoprazole sodium : 0.32 mg/ml Fentanyl citrate : 30 µg/ml		1506
		Pantoprazole sodium : 0.4 mg/ml Fosfomycin : 30 mg/ml		4055
		Pantoprazole sodium : 0.16 >> 0.8 mg/ml Furosemide : 1 >> 2 mg/ml		1902
		Pantoprazole sodium Gentamicin sulfate		2090
		Pantoprazole sodium Heparin sodium		2090
		Pantoprazole sodium Hydralazine hydrochloride		2090
		Pantoprazole sodium Hydromorphone hydrochloride		2090
		Pantoprazole sodium : 4 mg/ml Imipenem-Cilastatin / Relebactam : 5 mg/ml		4433
		Pantoprazole sodium Indomethacin sodium trihydrate		2090

		Pantoprazole sodium Insulin		2090
		Pantoprazole sodium : 1 mg/ml Insulin : 1 UI/ml		4698
		Pantoprazole sodium : 0.16 >> 0.8 mg/ml Insulin : 5 >> 50 UI/ml		1902
		Pantoprazole sodium : 4 mg/ml Insulin aspart : 1 UI/ml		1508
		Pantoprazole sodium : 0.4 mg/ml Isavuconazonium sulfate : 1.5 mg/ml		3829
		Pantoprazole sodium Isoprenaline hydrochloride		2090
		Pantoprazole sodium Labetalol hydrochloride		2090
		Pantoprazole sodium Lidocaine hydrochloride		2090
		Pantoprazole sodium Lorazepam		2090
		Pantoprazole sodium Magnesium sulfate		2090
		Pantoprazole sodium Mannitol		2090
		Pantoprazole sodium : 4 mg/ml Meropenem : 50 mg/ml		4319
		Pantoprazole sodium Meropenem		2090
		Pantoprazole sodium : 0.32 mg/ml Methadone hydrochloride : 0.2 mg/ml		1506
		Pantoprazole sodium Metoclopramide hydrochloride		2090
		Pantoprazole sodium Metronidazole		2090
		Pantoprazole sodium : > 0.01 mg/ml Midazolam hydrochloride : > 0.1 mg/ml		1902
		Pantoprazole sodium : < 0.01 mg/ml Midazolam hydrochloride : < 0.1 mg/ml		1902
		Pantoprazole sodium : 8 mg/ml Midazolam hydrochloride : 0.1 mg/ml		2139
		Pantoprazole sodium Midazolam hydrochloride		2090
		Pantoprazole sodium : 4 mg/ml Naloxone hydrochloride : 0.4 mg/ml		3408
		Pantoprazole sodium Naloxone hydrochloride		2090
		Pantoprazole sodium : 0.04 mg/ml Nefopam : 0.08 mg/ml		2311
		Pantoprazole sodium : 0.16 >> 0.8 mg/ml Nitroglycerin : 0.1 >> 0.4 mg/ml		1902
		Pantoprazole sodium Nitroglycerin		2090
		Pantoprazole sodium Nitroprusside sodium		2090



		Pantoprazole sodium : < 0.8 mg/ml Norepinephrine bitartrate : < 0.013 mg/ml		1902
		Pantoprazole sodium : > 0.8 mg/ml Norepinephrine bitartrate : > 0.064 mg/ml		1902
		Pantoprazole sodium : < 0.1 mg/ml Norepinephrine bitartrate : < 0.064 mg/ml		1902
		Pantoprazole sodium Norepinephrine bitartrate		2090
		Pantoprazole sodium : > 0.5 mg/ml Octreotide acetate : < 0.004 mg/ml		1902
		Pantoprazole sodium : > 0.5 mg/ml Octreotide acetate : > 0.004 mg/ml		1902
		Pantoprazole sodium Octreotide acetate		2090
		Pantoprazole sodium : < 0.8 mg/ml Octreotide acetate : < 0.0015 mg/ml		1902
		Pantoprazole sodium Oxytocin		2090
		Pantoprazole sodium Pancuronium bromide		2090
		Pantoprazole sodium : 4 mg/ml Paracetamol : 10 mg/ml		4698
		Pantoprazole sodium : 4 mg/ml Paracetamol : 10 mg/ml		4742
		Pantoprazole sodium Penicillin G sodium		2090
		Pantoprazole sodium Pethidine hydrochloride		2090
		Pantoprazole sodium Phenobarbital sodium		2090
		Pantoprazole sodium Phenytoin sodium		2090
		Pantoprazole sodium : 4 mg/ml Phloroglucinol : 0,4 mg/ml		4698
		Pantoprazole sodium : 0,4 mg/ml Phloroglucinol : 2,5 mg/ml		3791
		Pantoprazole sodium : 4 mg/ml Phytomenadione : 0,2 mg/ml		4698
		Pantoprazole sodium Piperacillin sodium		2090
		Pantoprazole sodium Piperacillin sodium / tazobactam		2090
		Pantoprazole sodium : 0.4 mg/ml Plazomicin sulfate : 24 mg/ml		4145
		Pantoprazole sodium : 0,4 mg/ml Posaconazole : 1,2 mg/ml		4521
		Pantoprazole sodium Potassium chloride		2090
		Pantoprazole sodium : 0,4 mg/ml	Normo Sol®	4655
		Pantoprazole sodium : 0.16 >> 0.8 mg/ml Potassium chloride : 20 >> 4000 mEq/l		1902

		Pantoprazole sodium Potassium phosphate		2090
		Pantoprazole sodium Procainamide hydrochloride		2090
		Pantoprazole sodium Prochlorperazine edysilate		2090
		Pantoprazole sodium Propranolol hydrochloride		2090
		Pantoprazole sodium : 4 mg/ml Pyridoxine hydrochloride : 0,0025 mg/ml		4698
		Pantoprazole sodium Ranitidine hydrochloride		2090
		Pantoprazole sodium : 0.32 mg/ml Remifentanil hydrochloride : 20 µg/ml	 	1506
		Pantoprazole sodium Salbutamol sulfate		2090
		Pantoprazole sodium : 4 mg/ml Salbutamol sulfate : 1 mg/ml		3216
		Pantoprazole sodium Sodium bicarbonate		2090
		Pantoprazole sodium : 0,4 mg/ml Sulbactam/durlobactam : 15/15 mg/ml		4801
		Pantoprazole sodium : 0.4 mg/ml Tedizolid phosphate : 0.8 mg/ml		3827
		Pantoprazole sodium : 0.4 mg/ml Telavancin hydrochloride : 7.5 mg/ml	 	3254
		Pantoprazole sodium : 0.4 mg/ml Telavancin hydrochloride : 7.5 mg/ml	RL	3254
		Pantoprazole sodium : 4 mg/ml Thiamine hydrochloride : 1 mg/ml		4698
		Pantoprazole sodium : 4 mg/ml Thiopental sodium : 25 mg/ml		3767
		Pantoprazole sodium Thiopental sodium		2090
		Pantoprazole sodium Ticarcillin / clavulanic acid		2090
		Pantoprazole sodium Tobramycin sulfate		2090
		Pantoprazole sodium : 8 mg/ml Vancomycin hydrochloride : 40 mg/ml		2139
		Pantoprazole sodium Vancomycin hydrochloride		2090
		Pantoprazole sodium : 0.16 >> 0.8 mg/ml Vasopressin : 0.4 >> 1 UI/ml		1902
		Pantoprazole sodium Vecuronium bromide		2090
		Pantoprazole sodium Verapamil hydrochloride		2090
		Pantoprazole sodium Zidovudine		2090





## Bibliographie

	Type	Source
1506	Revue	Lopez-Cabezas C, Guerrero L, Molas G, Anglada H, Soy D. Physicochemical compatibility of high concentration drugs usually Y-site administered in intensive care units. EJHP 2015 ;22:107-112.
1508	Revue	Voirol P, Berger-Gryllaki M, Pannatier A, Eggimann P, Sadeghipour F. Visual compatibility of insulin aspart with intravenous drugs frequently used in ICU. EJHP 2015 ;22:123-124.
1902	Revue	Walker SE, Wyllie A, Law S. Physical compatibility of pantoprazole with selected medications during simulated Y-site administration. Can J Hosp Pharm 2004 ; 57, 2: 90-96.
1982	Revue	Trissel LA, Ogundele AB. Compatibility of anidulafungin with other drugs during simulated Y-site administration. Am J Health-Syst Pharm 2005 ; 62: 834-837.
2030	Revue	Johnson CE. Stability of pantoprazole in 0.9% sodium chloride injection in polypropylene syringes. Am J Health-Syst Pharm 2005 ; 62: 2410-2412.
2090	Revue	Pere H, Chasse V, Forest JM, Hildgen P. Compatibility of injectable pantoprazole in Y-site administration. Pharmactuel 2004 ; 37: 193-196.
2139	Revue	Serrurier C, Chenot ED, Vigneron J, May I, Demor? B. Assessment of injectable drug's administration in two intensive care units and determination of potential physico-chemical incompatibilities. EJHP Science 2006 ; 12,5: 96-99.
2233	Revue	Condie C.K, Tyler L.S, Barker B, Canann D.M. Visual compatibility of caspofungin acetate with commonly used drugs during simulated Y-site delivery Am J Health-Syst Pharm 2008 ; 65, 5: 454-457.
2247	Revue	Chan P, Heatherly K, Kupiec T.C, Trissel L.A. Compatibility of caspofungin acetate injection with other drugs during simulated Y-site coadministration. Int J Pharm Compound 2008 ; 12, 3: 276-278.
2262	Revue	Brammer MK, Chan P, Heatherly K, Trusley C, Kupiec TC, Trissel LA, Psathas PA, Gilmor T, Schaufelberger D. Compatibility of doripenem with other drugs during simulated Y-site administration Am J Health-Syst Pharm 2008 ; 65: 1261-1265.
2269	Revue	Chan P, Bishop A, Kupiec TC, Trissel LA, Gole D, Jimidar IM, Vermeersch H. Compatibility of ceftobiprole medocaril with selected drugs during simulated Y-site administration. Am J Health-Syst Pharm 2008 ; 65, 16: 1545-1551.
2311	Revue	Kambia N.K, Luyckx M, Dine T, Dupin-Spriet T, Gressier B, Brunet C. Nefopam hydrochloride compatibility and stability with selected proton pump inhibitors in bionolyte G5 injection for intravenous infusion. J Clin Pharm Ther 2009 ; 34: 25-31.
2337	Revue	Walker S.E, Iazzetta J, Law S. Extended Stability of Pantoprazole for Injection in 0.9% Sodium Chloride or 5% Dextrose at 4°C and 23°C Can J Hosp Pharm 2009 ; 62, 2: 135-141.

3012	Revue	Sullivan T, Forrest J.M, Leclair G. Compatibility of Cloxacillin Sodium with Selected Intravenous Drugs During Simulated Y-Site Administration Hosp Pharm 2015 ; 50, 3: 214-220.
3216	Revue	Legris ME, Valiquette ME, Lavoie A, Forest JM, Leclair G. Compatibilité physique par évaluation visuelle du salbutamol injectable lors de son administration en Y. Pharmactuel 2011 ; 44, 1 : 14-18
3220	Revue	Donnelly RF. Stability of Pantoprazole Sodium in Glass Vials, Polyvinyl Chloride Minibags, and Polypropylene Syringes. Can J Hosp Pharm 2011 , 64, 32: 192-198.
3249	Revue	Singh BM, Dedhiya MG, Dinunzio J, Chan P, Kupiec TC, Trissel LA, Laudano JB. Compatibility of ceftaroline fosamil for injection with selected drugs during simulated Y-site administration. Am J Health-Syst Pharm 2011 ; 68: 2163-2169.
3254	Revue	Housman S.T, Tessier P.R, Nicolau D.P, Kuti J.L. Physical compatibility of telavancin hydrochloride with select i.v. drugs during simulated Y-site administration Am J Health-Syst Pharm 2011 ; 68: 2265-2270.
3408	Revue	Tollec S, Touzin K, Pelletier E, Forest J.M. Evaluation visuelle de la compatibilité physique de la naloxone avec d'autres médicaments intraveineux usuels. Pharmactuel 2013 ; 46, 1 : 16-21.
3429	Revue	Foushee J.A, Fox L.M, Gormley L.R, Lineberger M.S. Physical compatibility of cisatracurium with selected drugs during simulated Y-site administration Am J Health-Syst Pharm 2015 ; 72:483-486
3728	Revue	Correard F, Savry A, Gauthier-Villano L, Pisano P, Pourroy B. Visual compatibility of defibrotide with selected drugs during simulated Y-site administration. Am J Health-Syst Pharm 2014 ; 71: 1288-1291.
3767	Revue	Legris M.E, Lavoie A, Forrest J.M, Hildgen P. Compatibilité par évaluation visuelle du thiopental injectable lors de son administration en Y avec des médicaments usuels. Pharmactuel 2014 ; 47, 3 : 167-172.
3791	Poster	Sadou Yaye H, Burtet E, Hamel C, Aljhni R, Gard C, Tilleul P. Étude de la compatibilité physico-chimique du phloroglucinol injectable durant les mélanges au sein des tubulures en Y. Apifh Congress, Paris November 2014 2014
3824	Revue	Boudi S, Roy H, Forest JM, Leclair G. Compatibilité physique de l'association amoxicilline-acide clavulanique en injection avec plusieurs autres médicaments lors d'une administration en Y. Pharmactuel 2023 2023;56,3:91-98
3827	Poster	Ghazi I.M, Hamada Y, Nicolau D.P. Compatibility of tedizolid phosphate with selected intravenous drugs via simulated Y-site conditions. ASHP Midyear 2015
3828	Poster	Thabit A.K, Hamada Y, Nicolau D.P. Ceftozolane/tazobactam physical compatibility during simulated Y-site administration. ASHP Midyear 2015
3829	Poster	So W, Kim L, Thabit A.K, Nicolau D.P, Kuti J.L. Compatibility of isavunazonium sulfate during simulated Y-site administration. ASHP Midyear 2015
3948	Revue	Bouchoud L, Fonzo-Christe C, Klingmüller M, Bonnabry P . Compatibility of Intravenous Medications With Parenteral Nutrition - In Vitro Evaluation. JPEN 2012 ;30. 416-424.
3964	Revue	Audet M.A, Forest E, Friciu M, Forest J.M, Leclair G. Compatibilité du citrate de caféine injectable avec plusieurs autres médicaments. Pharmactuel 2017 ; 50,1 : 27-33.

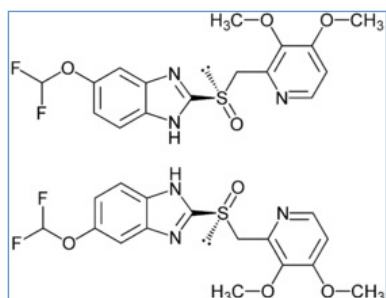
3976	Revue	Du Repaire T, Vigne P, Guedon A, Gauthier-Villano L, Bertault Peres P, Pourroy B. Visual compatibility of blinatumomab with selected co-administrated drugs during simulated Y-site administration. Am J Health-Syst Pharm 2017 ; 74,16 : 1217-1218
4055	Revue	Monogue M, Almarzoky Abuhussain S, Kuti J, Nicolau D. Physical compatibility of fosfomycin for injection with select i.v. drugs during simulated Y-site administration. Am J Health-Syst Pharm 2018 , 75, 1:36-44
4145	Revue	Asempta T.E, Avery L.M, Kidd J.M, Kuti J.L, Nicolau D.P. Physical compatibility of plazomicin with select i.v. drugs during simulated Y-site administration. Am J Health-Syst Pharm 2018 ;75,14:1048-1056
4254	Revue	D’Huart E, Vigneron J, Demoré B. Physical Compatibility of Intravenous Drugs Commonly Used in Intensive Care Units: An Observational Study and Physical Compatibility Laboratory Tests on Anti-Infective Drugs Pharmaceutical Technology in Hospital Pharmacy 2019 ;4,1:29-40
4316	Revue	Carpenter J.F, McNulty M-A, Dusci L.J, Ilett K.F. Stability of Omeprazole Sodium and Pantoprazole Sodium Diluted for Intravenous Infusion. J Pharm Technol 2006 ;22:95-98.
4319	Revue	Lessard J-J, Caron E, Schérer H, Forest J-M, Leclair G. Compatibility of Y-site Injection of Meropenem Trihydrate With 101 Other Injectable Drugs. Hosp Pharm 2020 ; 55, 5: 332-337.
4433	Revue	Ghazi I.M, El Nekidy W.S, Sood A, Dulku A, Patel R, Patel K. Y-site Administration of Imipenem/Cilastatin/ Relebactam With Common Intravenous Medications Clin Ther 2020 ; 42, 3: 475-485.
4434	Revue	Avery L.M, Chen, I.H, Reyes, S, Nicolau, D.P, Kuti J.L. Assessment of the Physical Compatibility of Eravacycline and Common Parenteral Drugs During Simulated Y-site Administration. Clin Ther 2019 ; 41, 10: 2162-2170.
4521	Revue	Polo C, D’Huart E, Lesperlette G, Vigneron J, Meyer F, Demoré B. Compatibility of injectable posaconazole with drugs commonly used in a hematology care unit. Pharmaceutical Technology in Hospital Pharmacy 2020
4528	Revue	Lu J, Liu Q, Kupiec T, Vail H, Lunch L, Fam D, Vu N. Physical Compatibility of Cefiderocol with Selected Intravenous Drugs During Simulated Y-site Administration. Int J Pharm Compound 2021 ;25,1:52-61
4650	Laboratoire	Ceftibiprole (Zevtera 500 mg powder for concentrate for solution for infusion.) Summary of Product Characteristics, Advanz Pharma updated 4 aug 2021. Advanz Pharma 2021
4654	Poster	Sicard G, Donnette M, Martin N, Gensollen S, Pourroy B, Fanciullino R. Compatibilité visuelle du Vyxeos® lors d’administration en Y avec une sélection de médicaments injectables. Communication personnelle 2021
4655	Revue	Holyk A, Lindner A, Lindner S, Shippert B Physical compatibility of Normosol-R with critical care medications used in patients with COVID-19 during simulated Y-site administration. Am J Health-Syst Pharm 2022 ;79,1:27-33
4698	Revue	Ayari G, D’Huart E, Vigneron J, Demoré B. Y-site compatibility of intravenous medications commonly used in intensive care units : laboratory tests on 75 mixtures involving nine main drugs. Pharmaceutical Technology in Hospital Pharmacy 2022
4742	Revue	Macoviciuc M, Nguyen C, Forest J-M, Leclair G. Compatibilité physique de l’acétaminophène injectable avec 102 autres médicaments lors d’une administration en Y. Pharmactuel 2022 ; 55, 4: 247-255.

4801	Revue	Ruiz V, Yuwei Shen Y, Abouelhassan Y, Fouad A, Nicolau D, Kuti J. Physical compatibility of sulbactam/durlobactam with select intravenous drugs during simulated Y-site administration. Am J Health-Syst Pharm 2024 ;51,1:
------	-------	--

# Stabilis



## Pantoprazole sodium



### Stabilité des préparations

		120 mg Protonix®	NaHCO <sub>3</sub> 5.04 g Eau purifiée >> 60 ml	2-8°C		62		2385
		300 mg ® = ?	SyrSpend SF Alka® 6,3 g Eau purifiée >> 100 ml	2-8°C		90		3913



### Bibliographie

	Type	Source
2385	Revue	Dentinger PJ, Swenson CF, Anaizi NH. Stability of pantoprazole in an extemporaneously compounded oral liquid Am J Health-Syst Pharm 2002 ; 59: 953-956.
3913	Revue	Polonini H.C, Silva S.L, Loures S, Almy R, Balland A, Brandao M.A.F, Ferreira A.O. Compatibility of proton pump inhibitors in a preservative-free suspending vehicle. EJHP 2018 ;25,3:150-156.



# Dictionnaire

 Inhibiteur de la pompe à proton	 Injectable
 Noms commerciaux	 Stabilité des solutions
 Contenant	 Molécule
 Concentration	 Température
 Conservation	 Durée de stabilité
 Biosimilaire	 Données conflictuelles
 Bibliographie	 Verre
 Chlorure de sodium 0,9%	 Lumière
 Jour	 Polyvinyl chlorure
 A l'abri de la lumière	 Glucose 5%
 Seringue polypropylène	 Heure
 Non précisé	 NaCl 0,9% ou glucose 5%
 Stabilité en mélange	 Solvant
 Molécule	 Polypropylène
 Facteur influençant la stabilité	 Provoque
 Diminution de la stabilité	 NaHCO3
 Dégradation	 Compatibilités
 Changement de couleur	 Incompatible
 Nutrition parentérale (mélange binaire)	 Compatible
 Précipitation en 4 heures	 Nutrition parentérale (mélange ternaire)
 Précipitation immédiate	 Turbidité en 1 heure
 Incompatibilité non précisée	 Aucun
<b>RL</b> Ringer lactate	 Turbidité immédiate
 Précipitation en 1 heure	 Eau pour préparation injectable
 Précipitation en 15 minutes	 Normosol®
 Changement de couleur à 6 heures	 Voie d'administration
 Perfusion intraveineuse	 Bibliographie
 Solution buvable	 Stabilité des préparations
 Origine	 Excipient
 Flacon plastique	 Comprimés





Poudre



Dictionnaire