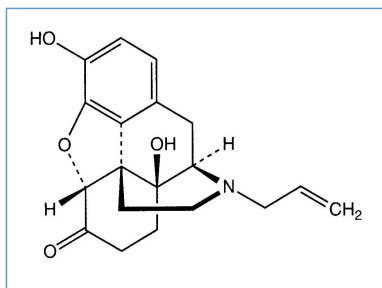


Stabilis



Naloxone hydrochloride



Noms commerciaux

| | |
|-------------------|---|
| DBL Naloxone | Malaisie, Nouvelle Zélande |
| Grayxona | Argentine |
| Lefebre | Mexique |
| Mapin | Malaisie |
| Miniject Naloxone | Grande Bretagne |
| Naloxan | Iran |
| Naloxon | Allemagne, Belgique, Islande, Norvège, Suède, Suisse |
| Naloxona | Argentine, Chili, Colombie, Espagne |
| Naloxone | Arabie Saoudite, Australie, Canada, Espagne, Etats Unis d'Amérique, Grande Bretagne, Iran, Irlande, Italie, Nouvelle Zélande |
| Naloxonum | Pologne |
| Narcan | Australie, Etats Unis d'Amérique, France, Grande Bretagne, Grèce, Irlande, Italie, Luxembourg, Nouvelle Zélande, Pays bas, Suisse |
| Narcanti | Allemagne, Autriche, Chili, Danemark, Finlande, Hongrie, Suède |
| Narcotan | Inde |
| Narxona | Argentine |
| Naxan | Portugal |
| Naxone | Arabie Saoudite |
| Nexodal | Espagne, Norvège, Roumanie, Suède |



Stabilité en mélange

| | | 0,004 mg/ml | 25°C | | Fentanyl citrate : 20 µg/ml | 72 | | 4559 |
|--|--|--------------|------|--|-----------------------------|----|--|------|
| | | 0,004 mg/ml | 4°C | | Fentanyl citrate : 20 µg/ml | 72 | | 4559 |
| | | 0.004 mg/ml | 22°C | | Morphine sulfate : 1 mg/ml | 72 | | 3434 |
| | | 0,0125 mg/ml | 22°C | | Morphine sulfate : 1 mg/ml | 72 | | 3434 |
| | | 0,025 mg/ml | 22°C | | Morphine sulfate : 1 mg/ml | 72 | | 3434 |
| | | 0,004 mg/ml | 25°C | | Fentanyl citrate : 20 µg/ml | 72 | | 4559 |

| | | | | | | | | |
|-----|--|--------------|------|--|--|----|--|------|
| PVC | | 0,004 mg/ml | 4°C | | Fentanyl citrate : 20 µg/ml | 72 | | 4559 |
| PVC | | 0,025 mg/ml | 4°C | | Morphine sulfate : 1 mg/ml | 30 | | 3434 |
| PVC | | 0,0125 mg/ml | 4°C | | Morphine sulfate : 1 mg/ml | 30 | | 3434 |
| PVC | | 0,004 mg/ml | 4°C | | Morphine sulfate : 1 mg/ml | 30 | | 3434 |
| PP | | 0,133 mg/ml | 23°C | | Ondansetron hydrochloride : 1,33 mg/ml | 24 | | 815 |
| PP | | 0,133 mg/ml | 4°C | | Ondansetron hydrochloride : 1,33 mg/ml | 24 | | 815 |



Compatibilités

| | | Naloxone hydrochloride : 0.4 mg/ml Aciclovir sodium : 50 mg/ml | | 3408 |
|--|--|---|--|------|
| | | Naloxone hydrochloride : 0.4 mg/ml Amikacin sulfate : 250 mg/ml | | 3408 |
| | | Naloxone hydrochloride : 0.4 mg/ml Aminophylline : 50 mg/ml | | 3408 |
| | | Naloxone hydrochloride : 0.4 mg/ml Amiodarone hydrochloride : 50 mg/ml | | 3408 |
| | | Naloxone hydrochloride : 0,4 mg/ml Amoxicillin sodium / clavulanic acid : 100/10 mg/ml | | 3824 |
| | | Naloxone hydrochloride : 0.4 mg/ml Amphotericin B : 4 mg/ml | | 3408 |
| | | Naloxone hydrochloride : 0,4 mg/ml Amphotericin B cholesteryl sulfate complex : 0,83 mg/ml | | 921 |
| | | Naloxone hydrochloride : 0.4 mg/ml Ampicillin sodium : 250 mg/ml | | 3408 |
| | | Naloxone hydrochloride : 0.4 mg/ml Atropine sulfate : 0.4 mg/ml | | 3408 |
| | | Naloxone hydrochloride : 0.4 mg/ml Azithromycine : 500 mg/ml | | 3408 |
| | | Naloxone hydrochloride : 0.2 mg/ml Blinatumomab : 0.125 & 0.375 µg/ml | | 3976 |
| | | Naloxone hydrochloride : 0.4 mg/ml Caffeine : 10 mg/ml | | 3408 |
| | | Naloxone hydrochloride : 0.4 mg/ml Caffeine : 10 mg/ml | | 3964 |
| | | Naloxone hydrochloride : 0.4 mg/ml Calcium chloride : 78 mg/ml | | 3408 |
| | | Naloxone hydrochloride : 0.4 mg/ml Calcium gluconate : 100 mg/ml | | 3408 |
| | | Naloxone hydrochloride : 0.4 mg/ml Caspofungin acetate : 5 mg/ml | | 3408 |
| | | Naloxone hydrochloride : 0.4 mg/ml Cefazolin sodium : 100 mg/ml | | 3408 |
| | | Naloxone hydrochloride : 0.04 mg/ml Cefiderocol sulfate tosylate : 20 mg/mL | | 4528 |

| | | | | |
|--|--|--|------|------|
| | Naloxone hydrochloride : 0.4 mg/ml Cefotaxime sodium : 100 mg/ml | ∅ | 3408 | |
| | Naloxone hydrochloride : 0.4 mg/ml Cefoxitin sodium : 100 mg/ml | ∅ | 3408 | |
| | Naloxone hydrochloride : 0.4 mg/ml Ceftazidime : 100 mg/ml | ∅ | 3408 | |
| | Naloxone hydrochloride : 0.04 mg/ml Ceftolozane / tazobactam : 10/5 mg/ml | | 3828 | |
| | Naloxone hydrochloride : 0.4 mg/ml Ceftriaxone disodium : 100 mg/ml | ∅ | 3408 | |
| | Naloxone hydrochloride : 0.4 mg/ml Cefuroxime sodium : 100 mg/ml | ∅ | 3408 | |
| | Naloxone hydrochloride : 0.4 mg/ml Chlorpromazine hydrochloride : 25 mg/ml | ∅ | 3408 | |
| | | Naloxone hydrochloride : 0.4 mg/ml Ciclosporin : 50 mg/ml | ∅ | 3408 |
| | Naloxone hydrochloride : 0.4 mg/ml Ciprofloxacin lactate : 2 mg/ml | ∅ | 3408 | |
| | Naloxone hydrochloride : 0.4 mg/ml Clindamycin phosphate : 150 mg/ml | ∅ | 3408 | |
| | Naloxone hydrochloride : 0.4 mg/ml Cloxacillin sodium : 250 mg/ml | ∅ | 3408 | |
| | Naloxone hydrochloride : 0.4 mg/ml Cloxacillin sodium : 100 mg/ml | | 3012 | |
| | Naloxone hydrochloride : 0.4 mg/ml Co-trimoxazole | ∅ | 3408 | |
| | Naloxone hydrochloride : 0.4 mg/ml Defibrotide : 8 mg/ml | | 3728 | |
| | Naloxone hydrochloride : 0.4 mg/ml Dexamethasone sodium phosphate : 4 mg/ml | ∅ | 3408 | |
| | | Naloxone hydrochloride : 0.4 mg/ml Diazepam : 5 mg/ml | ∅ | 3408 |
| | Naloxone hydrochloride : 0.4 mg/ml Digoxin : 50 µg/ml | ∅ | 3408 | |
| | Naloxone hydrochloride : 0.4 mg/ml Dimenhydrinate : 10 mg/ml | ∅ | 3408 | |
| | Naloxone hydrochloride Dimenhydrinate | | 2087 | |
| | Naloxone hydrochloride : 0.4 mg/ml Diphenhydramine hydrochloride : 50 mg/ml | ∅ | 3408 | |
| | Naloxone hydrochloride : 0.4 mg/ml Dobutamine hydrochloride : 12.5 mg/ml | ∅ | 3408 | |
| | Naloxone hydrochloride : 0.4 mg/ml Dopamine hydrochloride : 40 mg/ml | ∅ | 3408 | |
| | Naloxone hydrochloride : 0.4 mg/ml Droperidol : 2.5 mg/ml | ∅ | 3408 | |
| | Naloxone hydrochloride : 0.4 mg/ml Epinephrine hydrochloride : 1000 µg/ml | ∅ | 3408 | |
| | Naloxone hydrochloride : 0.4 mg/ml Erythromycin lactobionate : 50 mg/ml | ∅ | 3408 | |
| | Naloxone hydrochloride : 0.4 mg/ml Esmolol hydrochloride : 10 mg/ml | ∅ | 3408 | |

| | | | | |
|--|--|--|--|------|
| | | Naloxone hydrochloride : 0.4 mg/ml Fenoldopam mesylate : 80 µg/ml | | 1803 |
| | | Naloxone hydrochloride : 0.4 mg/ml Fentanyl citrate : 50 µg/ml | | 3408 |
| | | Naloxone hydrochloride : 0.4 mg/ml Fluconazole : 2 mg/ml | | 3408 |
| | | Naloxone hydrochloride : 0.04 mg/ml Fosfomycin : 30 mg/ml | | 4055 |
| | | Naloxone hydrochloride : 0.4 mg/ml Furosemide : 10 mg/ml | | 3408 |
| | | Naloxone hydrochloride : 0.4 mg/ml Gentamicin sulfate : 40 mg/ml | | 3408 |
| | | Naloxone hydrochloride : 0.4 mg/ml Heparin sodium : 1000 UI/ml | | 3408 |
| | | Naloxone hydrochloride : 0.4 mg/ml Hydralazine hydrochloride : 1 mg/ml | | 3408 |
| | | Naloxone hydrochloride : 0.4 mg/ml Hydrocortisone sodium succinate : 125 mg/ml | | 3408 |
| | | Naloxone hydrochloride : 0.4 mg/ml Hydromorphone hydrochloride : 10 mg/ml | | 3408 |
| | | Naloxone hydrochloride : 0,004 mg/ml Imipenem-Cilastatin / Relebactam : 5 mg/ml | | 4433 |
| | | Naloxone hydrochloride : 0.4 mg/ml Indomethacin sodium trihydrate : 0.5 mg/ml | | 3408 |
| | | Naloxone hydrochloride : 0.4 mg/ml Insulin : 100 UI/ml | | 3408 |
| | | Naloxone hydrochloride : 0.04 mg/ml Isavuconazonium sulfate : 1.5 mg/ml | | 3829 |
| | | Naloxone hydrochloride : 0.4 mg/ml Isoprenaline hydrochloride : 0.2 mg/ml | | 3408 |
| | | Naloxone hydrochloride : 0.4 mg/ml Ketamine hydrochloride : 50 mg/ml | | 3408 |
| | | Naloxone hydrochloride : 0.4 mg/ml Ketamine hydrochloride : 50 mg/ml | | 2109 |
| | | Naloxone hydrochloride : 0.4 mg/ml L-carnitine : 200 mg/ml | | 3408 |
| | | Naloxone hydrochloride : 0.4 mg/ml Labetalol hydrochloride : 5 mg/ml | | 3408 |
| | | Naloxone hydrochloride : 0.4 mg/ml Lansoprazole : 0.55 mg/ml | | 1625 |
| | | Naloxone hydrochloride : 0.4 mg/ml Levofloxacin : 0.5 mg/ml | | 3408 |
| | | Naloxone hydrochloride : 0.4 mg/ml Lidocaine hydrochloride : 1 mg/ml | | 3408 |
| | | Naloxone hydrochloride : 0.4 mg/ml Linezolid : 2 mg/ml | | 1925 |
| | | Naloxone hydrochloride : 0.4 mg/ml Lorazepam : 4 mg/ml | | 3408 |
| | | Naloxone hydrochloride : 0.4 mg/ml Magnesium sulfate : 500 mg/ml | | 3408 |
| | | Naloxone hydrochloride : 0.4 mg/ml Mannitol : 250 mg/ml | | 3408 |

| | | | | |
|--|--|---|------|------|
| | Naloxone hydrochloride : 0.4 mg/ml Meropenem : 50 mg/ml | | 4319 | |
| | Naloxone hydrochloride : 0.4 mg/ml Meropenem : 50 mg/ml | | 3408 | |
| | Naloxone hydrochloride : 0.4 mg/ml Methylprednisolone acetate : 62.5 mg/ml | | 3408 | |
| | Naloxone hydrochloride : 0.4 mg/ml Metoclopramide hydrochloride : 5 mg/ml | | 3408 | |
| | Naloxone hydrochloride : 0.4 mg/ml Metronidazole : 5 mg/ml | | 3408 | |
| | Naloxone hydrochloride : 0.4 mg/ml Midazolam hydrochloride : 5 mg/ml | | 3408 | |
| | Naloxone hydrochloride : 0.4 mg/ml Milrinone lactate : 1 mg/ml | | 3408 | |
| | Naloxone hydrochloride : 0,004 >> 0,025 mg/ml Morphine sulfate : 1 mg/ml | | 3434 | |
| | Naloxone hydrochloride : 0.4 mg/ml N-acetylcysteine : 200 mg/ml | | 3408 | |
| | | Naloxone hydrochloride : 0.4 mg/ml Nitroglycerin : 5 mg/ml | | 3408 |
| | Naloxone hydrochloride : 0.4 mg/ml Nitroprusside sodium : 10 mg/ml | | 3408 | |
| | Naloxone hydrochloride : 0.4 mg/ml Norepinephrine bitartrate : 1 mg/ml | | 3408 | |
| | Naloxone hydrochloride : 0.4 mg/ml Octreotide acetate : 0.5 mg/ml | | 3408 | |
| | Naloxone hydrochloride : 0.4 mg/ml Ondansetron hydrochloride : 2 mg/ml | | 3408 | |
| | Naloxone hydrochloride : 0.133 mg/ml Ondansetron hydrochloride : 1.33 mg/ml | | 815 | |
| | Naloxone hydrochloride : 0.4 mg/ml Oxytocin : 10 UI/ml | | 3408 | |
| | Naloxone hydrochloride : 0.4 mg/ml Pancuronium bromide : 2 mg/ml | | 3408 | |
| | | Naloxone hydrochloride Pantoprazole sodium | 2090 | |
| | | Naloxone hydrochloride : 0.4 mg/ml Pantoprazole sodium : 4 mg/ml | | 3408 |
| | Naloxone hydrochloride : 0.4 mg/ml Paracetamol : 10 mg/ml | | 4742 | |
| | Naloxone hydrochloride : 0.4 mg/ml Phenobarbital sodium : 60 mg/ml | | 3408 | |
| | | Naloxone hydrochloride : 0.4 mg/ml Phenytoin sodium : 50 mg/ml | | 3408 |
| | Naloxone hydrochloride : 0.4 mg/ml Piperacillin sodium : 200 mg/ml | | 3408 | |
| | Naloxone hydrochloride : 0.4 mg/ml Piperacillin sodium / tazobactam : 200 mg/ml | | 3408 | |
| | Naloxone hydrochloride : 0.04 mg/ml Plazomicin sulfate : 24 mg/ml | | 4145 | |
| | Naloxone hydrochloride : 0.4 mg/ml Potassium chloride : 200 mEq/l | | 3408 | |

| | | | |
|--|---|----|------|
| | Naloxone hydrochloride : 0.4 mg/ml Potassium phosphate : 3 mmol/ml | ∅ | 3408 |
| | Naloxone hydrochloride : 0.4 mg/ml Promethazine hydrochloride : 25 mg/ml | ∅ | 3408 |
| | | | 660 |
| | Naloxone hydrochloride : 0.4 mg/ml Propofol : 10 mg/ml | ∅ | 300 |
| | Naloxone hydrochloride : 0.4 mg/ml Propranolol hydrochloride : 1 mg/ml | ∅ | 3408 |
| | Naloxone hydrochloride : 0.4 mg/ml Ranitidine hydrochloride : 25 mg/ml | ∅ | 3408 |
| | Naloxone hydrochloride : 0.4 mg/ml Rocuronium bromide : 10 mg/ml | ∅ | 3408 |
| | Naloxone hydrochloride : 0.4 mg/ml Salbutamol sulfate : 1 mg/ml | ∅ | 3408 |
| | Naloxone hydrochloride : 0.4 mg/ml Sodium bicarbonate : 84 mg/ml | ∅ | 3408 |
| | Naloxone hydrochloride : 0.4 mg/ml Sufentanil citrate : 0.05 mg/ml | ∅ | 3408 |
| | Naloxone hydrochloride : 0.4 mg/ml Sugammadex : 100 mg/ml | ∅ | 3372 |
| | Naloxone hydrochloride : 0,04 mg/ml Sulbactam/durlobactam : 15/15 mg/ml | ▲ | 4801 |
| | Naloxone hydrochloride : 0.04 mg/ml Tedizolid phosphate : 0.8 mg/ml | ▲ | 3827 |
| | | ∅ | 3408 |
| | Naloxone hydrochloride : 0.4 mg/ml Ticarcillin / clavulanic acid : 200 mg/ml | ∅ | 3408 |
| | Naloxone hydrochloride : 0.4 mg/ml Tobramycin sulfate : 40 mg/ml | ∅ | 3408 |
| | Naloxone hydrochloride : 0.4 mg/ml Valproic acid : 100 mg/ml | ∅ | 3408 |
| | Naloxone hydrochloride : 0,4 mg/ml | RL | 4603 |
| | Naloxone hydrochloride : 0.4 mg/ml Vancomycin hydrochloride : 50 mg/ml | ∅ | 3408 |
| | Naloxone hydrochloride : 0.0008 mg/ml Verapamil hydrochloride : 0.08 mg/ml | ▲◆ | 1057 |
| | Naloxone hydrochloride : 0.4 mg/ml Voriconazole : 10 mg/ml | ∅ | 3408 |



Voie d'administration





Bibliographie

| | Type | Source |
|------|-------|---|
| 300 | Revue | Trissel LA, Gilbert DL, Martinez JF. Compatibility of propofol injectable emulsion with selected drugs during simulated Y-site administration. Am J Health-Syst Pharm 1997 ; 54: 1287-1292. |
| 660 | Revue | Michaels MR, Stauffer GL, Haas DP. Propofol compatibility with other intravenous drug products - Two new methods of evaluating IV emulsion compatibility. Ann Pharmacotherapy 1996 ; 30: 228-232. |
| 815 | Revue | Stewart JT, Warren FW, King DT, Venkateshwaran TG, Fox JL. Stability of ondansetron hydrochloride and 12 medications in plastic syringes. Am J Health-Syst Pharm 1998 ; 55: 2630-2634. |
| 921 | Revue | Trissel LA, Gilbert DL, Martinez JF. Incompatibility and compatibility of amphotericin B cholesteryl sulfate complex with selected other drugs during simulated Y-site administration. Hosp Pharm 1998 ; 33: 284-292. |
| 1057 | Revue | Cutie MR. Compatibility of verapamil hydrochloride injection with commonly used additives. Am J Hosp Pharm 1983 ; 40: 1205-1207. |
| 1625 | Revue | Trissel LA, Saenz C, Williams YW, Ingram D. Incompatibilities of lansoprazole injection with other drugs during simulated Y-site coadministration. Int J Pharm Compound 2001 ; 5: 314-321. |
| 1803 | Revue | Trissel LA, Saenz CA, Ogundele OB, Ingram D, Baker MB. Compatibility of fenoldopam mesylate with other drugs during simulated Y-site administration. Am J Health-Syst Pharm 2003 ; 60: 80-85. |
| 1925 | Revue | Trissel LA, Williams KY, Gilbert DL. Compatibility screening of linezolid injection during simulated Y-site administration with other drugs and infusion solutions. J Am Pharm Assoc 2000 ; 40: 515-519. |
| 2087 | Revue | Ferreira E, Forest JM, Hildgen P. Compatibility of dimenhydrinate injectable by Y administration. Pharmactuel 2004 ; 37: 17-20. |
| 2090 | Revue | Pere H, Chasse V, Forest JM, Hildgen P. Compatibility of injectable pantoprazole in Y-site administration. Pharmactuel 2004 ; 37: 193-196. |
| 2109 | Revue | Pelletier E, Forest JM, Hildgen P. Compatibilité de la kétamine injectable lors de l'administration en dérivé avec d'autres médicaments usuels. Pharmactuel 2006 ; 39: 71-75. |
| 3012 | Revue | Sullivan T, Forrest J.M, Leclair G. Compatibility of Cloxacillin Sodium with Selected Intravenous Drugs During Simulated Y-Site Administration Hosp Pharm 2015 ; 50, 3: 214-220. |
| 3372 | Revue | Hanci V, Ali Kiraz H, Ömür D, Ekin S, Uyan B, Yurtlu B.S. Precipitation in Gallipoli: Sugammadex / Amiodarone & Sugammadex / Dobutamine & Sugammadex / Protamine. Rev Bras Anestesiol 2013 ; 63, 1: 163-166. |
| 3408 | Revue | Tollec S, Touzin K, Pelletier E, Forest J.M. Evaluation visuelle de la compatibilité physique de la naloxone avec d'autres médicaments intraveineux usuels. Pharmactuel 2013 ; 46, 1 : 16-21. |

| | | |
|------|--------|---|
| 3434 | Revue | Kistner C, Ensom M.H.H, Decarie D, Lauder G, Carr R.R. Compatibility and Stability of Morphine Sulphate and Naloxone Hydrochloride in 0.9% Sodium Chloride for Injection. Can J Hosp Pharm 2013 ; 66, 3 : 167-170. |
| 3728 | Revue | Correard F, Savry A, Gauthier-Villano L, Pisano P, Pourroy B. Visual compatibility of defibrotide with selected drugs during simulated Y-site administration. Am J Health-Syst Pharm 2014 ; 71: 1288-1291. |
| 3824 | Revue | Boudi S, Roy H, Forest JM, Leclair G. Compatibilité physique de l'association amoxicilline-acide clavulanique en injection avec plusieurs autres médicaments lors d'une administration en Y. Pharmactuel 2023 2023;56,3:91-98 |
| 3827 | Poster | Ghazi I.M, Hamada Y, Nicolau D.P. Compatibility of tedizolid phosphate with selected intravenous drugs via simulated Y-site conditions. ASHP Midyear 2015 |
| 3828 | Poster | Thabit A.K, Hamada Y, Nicolau D.P. Ceftazolidime/tazobactam physical compatibility during simulated Y-site administration. ASHP Midyear 2015 |
| 3829 | Poster | So W, Kim L, Thabit A.K, Nicolau D.P, Kuti J.L. Compatibility of isavanazonium sulfate during simulated Y-site administration. ASHP Midyear 2015 |
| 3964 | Revue | Audet M.A, Forest E, Friciu M, Forest J.M, Leclair G. Compatibilité du citrate de caféine injectable avec plusieurs autres médicaments. Pharmactuel 2017 ; 50,1 : 27-33. |
| 3976 | Revue | Du Repaire T, Vigne P, Guedon A, Gauthier-Villano L, Bertault Peres P, Pourroy B. Visual compatibility of blinatumomab with selected co-administrated drugs during simulated Y-site administration. Am J Health-Syst Pharm 2017 ; 74,16 : 1217-1218 |
| 4055 | Revue | Monogue M, Almarzoky Abuhussain S, Kuti J, Nicolau D. Physical compatibility of fosfomycin for injection with select i.v. drugs during simulated Y-site administration. Am J Health-Syst Pharm 2018 , 75, 1:36-44 |
| 4145 | Revue | Asempa T.E, Avery L.M, Kidd J.M, Kuti J.L, Nicolau D.P. Physical compatibility of plazomicin with select i.v. drugs during simulated Y-site administration. Am J Health-Syst Pharm 2018 ;75,14:1048-1056 |
| 4319 | Revue | Lessard J-J, Caron E, Schérier H, Forest J-M, Leclair G. Compatibility of Y-site Injection of Meropenem Trihydrate With 101 Other Injectable Drugs. Hosp Pharm 2020 ; 55, 5: 332-337. |
| 4433 | Revue | Ghazi I.M, El Nekidy W.S, Sood A, Dulku A, Patel R, Patel K. Y-site Administration of Imipenem/Cilastatin/ Relebactam With Common Intravenous Medications Clin Ther 2020 ; 42, 3: 475-485. |
| 4528 | Revue | Lu J, Liu Q, Kupiec T, Vail H, Lunch L, Fam D, Vu N. Physical Compatibility of Cefiderocol with Selected Intravenous Drugs During Simulated Y-site Administration. Int J Pharm Compound 2021 ;25,1:52-61 |
| 4559 | Revue | Chen P, Chen F, Lei J, Zhou B. Physical Compatibility and Chemical Stability of Fentanyl and Naloxone Hydrochloride in 0.9% Sodium Chloride Injection Solution for Patient-Controlled Analgesia Administration. Drug Design Dev Ther 2020 ;14, 4179-4187. |
| 4603 | Revue | Vallée M, Barthélémy I, Friciu M, Pelletier E, Forest J.M, Benoit F, Leclair G. Compatibility of Lactated Ringer's Injection With 94 Selected Intravenous Drugs During Simulated Y-site Administration. Hosp Pharm 2021 ; 56, 4: 228-234. |

| | | |
|------|-------|--|
| 4742 | Revue | Macoviciuc M, Nguyen C, Forest J-M, Leclair G. Compatibilité physique de l'acétaminophène injectable avec 102 autres médicaments lors d'une administration en Y. Pharmactuel 2022 ; 55, 4: 247-255. |
| 4801 | Revue | Ruiz V, Yuwei Shen Y, Abouelhassan Y, Fouad A, Nicolau D, Kuti J. Physical compatibility of sulbactam/durlobactam with select intravenous drugs during simulated Y-site administration. Am J Health-Syst Pharm 2024 ;51,1: |



Dictionnaire

| | |
|---|--|
|  Antidote |  Injectable |
|  Noms commerciaux |  Stabilité en mélange |
|  Contenant |  Solvant |
|  Concentration |  Température |
|  Conservation |  Molécule |
|  Durée de stabilité |  Bibliographie |
|  Verre |  Chlorure de sodium 0,9% |
|  A l'abri de la lumière |  Heure |
|  Polyvinyl chlorure |  Non précisée |
|  Jour |  Polypropylène |
|  Lumière |  Compatibilités |
|  Incompatibilité non précisée |  Incompatible |
|  Aucun |  Compatible |
|  Précipitation immédiate |  Glucose 5% |
|  NaCl 0,9% ou glucose 5% |  Eau pour préparation injectable |
|  Précipitation en 15 minutes |  Précipitation en 1 heure |
|  Précipitation en 4 heures |  Instabilité de l'émulsion à 4 heures |
|  Turbidité en 15 minutes | RL Ringer lactate |
|  Voie d'administration |  Intraveineuse |
|  Perfusion intraveineuse |  Intramusculaire |
|  Sous cutanée |  Perfusion SC continue |
|  Bibliographie |  Dictionnaire |