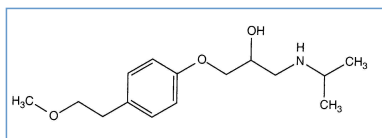


# Stabilis



## Metoprolol tartrate



Noms commerciaux

Beloc	Autriche, Suisse, Turquie
Beloken	Espagne
Betaloc	Grande Bretagne, Pologne
Lopresor	Canada
Selokeen	Pays bas
Seloken	Belgique, Brésil, Danemark, Finlande, Italie, Norvège, Suède



### Stabilité des solutions
















		1 mg/ml	25°C		230			3538
		0,4 mg/ml	24°C		36			238
		0.5 mg/ml	23-25°C		30			2267
		1 mg/ml	23-25°C		30			2267



### Compatibilités

Metoprolol tartrate : 0.5 mg/ml Alteplase : 0.5 mg/ml		240
Metoprolol tartrate : 1 mg/ml Amiodarone hydrochloride : 1.8 mg/ml		2346
Metoprolol tartrate : 1 mg/ml Amphotericin B cholesteryl sulfate complex : 0.83 mg/ml		921
Metoprolol tartrate : 1 mg/ml Argatroban : 1 mg/ml		1964
Metoprolol tartrate : 1 mg/ml Bivalirudin : 5 mg/ml		1944
Metoprolol tartrate Calcium gluconate		3644
Metoprolol tartrate : 0.4 mg/ml Cefepime dihydrochloride : 40 mg/ml		3879
Metoprolol tartrate : 1 mg/ml Ceftaroline fosamil : 2,22 mg/ml	RL	3249

		Metoprolol tartrate : 1 mg/ml Ceftaroline fosamil : 2,22 mg/ml		3249
		Metoprolol tartrate : 1 mg/ml Ceftobiprole medocaril sodium : 2 mg/ml		2269
		Metoprolol tartrate : 1 mg/ml Ceftobiprole medocaril sodium : 2 mg/ml	RL	2269
		Metoprolol tartrate : 0.4 mg/ml Ciprofloxacin lactate : 2 mg/ml		3879
		Metoprolol tartrate : 0.4 mg/ml Cisatracurium besylate : 2 mg/ml		3879
		Metoprolol tartrate : 1 mg/ml Diltiazem hydrochloride : 1 mg/ml		2346
		Metoprolol tartrate : 0.4 mg/ml Doripenem : 4.5 mg/ml		3879
		Metoprolol tartrate : 0.4 mg/ml Epinephrine hydrochloride : 128 µg/ml		3879
		Metoprolol tartrate Eptifibatide		3934
		Metoprolol tartrate : 1 mg/ml Eptifibatide : 0.75 mg/ml		2346
		Metoprolol tartrate : 0.4 mg/ml Esomeprazole sodium : 0.8 mg/ml		3879
		Metoprolol tartrate : 1 mg/ml Furosemide : 10 mg/ml		2346
		Metoprolol tartrate : 1 mg/ml Heparin sodium : 1000 UI/ml		2346
		Metoprolol tartrate : 0.4 mg/ml Human albumin : 250 mg/ml		3879
		Metoprolol tartrate : 0.4 mg/ml Hydrocortisone sodium succinate : 1 mg/ml		3879
		Metoprolol tartrate : 0.4 mg/ml Ibuprofen lysinate : 4 mg/ml		3879
		Metoprolol tartrate : 1 mg/ml Imipenem-Cilastatin / Relebactam : 5 mg/ml		4433
		Metoprolol tartrate : 0.4 mg/ml Levofloxacin : 5 mg/ml		3879
		Metoprolol tartrate : 0.4 mg/ml Levothyroxine : 0.4 µg/ml		3879
		Metoprolol tartrate : 1 mg/ml Lidocaine hydrochloride : 8 mg/ml		2346
		Metoprolol tartrate Magnesium sulfate		3838
		Metoprolol tartrate : 1 mg/ml Meropenem : 50 mg/ml		4319
		Metoprolol tartrate : 0.4 mg/ml Meropenem : 20 mg/ml		3879
		Metoprolol tartrate : 1 mg/ml Milrinone lactate : 0.2 mg/ml		2346
		Metoprolol tartrate : 1 mg/ml Morphine sulfate : 1 mg/ml		62
		Metoprolol tartrate : 1 mg/ml Nesiritide : 0.006 mg/ml		2346

		Metoprolol tartrate : 1 mg/ml Nitroglycerin : 0.2 mg/ml		2346
		Metoprolol tartrate : 1 mg/ml Nitroprusside sodium : 0.4 mg/ml		2346
		Metoprolol tartrate : 0.4 mg/ml Norepinephrine bitartrate : 0.128 mg/ml		3879
		Metoprolol tartrate : 0.4 mg/ml Paracetamol : 10 mg/ml		3879
		Metoprolol tartrate : 1 mg/ml Pethidine hydrochloride : 10 mg/ml		62
		Metoprolol tartrate : 1 mg/ml Procainamide hydrochloride : 8 mg/ml		2346
		Metoprolol tartrate : 1 mg/ml Sugammadex : 100 mg/ml		3372



## Voie d'administration



## Bibliographie

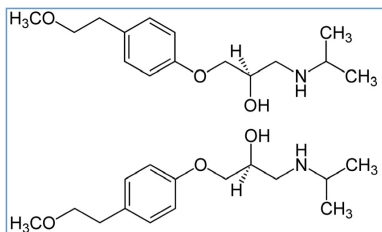
	Type	Source
62	Revue	Pugh CB, Pabis DJ, Rodriguez C. Visual compatibility of morphine sulfate and meperidine hydrochloride with other injectable drugs during simulated Y-site injection. Am J Hosp Pharm 1991 ; 48: 123-125.
238	Revue	Belliveau PP, Shea BF, Scavone JM. Stability of metoprolol tartrate in 5% dextrose injection or 0.9% sodium chloride injection. Am J Hosp Pharm 1993 ; 50: 950-952.
240	Revue	Lam XM, Ward CA, de C du M?e CPR. Stability and activity of alteplase with injectable drugs commonly used in cardiac therapy. Am J Health-Syst Pharm 1995 ; 52: 1904-1909.
921	Revue	Trissel LA, Gilbert DL, Martinez JF. Incompatibility and compatibility of amphotericin B cholesteryl sulfate complex with selected other drugs during simulated Y-site administration. Hosp Pharm 1998 ; 33: 284-292.
1944	Revue	Hartman CA, Faria CE, Mago K. Visual compatibility of bivalirudin with selected drugs. Am J Health-Syst Pharm 2004 ; 61: 1774.
1964	Revue	Hartman CA, Baroletti SA, Churchill WW et al. Visual compatibility of argatroban with selected drugs. Am J Health-Syst Pharm 2002 ; 59: 1784-1785.
2267	Revue	Kraft MD, Johnson CE, Chung C, Julian F. Stability of metoprolol tartrate injection 1 mg/ml undiluted and 0.5 mg/ml in 0.9% sodium chloride injection and 5% dextrose injection. Am J Health-Syst Pharm 2008 ; 65, 7: 636-638.

2269	Revue	Chan P, Bishop A, Kupiec TC, Trissel LA, Gole D, Jimidar IM, Vermeersch H. Compatibility of ceftobiprole medocaril with selected drugs during simulated Y-site administration. Am J Health-Syst Pharm 2008 ; 65, 16: 1545-1551.
2346	Revue	Newland A.M, Mauro V.F, Alexander K.S. Physical compatibility of metoprolol tartrate injection with selected cardiovascular agents Am J Health-Syst Pharm 2009 ; 66: 986-987.
3249	Revue	Singh BM, Dedhiya MG, Dinunzio J, Chan P, Kupiec TC, Trissel LA, Laudano JB. Compatibility of ceftaroline fosamil for injection with selected drugs during simulated Y-site administration. Am J Health-Syst Pharm 2011 ; 68: 2163-2169.
3372	Revue	Hanci V, Ali Kiraz H, Ömür D, Ekin S, Uyan B, Yurtlu B.S. Precipitation in Gallipoli: Sugammadex / Amiodarone & Sugammadex / Dobutamine & Sugammadex / Protamine. Rev Bras Anesthesiol 2013 ; 63, 1: 163-166.
3538	Revue	Gilcher Th, Heeb R M, Krämer I. Physikalisch-chemische Stabilität einer Metoprolol-Injektionslösung 1 mg/ml, 50 ml. Krankenhauspharmazie 2013 ; 11: 524-525.
3644	Laboratoire	Calcium gluconate® - Summary of Product Characteristics Hameln Pharmaceuticals 2010
3838	Laboratoire	Magnesium Sulphate - Summary of Product Characteristics Martindale Pharmaceuticals Ltd 2007
3879	Revue	Foushee Jaime A, Meredith Pmichaele, Fox Laura M, Grace Edward E. Y-site Physical Compatibility of Beta-blocker Infusions with Intensive Care Unit Admixtures. Int J Pharm Compound 2016 ; 20, 4 : 328-332.
3934	Laboratoire	Eptifibatide (Integrilin®) - Résumé des caractéristiques du produit GlaxoSmithKline Laboratoire 2016
4319	Revue	Lessard J-J, Caron E, Schérer H, Forest J-M, Leclair G. Compatibility of Y-site Injection of Meropenem Trihydrate With 101 Other Injectable Drugs. Hosp Pharm 2020 ; 55, 5: 332-337.
4433	Revue	Ghazi I.M, El Nekidy W.S, Sood A, Dulku A, Patel R, Patel K. Y-site Administration of Imipenem/Cilastatin/ Relebactam With Common Intravenous Medications Clin Ther 2020 ; 42, 3: 475-485.

# Stabilis



## Metoprolol tartrate



### Stabilité des préparations

		1000 mg Betaloc®	Poudre adragante 3000 mg Eau chloroformée 2.5 ml Sirop simple 12.5 ml Eau distillée >> 100 ml	21-25°C		90		2556
		500 mg ®=?	Eau purifiée >> 100 ml	25°C		16		653
		1000 mg Betaloc®	Poudre adragante 3000 mg Eau chloroformée 2.5 ml Sirop simple 12.5 ml Eau distillée >> 100 ml	5-7°C		90		2556
		1,5 g ® = ?	SyrSpend SF PH4® >> 150 ml	2-8°C		90		3994
		1,5 g ® = ?	SyrSpend SF PH4® >> 150 ml	20-25°C		90		3994
		1200 mg ®=? (Mylan Pharmaceutical)	OraPlus® / OraSweet® (1:1) >> 120 ml	25°C		60		2435
		1200 mg ®=? (Mylan Pharmaceutical)	OraPlus® / OraSweet SF® (1:1) >> 120 ml	25°C		60		2435
		1200 mg ®=? (Mylan Pharmaceutical)	Sirop cerise / sirop simple (1:4) >> 120 ml	25°C		60		2435
		75 mg ®=? (Careco Pharmaceutical)	Sorbitol 17.5g Eau purifiée >> 60 ml	4-8°C		56		2931
		1200 mg ®=? (Mylan Pharmaceutical)	OraPlus® / OraSweet® (1:1) >> 120 ml	5°C		60		2435
		1200 mg ®=? (Mylan Pharmaceutical)	OraPlus® / OraSweet SF® (1:1) >> 120 ml	5°C		60		2435
		1200 mg ®=? (Mylan Pharmaceutical)	Sirop cerise / sirop simple (1:4) >> 120 ml	5°C		60		2435



## Bibliographie

	Type	Source
653	Revue	Das Gupta V. Quantification of metoprolol tartrate and propranolol hydrochloride in pharmaceutical dosage forms : stability of metoprolol in aqueous mixture. Int J Pharm Compound 1997 ; 1: 125-127.
2435	Revue	Allen LV, Jr, Erickson MA, Stability of labetalol hydrochloride, metoprolol tartrate, verapamil hydrochloride, and spironolactone with hydrochlorothiazide in extemporaneously compounded oral liquids Am J Health-Syst Pharm 1996 ; 53: 2304-2309.
2556	Revue	Peterson GM, Meaney MF, Reid CA. Stability of extemporaneously prepared mixtures of metoprolol and spironolactone. Aust J Hosp Pharm 1989 ; 19.: 344-346.
2931	Revue	Yamreudeewong W, Dolence EK, Pahl D. Stability of two extemporaneously prepared oral metoprolol and carvedilol liquids. Hosp Pharm 2006 ; 41: 254-259.
3994	Revue	De Oliveira Ferreira A, Polonini H C, Loures da Silva S, Cerqueira de Melo V Augusto, de Andrade L, Fernandes Brand?o Marcos A. Stability of Alprazolam, Atropine Sulfate, Glutamine, Levofloxacin, Metoprolol Tartrate, Nitrofurantoin, Ondansetron Hydrochloride, Oxandrolone, Pregabalin, and Riboflavin in SyrSpend SF pH4 Oral Suspensions. Int J Pharm Compound 2017 ; 3: 255-263



# Dictionnaire

Antiarythmique	Injectable
Noms commerciaux	Stabilité des solutions
Contenant	Molécule
Concentration	Température
Conservation	Durée de stabilité
Biosimilaire	Données conflictuelles
Bibliographie	Verre
Chlorure de sodium 0,9%	A l'abri de la lumière
Jour	Polyvinyl chlorure
NaCl 0,9% ou glucose 5%	Lumière
Heure	Non précisé
Non précisée	Aucun
Compatibilités	Molécule
Solvant	Compatible
Eau pour préparation injectable	Glucose 5%
Précipitation immédiate	Incompatible
Incompatibilité non précisée	<b>RL</b> Ringer lactate
Instabilité chimique	Précipitation en 8 heures
Voie d'administration	Intraveineuse
Bibliographie	Solution buvable
Stabilité des préparations	Origine
Excipient	Comprimés
Flacon plastique	Poudre
Dictionnaire	