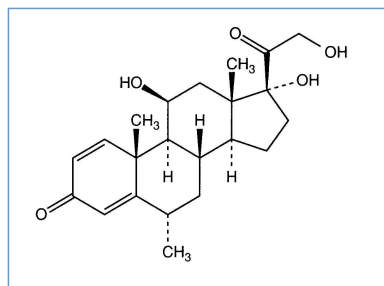


# Stabilis



## Methylprednisolone sodium succinate



Noms commerciaux

Methylprednisolone	France
Metypred	Pologne
Prednol	Turquie
Solomet	Finlande
Solu-Medrol	Afrique du sud, Autriche, Brésil, Canada, Croatie, Danemark, Etats Unis d'Amérique, Finlande, France, Italie, Norvège, Pays bas, Pologne, Portugal, Slovénie, Suède, Suisse
Solu-Medrone	Grande Bretagne, Irlande
Urbason	Autriche, Espagne, Italie



### Stabilité des solutions

		4 mg/ml	22°C		24			212
		4 mg/ml	4°C		7			212
		4,6 mg/ml	-20°C		365			22
		0,125 mg/ml	22°C		24			1067
		0,125 mg/ml	4°C		24			1067
		1 mg/ml	4°C		7			1922
		10 mg/ml	23°C		2			1922
		10 mg/ml	4°C		21			1922
		10 mg/ml	25°C		4			1627
		10 mg/ml	5°C		21			1627



## Stabilité en mélange

		0,5 & 2 mg/ml	37°C		Theophylline : 0,4 mg/ml	12		391
		0,5 & 2 mg/ml	37°C		Theophylline : 4 mg/ml	24		391
		2,26 mg/ml	22°C		Granisetron hydrochloride : 0,056 mg/ml	3		29
		0,04 mg/ml	?		Ranitidine hydrochloride : 0,05 mg/ml	24		210
		2 mg/ml	?		Ranitidine hydrochloride : 0,05 & 2 mg/ml	24		210
		0,04 mg/ml	?		Ranitidine hydrochloride : 2 mg/ml	48		210
		0,4 & 1,25 mg/ml	24°C		Cimetidine hydrochloride : 3 mg/ml	24		211
		0,04 & 2 mg/ml	?		Ranitidine hydrochloride : 0,05 & 2 mg/ml	48		210
		2,4 mg/ml	20°C-25°C		Ondansetron hydrochloride : 0,16 mg/ml	24		2012
		2,4 mg/ml	4°C		Ondansetron hydrochloride : 0,16 mg/ml	48		2012
		6 mg/ml	22°C		Granisetron hydrochloride : 0,15 mg/ml	3		29
		0,8 mg/ml	24-26°C		Methotrexate sodium : 5,3 mg/ml	6		4641
		0,5 mg/ml	24-26°C		Methotrexate sodium : 3 mg/ml	6		4641
		0,51 mg/ml	5°C		Methotrexate sodium : 1,54 mg/ml Cytarabine : 3,85 mg/ml	12		3275
		1,2 mg/ml	20°C-23°C		Topotecan : 0,028 mg/ml	4		1026



## Compatibilités

		Methylprednisolone sodium succinate : 0.8 mg/ml Aciclovir sodium : 5 mg/ml
		Methylprednisolone sodium succinate : 5 mg/ml Allopurinol sodium : 3 mg/ml
		Methylprednisolone sodium succinate : 40 mg/ml Alprostadil : 15 µg/ml
		Methylprednisolone sodium succinate : 5 mg/ml Amifostine : 10 mg/ml
		Methylprednisolone sodium succinate : 0,5 & 2 mg/ml Aminophylline : 1 mg/ml
		Methylprednisolone sodium succinate : 125 mg/ml Amiodarone hydrochloride : 6 mg/ml
		Methylprednisolone sodium succinate Amoxicillin sodium / clavulanic acid
		Methylprednisolone sodium succinate : 125 mg/ml Amoxicillin sodium / clavulanic acid : 100/10 mg/ml

		Methylprednisolone sodium succinate : 5 mg/ml Amphotericin B cholesteryl sulfate complex : 0.83 mg/ml		921
		Methylprednisolone sodium succinate : 5 mg/ml Amsacrine : 1 mg/ml		253
		Methylprednisolone sodium succinate : 5 mg/ml Anidulafungin : 0.5 mg/ml		1982
		Methylprednisolone sodium succinate : 0,2 mg/ml Atenolol : 0,1 mg/ml		4698
		Methylprednisolone sodium succinate : 5 mg/ml Aztreonam : 40 mg/ml		99
		Methylprednisolone sodium succinate : 5 mg/ml Bivalirudin : 5 mg/ml		1713
		Methylprednisolone sodium succinate : 5 mg/ml Blinatumomab : 0.125 & 0.375 µg/ml		3976
		Methylprednisolone sodium succinate : 500 mg/ml Caffeine : 10 mg/ml		3964
		Methylprednisolone sodium succinate : 5 mg/ml Caspofungin acetate : 0,7 mg/ml		2247
		Methylprednisolone sodium succinate : 5 mg/ml Ceftaroline fosamil : 2,22 mg/ml		3249
		Methylprednisolone sodium succinate : 5 mg/ml Ceftaroline fosamil : 2,22 mg/ml	RL	3249
		Methylprednisolone sodium succinate : 5 mg/ml Ceftobiprole medocaril sodium : 2 mg/ml		2269
		Methylprednisolone sodium succinate : 5 mg/ml Ceftobiprole medocaril sodium : 2 mg/ml	RL	2269
		Methylprednisolone sodium succinate : 20 mg/ml Ceftolozane / tazobactam : 10/5 mg/ml		3828
		Methylprednisolone sodium succinate : 0.4 mg/ml Cimetidine hydrochloride : 3 mg/ml		1201
		Methylprednisolone sodium succinate : 62.5 mg/ml Ciprofloxacin lactate : 2 mg/ml		288
		Methylprednisolone sodium succinate : 5 mg/ml Cisatracurium besylate : 2 & 5 mg/ml		299
		Methylprednisolone sodium succinate : 5 mg/ml Cisatracurium besylate : 0.1 mg/ml		299
		Methylprednisolone sodium succinate : 5 mg/ml Cladribine : 0.015 mg/ml		1496
		Methylprednisolone sodium succinate : 5 mg/ml Cladribine : 0.5 mg/ml		1496
		Methylprednisolone sodium succinate : 0,2 mg/ml Clonidine hydrochloride : 0,0125 mg/ml		4698
		Methylprednisolone sodium succinate : 62.5 mg/ml Cloxacillin sodium : 100 mg/ml		3012
		Methylprednisolone sodium succinate Cytarabine		3580
		Methylprednisolone sodium succinate : 5 mg/ml Cytarabine : 16 mg/ml		132
		Methylprednisolone sodium succinate Daunorubicin hydrochloride		3604
		Methylprednisolone sodium succinate : 10 mg/ml Defibrotide : 8 mg/ml		3728

		Methylprednisolone sodium succinate : 10 mg/ml Defibrotide : 8 mg/ml		3728
		Methylprednisolone sodium succinate : 5 mg/ml Dexmedetomidine : 4 µg/ml		1712
		Methylprednisolone sodium succinate : 2.5 >> 62.5 mg/ml Diltiazem hydrochloride : 1 mg/ml		198
		Methylprednisolone sodium succinate : 2.5 >> 62.5 mg/ml Diltiazem hydrochloride : 5 mg/ml		198
		Methylprednisolone sodium succinate : 5 mg/ml Docetaxel : 0.9 mg/ml		1754
		Methylprednisolone sodium succinate : 0.5 mg/ml Dopamine hydrochloride : 0.8 mg/ml		738
		Methylprednisolone sodium succinate : 5 mg/ml Dopamine hydrochloride : 0.8 mg/ml		132
		Methylprednisolone sodium succinate : 5 mg/ml Doripenem : 5 mg/ml		2262
		Methylprednisolone sodium succinate : 5 mg/ml Doxorubicin hydrochloride liposome peg : 0.4 mg/ml		251
		Methylprednisolone sodium succinate : 0.8 mg/ml Enalaprilate : 0.05 mg/ml		1315
		Methylprednisolone sodium succinate : 5 mg/ml Etoposide phosphate : 5 mg/ml		1410
		Methylprednisolone sodium succinate : 40 mg/ml Famotidine		397
		Methylprednisolone sodium succinate : 1 mg/ml Famotidine : 0.2 mg/ml		398
		Methylprednisolone sodium succinate : 5 mg/ml Fenoldopam mesylate : 80 µg/ml		1803
		Methylprednisolone sodium succinate : 5 mg/ml Filgrastim : 30 µg/ml		244
		Methylprednisolone sodium succinate : 5 mg/ml Fludarabine phosphate : 1 mg/ml		492
		Methylprednisolone sodium succinate : 0,7 mg/ml Fosaprepitant dimeglumine : 1 mg/ml		3459
		Methylprednisolone sodium succinate : 20 mg/ml Fosfomycin : 30 mg/ml		4055
		Methylprednisolone sodium succinate : 5 mg/ml Gemcitabine hydrochloride : 10 mg/ml		1423
		Methylprednisolone sodium succinate : 2.26 & 6 mg/ml Granisetron hydrochloride : 0.056 & 0.15 mg/ml		29
		Methylprednisolone sodium succinate : 5 mg/ml Granisetron hydrochloride : 0.05 mg/ml		182
		Methylprednisolone sodium succinate : 5 mg/ml Heparin sodium : 100 UI/ml		132
		Methylprednisolone sodium succinate : 2.5 mg/ml Heparin sodium : 50 UI/ml		317
		Methylprednisolone sodium succinate : 5 mg/ml Hetastarch : 60 mg/ml		1721
		Methylprednisolone sodium succinate : 5 mg/ml Imipenem-Cilastatin / Relebactam : 5 mg/ml		4433
		Methylprednisolone sodium succinate : 10 mg/ml Iohexol : 300 mg I/ml		1085

		Methylprednisolone sodium succinate : 10 mg/ml Ioxaglate : 320 mg I/ml	∅	1085
		Methylprednisolone sodium succinate : 20 mg/ml Isavuconazonium sulfate : 1.5 mg/ml		3829
		Methylprednisolone sodium succinate : 0.4 mg/ml Ketoprofene : 3.2 mg/ml		1847
		Methylprednisolone sodium succinate : 5 mg/ml Lansoprazole : 0.55 mg/ml		1625
		Methylprednisolone sodium succinate : 5 mg/ml Linezolid : 2 mg/ml	∅	1925
		Methylprednisolone sodium succinate : 5 mg/ml Melphalan : 0.1 mg/ml		169
		Methylprednisolone sodium succinate : 62.5 mg/ml Meropenem : 50 mg/ml		4319
		Methylprednisolone sodium succinate : 40 mg/ml Midazolam hydrochloride : 1 mg/ml		176
		Methylprednisolone sodium succinate : 0.1 >> 9 mg/ml Morphine hydrochloride : <10 mg/ml		1866
		Methylprednisolone sodium succinate : 5 mg/ml		301
		Methylprednisolone sodium succinate : 5 mg/ml Metronidazole : 5 mg/ml		132
		Methylprednisolone sodium succinate : 0.1 >> 9 mg/ml Morphine hydrochloride : 10 >> 50 mg/ml		1866
		Methylprednisolone sodium succinate : 2.5 mg/ml Morphine sulfate : 1 mg/ml		62
		Methylprednisolone sodium succinate : 20 mg/ml Plazomicin sulfate : 24 mg/ml		4145
		Methylprednisolone sodium succinate : 62,5 mg/ml	RL	4603
		Methylprednisolone sodium succinate : 5 mg/ml Paclitaxel : 1.2 mg/ml		248
		Methylprednisolone sodium succinate : 62.5 mg/ml Paracetamol : 10 mg/ml		4742
		Methylprednisolone sodium succinate : 5 mg/ml Pemetrexed disodium : 20 mg/ml		1953
		Methylprednisolone sodium succinate Penicillin G sodium		3585
		Methylprednisolone sodium succinate : 2.5 mg/ml Pethidine hydrochloride : 10 mg/ml		62
		Methylprednisolone sodium succinate : 5 mg/ml Piperacillin sodium / tazobactam : 40/5 mg/ml		81
		Methylprednisolone sodium succinate : 5 mg/ml		1415
		Methylprednisolone sodium succinate : 5 mg/ml Ondansetron hydrochloride : 1 mg/ml		334
		Methylprednisolone sodium succinate : 0.058 >> 0.080 mg/ml		1868
		Methylprednisolone sodium succinate : 0.8 mg/ml Nicardipine hydrochloride : 0.1 mg/ml		1490
		Methylprednisolone sodium succinate : 2,4 mg/ml Ondansetron hydrochloride : 0,16 mg/ml		2012
		Methylprednisolone sodium succinate : 2,4 mg/ml Ondansetron hydrochloride : 0,16 mg/ml		2012

		Methylprednisolone sodium succinate : 5 mg/ml Oxaliplatin : 0,5 mg/ml		1662
		Methylprednisolone sodium succinate : 5 mg/ml Palonosetron hydrochloride : 50 µg/ml		2107
		Methylprednisolone sodium succinate : 62.5 mg/ml Paracetamol : 10 mg/ml		3571
		Methylprednisolone sodium succinate : 20 mg/ml Posaconazole : 1,2 mg/ml		4521
		Methylprednisolone sodium succinate : 0,4 mg/ml Posaconazole : 1,2 mg/ml		4521
		Methylprednisolone sodium succinate : 40 mg/ml Potassium chloride : 40 mEq/l		730
		Methylprednisolone sodium succinate : 40 mg/ml Potassium chloride : 40 mEq/l	RL	730
		Methylprednisolone sodium succinate : 63 mg/ml Propofol		660
		Methylprednisolone sodium succinate : 5 mg/ml Propofol : 10 mg/ml		300
		Methylprednisolone sodium succinate : 0.04 & 2 mg/ml Ranitidine hydrochloride : 0.05 & 2 mg/ml		210
		Methylprednisolone sodium succinate : 5 mg/ml Remifentanil hydrochloride : 25 & 250 µg/ml		59
		Methylprednisolone sodium succinate Rocuronium bromide		3564
		Methylprednisolone sodium succinate : 5 mg/ml Sargramostim : 10 µg/ml		335
		Methylprednisolone sodium succinate : 20 mg/ml Sulbactam/durlobactam : 15/15 mg/ml		4801
		Methylprednisolone sodium succinate : 0,8 mg/ml Tacrolimus : 1000 µg/ml		479
		Methylprednisolone sodium succinate : 20 mg/ml Tedizolid phosphate : 0.8 mg/ml		3827
		Methylprednisolone sodium succinate : 5 mg/ml Telavancin hydrochloride : 7.5 mg/ml	RL	3254
		Methylprednisolone sodium succinate : 5 mg/ml Telavancin hydrochloride : 7,5 mg/ml		3254
		Methylprednisolone sodium succinate : 5 mg/ml Telavancin hydrochloride : 7.5 mg/ml		3254
		Methylprednisolone sodium succinate : 5 mg/ml Teniposide : 0.1 mg/ml		905
		Methylprednisolone sodium succinate : 2.5 mg/ml Theophylline : 4 mg/ml		317
		Methylprednisolone sodium succinate : 5 mg/ml Thiotepa : 1 mg/ml		249
		Methylprednisolone sodium succinate : 2.4 mg/ml Topotecan : 0.056 mg/ml		1026
		Methylprednisolone sodium succinate : 5 mg/ml Valproic acid : 2 & 20 mg/ml		4428
		Methylprednisolone sodium succinate : 0.25 mg/ml Verapamil hydrochloride : 0.08 mg/ml		1057
		Methylprednisolone sodium succinate : 5 mg/ml Vinorelbine tartrate : 1 mg/ml		84



## Voie d'administration



## Bibliographie

	Type	Source
3	Revue	Trissel LA, Martinez JF. Compatibility of amifostine with selected drugs during simulated Y-site administration. Am J Health-Syst Pharm 1995 ; 52: 2208-2212.
22	Revue	Sewell GJ, Palmer AJ. The chemical and physical stability of three intravenous infusions subjected to frozen storage and microwave thawing. Int J Pharm 1991 ; 72: 57-63.
29	Revue	Pinguet F, Rouanet P, Martel P, Fabbro M, Salabert D, Astre C. Compatibility and stability of granisetron, dexamethasone, and methylprednisolone in injectable solutions. J Pharm Sci 1995 ; 84: 267-268.
59	Revue	Trissel LA, Gilbert DL, Martinez JF, Kim MC. Compatibility of remifentanyl hydrochloride with selected drugs during simulated Y-site administration. Am J Health-Syst Pharm 1997 ; 54: 2192-2196.
62	Revue	Pugh CB, Pabis DJ, Rodriguez C. Visual compatibility of morphine sulfate and meperidine hydrochloride with other injectable drugs during simulated Y-site injection. Am J Hosp Pharm 1991 ; 48: 123-125.
81	Revue	Trissel LA, Martinez JF. Compatibility of piperacillin sodium plus tazobactam with selected drugs during simulated Y-site injection. Am J Hosp Pharm 1994 ; 51: 672-678.
84	Revue	Trissel LA, Martinez JF. Visual, turbidimetric, and particle-content assessment of compatibility of vinorelbine tartrate with selected drugs during simulated Y-site injection. Am J Hosp Pharm 1994 ; 51: 495-499.
99	Revue	Trissel LA, Martinez JF. Compatibility of aztreonam with selected drugs during simulated Y-site administration. Am J Health-Syst Pharm 1995 ; 52: 1086-1090.
132	Revue	Najari Z, Rusho WJ. Compatibility of commonly used bone marrow transplant drugs during Y-site delivery. Am J Health-Syst Pharm 1997 ; 54: 181-184.
169	Revue	Trissel LA, Martinez JF. Physical compatibility of melphalan with selected drugs during simulated Y-site administration. Am J Hosp Pharm 1993 ; 50: 2359-2363.
176	Revue	Mantong ML, Marquardt ED. Visual compatibility of midazolam hydrochloride with selected drugs during simulated Y-site injection. Am J Health-Syst Pharm 1995 ; 52: 2567-2568.
182	Revue	Trissel LA, Gilbert DL, Martinez JF. Compatibility of granisetron hydrochloride with selected drugs during simulated Y-site administration. Am J Health-Syst Pharm 1997 ; 54: 56-60.
198	Revue	Gayed AA, Kheshary PR, Hinkle RL. Visual compatibility of diltiazem injection with various diluents and medications during simulated Y-site injection. Am J Health-Syst Pharm 1995 ; 52: 516-520.

210	Revue	Stewart JT, Warren FW, King AD. Stability of ranitidine hydrochloride and seven medications. Am J Hosp Pharm 1994 ; 51: 1802-1807.
211	Revue	Strom JG, Miller SW. Stability and compatibility of methylprednisolone sodium succinate and cimetidine hydrochloride in 5% dextrose injection. Am J Hosp Pharm 1991 ; 48: 1237-1241.
212	Revue	Nahata MC, Morosco RS, Hipple TF. Stability of diluted methylprednisolone sodium succinate injection at two temperatures. Am J Hosp Pharm 1994 ; 51: 2157-2159.
244	Revue	Trissel LA, Martinez JF. Compatibility of filgrastim with selected drugs during simulated Y-site administration. Am J Hosp Pharm 1994 ; 51: 1907-1913.
248	Revue	Trissel LA, Martinez JF. Turbidimetric assessment of the compatibility of taxol with 42 other drugs during simulated Y-site injection. Am J Hosp Pharm 1993 ; 50: 300-304.
249	Revue	Trissel LA, Martinez JF. Compatibility of thiotepa (lyophilized) with selected drugs during simulated Y-site administration. Am J Health-Syst Pharm 1996 ; 53: 1041-1045.
251	Revue	Trissel LA, Gilbert DL, Martinez JF. Compatibility of doxorubicin hydrochloride liposome injection with selected other drugs during simulated Y-site administration. Am J Health-Syst Pharm 1997 ; 54: 2708-2713.
253	Revue	Trissel LA, Chandler SW, Folstad JT. Visual compatibility of amsacrine with selected drugs during simulated Y-site injection. Am J Hosp Pharm 1990 ; 47: 2525-2528.
288	Revue	Cervenka P, Dejong DJ, Butler BL, Monzingo MD. Visual compatibility of injectable ciprofloxacin lactate with selected injectable drugs during simulated Y-site administration. Hosp Pharm 1992 ; 27: 957-958,961-962.
299	Revue	Trissel LA, Martinez JF, Gilbert DL. Compatibility of cisatracurium besylate with selected drugs during simulated Y-site administration. Am J Health-Syst Pharm 1997 ; 54: 1735-1741.
300	Revue	Trissel LA, Gilbert DL, Martinez JF. Compatibility of propofol injectable emulsion with selected drugs during simulated Y-site administration. Am J Health-Syst Pharm 1997 ; 54: 1287-1292.
301	Revue	Trissel LA, Gilbert DL, Martinez JF, Baker MB, Walter WV, Mirtallo JM. Compatibility of parenteral nutrient solutions with selected drugs during simulated Y-site administration. Am J Health-Syst Pharm 1997 ; 54: 1295-1300.
307	Revue	Trissel LA, Martinez JF. Compatibility of allopurinol sodium with selected drugs during simulated Y-site administration. Am J Hosp Pharm 1994 ; 51: 1792-1799.
317	Revue	Kershaw BP, Monnier HL, Mason JH. Visual compatibility of premixed theophylline or heparin with selected drugs for IV administration. Am J Hosp Pharm 1993 ; 50: 1360-1362.
334	Revue	Trissel LA, Tramonte SM, Grilley BJ. Visual compatibility of ondansetron hydrochloride with selected drugs during simulated Y-site injection. Am J Hosp Pharm 1991 ; 48: 988-992.
335	Revue	Trissel LA, Bready BB, Kwan JW, Santiago NM. Visual compatibility of sargramostim with selected antineoplastic agents, anti-infectives, or other drugs during simulated Y-site injection. Am J Hosp Pharm 1992 ; 49: 402-406.



336	Revue	Forman JK, Lachs JR, Souney PF. Visual compatibility of acyclovir sodium with commonly used intravenous drugs during simulated Y-site injection. Am J Hosp Pharm 1987 ; 44: 1408-1409.
390	Revue	Johnson CE, Cohen IA, Craft DA, Lizer MH. Compatibility of aminophylline and methylprednisolone sodium succinate intravenous admixtures. Am J Hosp Pharm 1986 ; 43: 1482-1485.
391	Revue	Johnson CE, Cohen IA, Michelini TJ, McMahon RE. Compatibility of premixed theophylline and methylprednisolone sodium succinate intravenous admixtures. Am J Hosp Pharm 1987 ; 44: 1620-1624.
397	Revue	Fong PA, Ward J. Visual compatibility of intravenous famotidine with selected drugs. Am J Hosp Pharm 1989 ; 46: 125-126.
398	Revue	Jay GT, Fanikos J, Souney PF. Visual compatibility of famotidine with commonly used critical-care medications during simulated Y-site injection. Am J Hosp Pharm 1988 ; 45: 1556-1557.
479	Revue	Min DI, Brown T, HWang GC. Visual compatibility of tacrolimus with commonly used drugs during simulated Y-site injection. Am J Hosp Pharm 1992 ; 49: 2964-2966.
492	Revue	Trissel LA, Parks NPT, Santiago NM. Visual compatibility of fludarabine phosphate with antineoplastic drugs, anti-infectives, and other selected drugs during simulated Y-site injection. Am J Hosp Pharm 1991 ; 48: 2186-2189.
660	Revue	Michaels MR, Stauffer GL, Haas DP. Propofol compatibility with other intravenous drug products - Two new methods of evaluating IV emulsion compatibility. Ann Pharmacotherapy 1996 ; 30: 228-232.
730	Revue	Allen LV, Saul Levinson R, Phisutsinthop D. Compatibility of various admixtures with secondary additives at Y-injection site of intravenous administration sets. Am J Hosp Pharm 1977 ; 34: 939-943.
738	Revue	Gardella LA, Kesler H, Amann A, Carter JE. Intropin (dopamine hydrochloride) intravenous admixture compatibility. Part 3: Stability with miscellaneous additives. Am J Hosp Pharm 1978 ; 35: 581-584.
905	Revue	Trissel LA, Martinez JF. Screening teniposide for Y-site physical incompatibilities. Hosp Pharm 1994 ; 29: 1010-1017.
921	Revue	Trissel LA, Gilbert DL, Martinez JF. Incompatibility and compatibility of amphotericin B cholesteryl sulfate complex with selected other drugs during simulated Y-site administration. Hosp Pharm 1998 ; 33: 284-292.
1026	Revue	Mayron D, Gennaro AR. Stability and compatibility of topotecan hydrochloride with selected drugs. Am J Health-Syst Pharm 1999 ; 56: 875-881.
1057	Revue	Cutie MR. Compatibility of verapamil hydrochloride injection with commonly used additives. Am J Hosp Pharm 1983 ; 40: 1205-1207.
1067	Revue	Zeidler C, Dettmering D, Schrammel W, Spieteller M. Compatibility of various drugs used in intensive care medicine in polyethylene, PVC and glass infusion containers. EJHP 1999 ; 5: 106-110.
1085	Revue	Irving HD, Burbridge BE. Incompatibility of contrast agents with intravascular medications. Radiology 1989 ; 173: 91-92.

1201	Revue	Yuhas EM, Lofton FT, Rosenberg HA, Mayron D, Baldinus JG. Cimetidine hydrochloride compatibility III: Room temperature stability in drug admixtures. Am J Hosp Pharm 1981 ; 38: 1919-1922.
1315	Revue	Halpern NA, Colucci RD, Alicea M, Greenstein R. Visual compatibility of enalaprilat with commonly used critical care medications during simulated Y-site injection. Int J Pharm Clin Pharmacol Ther Tox 1989 ; 27: 294-297.
1410	Revue	Trissel LA, Martinez JF, Simmons M. Compatibility of etoposide phosphate with selected drugs during simulated Y-site injection. J Am Pharm Assoc 1999 ; 39: 141-145.
1415	Revue	Trissel L.A, Gilbert D.L, Martinez J.F, Baker M.B, Walter W.V, Mirtallo J.M. Compatibility of medications with 3-in-1 parenteral nutrition admixtures. JPEN 1999 ; 23: 67-74.
1423	Revue	Trissel LA, Martinez JF, Gilbert DL. Compatibility of gemcitabine hydrochloride with 107 selected drugs during simulated Y-site injection. J Am Pharm Assoc 1999 ; 39: 514-518.
1490	Revue	Halpern NA, Colucci RD, Alicea M, Greenstein R. The compatibility of nicardipine hydrochloride injection with various ICU medications during simulated Y-site injection. Int J Pharm Clin Pharmacol Ther Tox 1989 ; 27: 250-254.
1496	Revue	Trissel LA, Martinez JF, Gilbert DL. Screening cladribine for Y-site physical compatibility with selected drugs. Hosp Pharm 1996 ; 31: 1425-1428.
1611	Revue	Chalmers JR, Bobek MB, Militello MA. Visual compatibility of amiodarone hydrochloride injection with various intravenous drugs. Am J Health-Syst Pharm 2001 ; 58: 504-506.
1625	Revue	Trissel LA, Saenz C, Williams YW, Ingram D. Incompatibilities of lansoprazole injection with other drugs during simulated Y-site coadministration. Int J Pharm Compound 2001 ; 5: 314-321.
1627	Revue	Das Gupta V. Chemical stability of methylprednisolone sodium succinate after reconstitution in 0.9% sodium chloride injection and storage in polypropylene syringes. Int J Pharm Compound 2001 ; 5: 148-150.
1662	Revue	Trissel LA, Saenz CA, Ingram DS, Ogundele AB. Compatibility screening of oxaliplatin during simulated Y-site administration with other drugs. J Oncol Pharm Practice 2002 ; 8: 33-37.
1712	Revue	Trissel LA, Saenz CA. Compatibility screening of Precedex during simulated Y-site administration with other drugs. Int J Pharm Compound 2002 ; 6: 230-233.
1713	Revue	Trissel LA, Saenz CA. Compatibility screening of bivalirudin during simulated Y-site administration with other drugs. Int J Pharm Compound 2002 ; 6: 311-315.
1721	Revue	Trissel LA, Williams KY, Baker MB. Compatibility screening of Hextend during simulated Y-site administration with other drugs. Int J Pharm Compound 2001 ; 5: 69-72.
1754	Revue	Trissel LA, Gilbert DL, Wolkin AC. Compatibility of docetaxel with selected drugs during simulated Y-site administration. Int J Pharm Compound 1999 ; 3: 241-244.
1803	Revue	Trissel, LA, Saenz CA, Ogundele OB, Ingram D, Baker MB. Compatibility of fenoldopam mesylate with other drugs during simulated Y-site administration. Am J Health-Syst Pharm 2003 ; 60: 80-85.

1847	Revue	Anacardo R, Perilli O, Bartolini S, Gentile MM, Mazzeo P, Carlucci G. Physicochemical compatibility between ketoprofen kysine salt injections (Artrosilene®) and pharmaceutical products frequently used for combined therapy by intravenous administration. J Pharm Biomed Anal 2003 ; 32, 6: 1235-1241.
1866	Revue	Vermeire A, Remon JP. Compatibility and stability of morphine in binary admixtures with haloperidol, midazolam, dexamethasone or methylprednisolone. Int J Pharm 1998 ; 174: 157-177.
1868	Revue	Husson E, Crauste-Manciet S, Hadj-Salah E, Segier JC, Broissard D. Stabilité galénique de mélanges commercialisés de nutrition parentérale en présence de médicaments: médicaments dans le mélange. Nutr Clin Metab 2003 ; 17: 8-14.
1922	Revue	Trissel LA, Zhang Y. Stability of methylprednisolone sodium succinate in autodose infusion system bags. J Am Pharm Assoc 2002 ; 42: 868-870.
1925	Revue	Trissel LA, Williams KY, Gilbert DL. Compatibility screening of linezolid injection during simulated Y-site administration with other drugs and infusion solutions. J Am Pharm Assoc 2000 ; 40: 515-519.
1953	Revue	Trissel LA, Saenz CA, Ogundele AB, Ingram DS. Physical compatibility of pemetrexed disodium with other drugs during simulated Y-site administration. Am J Health-Syst Pharm 2004 ; 61: 2289-2293.
1982	Revue	Trissel LA, Ogundele AB. Compatibility of anidulafungin with other drugs during simulated Y-site administration. Am J Health-Syst Pharm 2005 ; 62: 834-837.
2012	Revue	Bougouin C, Thelcide C, Crespin-Maillard F, Maillard C, Kinowski JM, Favier M. Compatibility of ondansetron hydrochloride and methylprednisolone sodium succinate in multilayer polyolefin containers. Am J Health-Syst Pharm 2005 ; 62: 2001-2005.
2107	Revue	Trissel LA, Zhang Y, Xu QA. Physical and chemical stability of palonosetron hydrochloride with dacarbazine and with methylprednisolone sodium succinate during simulated Y-site administration. Int J Pharm Compound 2006 ; 10: 234-236.
2247	Revue	Chan P, Heatherly K, Kupiec T.C, Trissel L.A. Compatibility of caspofungin acetate injection with other drugs during simulated Y-site coadministration. Int J Pharm Compound 2008 ; 12, 3: 276-278.
2262	Revue	Brammer MK, Chan P, Heatherly K, Trusley C, Kupiec TC, Trissel LA, Psathas PA, Gilmor T, Schaufelberger D. Compatibility of doripenem with other drugs during simulated Y-site administration Am J Health-Syst Pharm 2008 ; 65: 1261-1265.
2269	Revue	Chan P, Bishop A, Kupiec TC, Trissel LA, Gole D, Jimidar IM, Vermeersch H. Compatibility of ceftobiprole medocaril with selected drugs during simulated Y-site administration. Am J Health-Syst Pharm 2008 ; 65, 16: 1545-1551.
3012	Revue	Sullivan T, Forrest J.M, Leclair G. Compatibility of Cloxacillin Sodium with Selected Intravenous Drugs During Simulated Y-Site Administration Hosp Pharm 2015 ; 50, 3: 214-220.
3201	Revue	Dice JE. Physical compatibility of alprostadil with commonly used IV solutions and medications in the neonatal intensive care unit. J Pediatr Pharmacol Ther 2006 ; 11:233-236.
3249	Revue	Singh BM, Dedhiya MG, Dinunzio J, Chan P, Kupiec TC, Trissel LA, Laudano JB. Compatibility of ceftaroline fosamil for injection with selected drugs during simulated Y-site administration. Am J Health-Syst Pharm 2011 ; 68: 2163-2169.

3254	Revue	Housman S.T, Tessier P.R, Nicolau D.P, Kuti J.L. Physical compatibility of telavancin hydrochloride with select i.v. drugs during simulated Y-site administration Am J Health-Syst Pharm 2011 ; 68: 2265-2270.
3275	Revue	D&#39;Hondt M, Vangheluwe E, Van Dorpe S, Boonen J, Bauters T, Pelfrene B, Vandenbroucke J, Robays H, De Spiegeleer B Stability of extemporaneously prepared cytarabine, methotrexate sodium, and methylprednisolone sodium succinate Am J Health-Syst Pharm 2012 ; 69: 232-240.
3459	Revue	Sun S, Schaller J, Placek J, Duersch B. Compatibility of intravenous fosaprepitant with intravenous 5-HT3 antagonists and corticosteroids. Cancer Chemother Pharmacol 2013 ; 72: 509-513.
3545	Laboratoire	Amoxicilline / acide clavulanique - Résumé des caractéristiques du produit Mylan SAS 2009
3564	Laboratoire	Rocuronium B Braun - Résumé des caractéristiques du produit. B Braun 2012
3571	Revue	Anderson C, Boehme S, Ouellette J, Stidham C, MacKay M. Physical and Chemical Compatibility of Injectable Acetaminophen During Simulated Y-Site Administration. Hosp Pharm 2014 ; 49, 1: 42-47.
3580	Laboratoire	Cytarabine Accord - Résumé des caractéristiques du produit Accord Healthcare France 2016
3585	Laboratoire	Benzympenicillin sodium - Summary of Product Characteristics Genus Pharmaceuticals 2008
3604	Laboratoire	Daunorubicine (Cérubidine®) - Résumé des caractéristiques du produit Sanofi Aventis France 2012
3728	Revue	Correard F, Savry A, Gauthier-Villano L, Pisano P, Pourroy B. Visual compatibility of defibrotide with selected drugs during simulated Y-site administration. Am J Health-Syst Pharm 2014 ; 71: 1288-1291.
3824	Revue	Boudi S, Roy H, Forest JM, Leclair G. Compatibilité physique de l&#39;association amoxicilline-acide clavulanique en injection avec plusieurs autres médicaments lors d&#39;une administration en Y. Pharmactuel 2023 2023;56,3:91-98
3827	Poster	Ghazi I.M, Hamada Y, Nicolau D.P. Compatibility of tedizolid phosphate with selected intravenous drugs via simulated Y-site conditions. ASHP Midyear 2015
3828	Poster	Thabit A.K, Hamada Y, Nicolau D.P. Ceftozolane/tazobactam physical compatibility during simulated Y-site administration. ASHP Midyear 2015
3829	Poster	So W, Kim L, Thabit A.K, Nicolau D.P, Kuti J.L. Compatibility of isavunazonium sulfate during simulated Y-site administration. ASHP Midyear 2015
3964	Revue	Audet M.A, Forest E, Friciu M, Forest J.M, Leclair G. Compatibilité du citrate de caféine injectable avec plusieurs autres médicaments. Pharmactuel 2017 ; 50,1 : 27-33.
3976	Revue	Du Repaire T, Vigne P, Guedon A, Gauthier-Villano L, Bertault Peres P, Pourroy B. Visual compatibility of blinatumomab with selected co-administrated drugs during simulated Y-site administration. Am J Health-Syst Pharm 2017 ; 74,16 : 1217-1218
4055	Revue	Monogue M, Almarzoky Abuhussain S, Kuti J, Nicolau D. Physical compatibility of fosfomycin for injection with select i.v. drugs during simulated Y-site administration. Am J Health-Syst Pharm 2018 , 75, 1:36-44
4145	Revue	Asempta T.E, Avery L.M, Kidd J.M, Kuti J.L, Nicolau D.P. Physical compatibility of plazomicin with select i.v. drugs during simulated Y-site administration. Am J Health-Syst Pharm 2018 ;75,14:1048-1056

4319	Revue	Lessard J-J, Caron E, Schérier H, Forest J-M, Leclair G. Compatibility of Y-site Injection of Meropenem Trihydrate With 101 Other Injectable Drugs. Hosp Pharm 2020 ; 55, 5: 332-337.
4428	Revue	Rashed S.M, Sweatman T.W, Thoma L, Hovinga C.A, Phelps S.J. Chemical Compatibility of Depacon® with Medications Frequently Administered by Intravenous Y-Site Delivery in Patients with Epilepsy or Head Trauma. J Pediatr Pharmacol Ther 2004 ; 9, 2: 126-132.
4433	Revue	Ghazi I.M, El Nekidy W.S, Sood A, Dulku A, Patel R, Patel K. Y-site Administration of Imipenem/Cilastatin/ Relebactam With Common Intravenous Medications Clin Ther 2020 ; 42, 3: 475-485.
4521	Revue	Polo C, D'Huart E, Lesperlette G, Vigneron J, Meyer F, Demoré B. Compatibility of injectable posaconazole with drugs commonly used in a hematology care unit. Pharmaceutical Technology in Hospital Pharmacy 2020
4603	Revue	Vallée M, Barthélémy I, Friciu M, Pelletier E, Forest J.M, Benoit F, Leclair G. Compatibility of Lactated Ringer's Injection With 94 Selected Intravenous Drugs During Simulated Y-site Administration. Hosp Pharm 2021 ; 56, 4: 228-234.
4641	Revue	Zanon D, Selmin F, Centin G, Maximova N, Casiraghi A, Minghetti P. Stability of high concentrated triple intrathecal therapy for pediatrics and mitigation strategies. Eur J Pharm Sci 2021 ;167: 106039.
4698	Revue	Ayari G, D'Huart E, Vigneron J, Demoré B. Y-site compatibility of intravenous medications commonly used in intensive care units : laboratory tests on 75 mixtures involving nine main drugs. Pharmaceutical Technology in Hospital Pharmacy 2022
4742	Revue	Macoviciuc M, Nguyen C, Forest J-M, Leclair G. Compatibilité physique de l'acétaminophène injectable avec 102 autres médicaments lors d'une administration en Y. Pharmactuel 2022 ; 55, 4: 247-255.
4801	Revue	Ruiz V, Yuwei Shen Y, Abouelhassan Y, Fouad A, Nicolau D, Kuti J. Physical compatibility of sulbactam/durlobactam with select intravenous drugs during simulated Y-site administration. Am J Health-Syst Pharm 2024 ;51,1:



# Dictionnaire

Antiinflammatoire	Injectable
Noms commerciaux	Stabilité des solutions
Contenant	Molécule
Concentration	Température
Conservation	Durée de stabilité
Biosimilaire	Données conflictuelles
Bibliographie	Verre
Eau pour préparation injectable	A l'abri de la lumière
Heure	Jour
Polyvinyl chlorure	Chlorure de sodium 0,9%
Polyéthylène	NaCl 0,9% ou glucose 5%
Ethylène vinyl acétate	Seringue polypropylène
Non précisée	Stabilité en mélange
Solvant	Molécule
Glucose 5%	Lumière
Polyolefine	Aucun
Non précisé	Compatibilités
Compatible	Turbidité en 1 heure
Incompatible	Instabilité chimique
Incompatibilité non précisée	Précipitation immédiate
<b>RL</b> Ringer lactate	Turbidité immédiate
NaCl 0,9% + bactériostatique	Perte de turbidité
Solvant spécifique	Précipitation en 4 heures
Nutrition parentérale (mélange binaire)	Nutrition parentérale (mélange ternaire)
Turbidité en 30 minutes	Instabilité de l'émulsion à 6 heures
Voie d'administration	Intraveineuse
Perfusion intraveineuse	Intramusculaire
Sous cutanée	Perfusion sous-cutanée
Perfusion SC continue	Bibliographie
Dictionnaire	