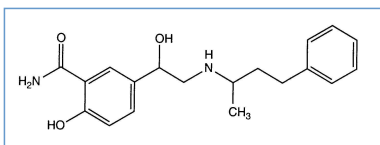


Stabilis



Labetalol hydrochloride



Noms commerciaux

| | |
|------------------------|--|
| Albetol | Finlande |
| Biascor | Argentine, Chili, Equateur, Pérou |
| Blocamine | Argentine |
| Cebalol | Inde |
| Deltalol | Colombie |
| Evabet | Inde |
| Gravidol | Inde |
| Labesol | Inde |
| Labeta | Inde |
| Labetalol | Argentine, Canada, Etats Unis d'Amérique |
| Labetalol chlorhidrato | Chili, Equateur |
| Labil | Inde |
| Trandate | Allemagne, Arabie Saoudite, Autriche, Belgique, Chili, Colombie, Danemark, Emirats Arabes Unis, Espagne, Etats Unis d'Amérique, Finlande, France, Grande Bretagne, Hongrie, Irlande, Islande, Italie, Japon, Luxembourg, Malaisie, Norvège, Nouvelle Zélande, Pays bas, Pologne, Suède, Suisse |
| Zevertens | Chili |



Stabilité des solutions

| | | 2,5 mg/ml | 25°C | | 72 | | | 1194 |
|--|----|-----------|------|--|----|--|--|------|
| | | 2,5 mg/ml | 4°C | | 72 | | | 1194 |
| | RL | 2,5 mg/ml | 25°C | | 72 | | | 1194 |
| | RL | 2,5 mg/ml | 4°C | | 72 | | | 1194 |



Stabilité en mélange

| | | 1 mg/ml | 20°C-25°C | | Dobutamine hydrochloride : 2,5 mg/ml | 4 | | 199 |
|--|--|---------|-----------|--|--------------------------------------|---|--|-----|
| | | 1 mg/ml | 20°C-25°C | | Dopamine hydrochloride : 1,6 mg/ml | 4 | | 199 |
| | | 1 mg/ml | 20°C-25°C | | Morphine sulfate : 0,5 mg/ml | 4 | | 199 |
| | | 1 mg/ml | 20°C-25°C | | Nitroglycerin : 0,2 mg/ml | 4 | | 199 |
| | | 1 mg/ml | 20°C-25°C | | Ranitidine hydrochloride : 0,6 mg/ml | 4 | | 199 |



Facteur influençant la stabilité

| | | | | |
|--|--|--|--|----------------------|
| | | | | 1194 1380 3609 |
|--|--|--|--|----------------------|



Compatibilités

| | | 386 |
|--|--|------|
| Labetalol hydrochloride : 1 mg/ml Amikacin sulfate : 5 mg/ml | | |
| | | 386 |
| Labetalol hydrochloride : 1 mg/ml Aminophylline : 1 mg/ml | | |
| | | 3823 |
| Labetalol hydrochloride : 4 mg/ml Amiodarone hydrochloride : 15 mg/ml | | |
| | | 1611 |
| Labetalol hydrochloride : 5 mg/ml Amiodarone hydrochloride : 6 mg/ml | | |
| | | 295 |
| Labetalol hydrochloride : 5 mg/ml Amiodarone hydrochloride : 4.8 mg/ml | | |
| | | 3824 |
| Labetalol hydrochloride : 5 mg/ml Amoxicillin sodium / clavulanic acid : 100/10 mg/ml | | |
| | | 921 |
| Labetalol hydrochloride : 5 mg/ml Amphotericin B cholesteryl sulfate complex : 0.83 mg/ml | | |
| | | 386 |
| Labetalol hydrochloride : 1 mg/ml Ampicillin sodium : 10 mg/ml | | |
| | | 4642 |
| Labetalol hydrochloride : 1 mg/ml Atosiban : 0,75 mg/ml | | |
| | | 3539 |
| Labetalol hydrochloride : 2 mg/ml Bivalirudin | | |
| | | 3539 |
| Labetalol hydrochloride : 5 mg/ml Bivalirudin | | |
| | | 1713 |
| Labetalol hydrochloride : 2 mg/ml Bivalirudin : 5 mg/ml | | |
| | | 386 |
| Labetalol hydrochloride : 1 mg/ml Butorphanol tartrate : 0.04 mg/ml | | |

| | | | | |
|--|--|--|----|------|
| | | Labetalol hydrochloride : 5 mg/ml Caffeine : 10 mg/ml | ∅ | 3964 |
| | | Labetalol hydrochloride : 1 mg/ml Calcium gluconate : 49.5 mg/ml | ♦ | 386 |
| | | Labetalol hydrochloride : 1 mg/ml Cefazolin sodium : 10 mg/ml | ♦ | 386 |
| | | Labetalol hydrochloride : 5 mg/ml Cefepime dihydrochloride : 40 mg/ml | ▲ | 3879 |
| | | Labetalol hydrochloride : 5 mg/ml Cefiderocol sulfate tosylate : 20 mg/mL | ▲♦ | 4528 |
| | | Labetalol hydrochloride : 1 mg/ml Cefoperazone sodium : 10 mg/ml | ♦ | 386 |
| | | Labetalol hydrochloride : 5 mg/ml Ceftaroline fosamil : 2,22 mg/ml | ▲♦ | 3249 |
| | | Labetalol hydrochloride : 5 mg/ml Ceftaroline fosamil : 2,22 mg/ml | RL | 3249 |
| | | Labetalol hydrochloride : 1 mg/ml Ceftazidime : 10 mg/ml | ♦ | 386 |
| | | Labetalol hydrochloride : 1 mg/ml Ceftizoxime sodium : 10 mg/ml | ♦ | 386 |
| | | Labetalol hydrochloride : 5 mg/ml Ceftobiprole medocaril sodium : 2 mg/ml | ▲♦ | 2269 |
| | | Labetalol hydrochloride : 5 mg/ml Ceftobiprole medocaril sodium : 2 mg/ml | RL | 2269 |
| | | Labetalol hydrochloride Ceftobiprole medocaril sodium | | 4650 |
| | | Labetalol hydrochloride : 2 mg/ml Ceftolozane / tazobactam : 10/5 mg/ml | ▲♦ | 3828 |
| | | Labetalol hydrochloride : 5 & 2,5 mg/ml Ceftriaxone disodium : 100 mg/ml | 💧 | 241 |
| | | Labetalol hydrochloride : 5 & 2,5 mg/ml Ceftriaxone disodium : 20 mg/ml | ▲♦ | 241 |
| | | Labetalol hydrochloride : 1 mg/ml Chloramphenicol sodium succinate : 10 mg/ml | ♦ | 386 |
| | | Labetalol hydrochloride : 1 mg/ml Cimetidine hydrochloride : 3 mg/ml | ♦ | 386 |
| | | Labetalol hydrochloride : 5 mg/ml Ciprofloxacin lactate : 2 mg/ml | ▲ | 3879 |
| | | Labetalol hydrochloride : 5 mg/ml Cisatracurium besylate : 2 mg/ml | ▲ | 3879 |
| | | Labetalol hydrochloride : 1 mg/ml Clindamycin phosphate : 9 mg/ml | ♦ | 386 |
| | | Labetalol hydrochloride : 1 mg/ml Clonidine hydrochloride : 0,018 mg/ml | ▲ | 2018 |
| | | Labetalol hydrochloride : 5 mg/ml Cloxacillin sodium : 100 mg/ml | 💧 | 3012 |
| | | Labetalol hydrochloride : 1 mg/ml Co-trimoxazole : 4/0.8 mg/ml | ♦ | 386 |
| | | Labetalol hydrochloride : 2 mg/ml Dexmedetomidine : 4 µg/ml | ▲ | 1712 |
| | | Labetalol hydrochloride : 2 mg/ml Diltiazem hydrochloride : 1 mg/ml | | 314 |

| | | | | |
|--|--|--|----|------|
| | | Labetalol hydrochloride : 2 mg/ml Dobutamine hydrochloride : 4 mg/ml | | 314 |
| | | Labetalol hydrochloride : 1 mg/ml Dobutamine hydrochloride : 2.5 mg/ml | | 199 |
| | | Labetalol hydrochloride : 5 mg/ml Dobutamine hydrochloride : 4 mg/ml | | 295 |
| | | Labetalol hydrochloride : 2 mg/ml Dopamine hydrochloride : 3.2 mg/ml | | 314 |
| | | Labetalol hydrochloride : 1 mg/ml Dopamine hydrochloride : 1.6 mg/ml | | 386 |
| | | Labetalol hydrochloride : 1 mg/ml Dopamine hydrochloride : 1.6 mg/ml | | 199 |
| | | Labetalol hydrochloride : 2 mg/ml Doripenem : 5 mg/ml | | 2262 |
| | | Labetalol hydrochloride : 5 mg/ml Doripenem : 4.5 mg/ml | | 3879 |
| | | Labetalol hydrochloride : 1 mg/ml Enalaprilate : 0.05 mg/ml | | 1315 |
| | | Labetalol hydrochloride : 2 mg/ml Epinephrine hydrochloride : 20 µg/ml | | 314 |
| | | Labetalol hydrochloride : 5 mg/ml Epinephrine hydrochloride : 128 µg/ml | | 3879 |
| | | Labetalol hydrochloride : 1 mg/ml Erythromycin lactobionate : 5 mg/ml | | 386 |
| | | Labetalol hydrochloride : 5 mg/ml Esmolol hydrochloride : 40 mg/ml | | 295 |
| | | Labetalol hydrochloride : 4 mg/ml Esmolol hydrochloride : 10 mg/ml | | 3823 |
| | | Labetalol hydrochloride : 5 mg/ml Esomeprazole sodium : 0,8 mg/ml | | 3879 |
| | | Labetalol hydrochloride : 1 mg/ml Famotidine : 0.2 mg/ml | | 398 |
| | | Labetalol hydrochloride : 2 mg/ml Fenoldopam mesylate : 80 µg/ml | | 1803 |
| | | Labetalol hydrochloride : 2 mg/ml Fentanyl citrate : 50 µg/ml | | 314 |
| | | Labetalol hydrochloride : 1 mg/ml Fentanyl citrate : 10 µg/ml | | 386 |
| | | Labetalol hydrochloride : 2 mg/ml Fosfomycin : 30 mg/ml | | 4055 |
| | | Labetalol hydrochloride : 2 mg/ml Furosemide : 10 mg/ml | | 314 |
| | | Labetalol hydrochloride : 1.6 mg/ml Furosemide : 10 mg/ml | | 89 |
| | | Labetalol hydrochloride : 1 mg/ml Gentamicin sulfate : 0.8 mg/ml | | 386 |
| | | Labetalol hydrochloride : 4 mg/ml Heparin sodium : 500 UI/ml | | 3823 |
| | | Labetalol hydrochloride : 1 mg/ml Heparin sodium : 40 UI/ml | | 386 |
| | | Labetalol hydrochloride : 5 mg/ml | RL | 4603 |

| | | | | |
|--|--|---|--|------|
| | | Labetalol hydrochloride : 5 mg/ml Furosemide : 10 mg/ml | | 3210 |
| | | Labetalol hydrochloride : 2 mg/ml Heparin sodium : 100 UI/ml | | 314 |
| | | Labetalol hydrochloride Heparin sodium | | 3540 |
| | | Labetalol hydrochloride | | 1380 |
| | | Labetalol hydrochloride | | 3609 |
| | | Labetalol hydrochloride : 1,25 >> 3,75 mg/ml | | 1194 |
| | | Labetalol hydrochloride : 5 mg/ml Heparin sodium : 100 UI/ml | | 295 |
| | | Labetalol hydrochloride : 2 mg/ml Hetastarch : 60 mg/ml | | 1721 |
| | | Labetalol hydrochloride : 5 mg/ml Human albumin : 250 mg/ml | | 3879 |
| | | Labetalol hydrochloride : 5 mg/ml Hydrocortisone sodium succinate : 1 mg/ml | | 3879 |
| | | Labetalol hydrochloride : 2 mg/ml Hydromorphone hydrochloride : 1 mg/ml | | 314 |
| | | Labetalol hydrochloride : 5 mg/ml Ibuprofen lysinate : 4 mg/ml | | 3879 |
| | | Labetalol hydrochloride : 2 mg/ml Imipenem-Cilastatin / Relebactam : 5 mg/ml | | 4433 |
| | | Labetalol hydrochloride : 5 mg/ml Insulin : 1 UI/ml | | 295 |
| | | Labetalol hydrochloride : 5 mg/ml Insulin aspart : 1 UI/ml | | 1508 |
| | | Labetalol hydrochloride : 2 mg/ml Isavuconazonium sulfate : 1.5 mg/ml | | 3829 |
| | | Labetalol hydrochloride : 2 mg/ml Lansoprazole : 0.55 mg/ml | | 1625 |
| | | Labetalol hydrochloride : 5 mg/ml Levofloxacin : 5 mg/ml | | 3879 |
| | | Labetalol hydrochloride : 5 mg/ml Levothyroxine : 0.4 µg/ml | | 3879 |
| | | Labetalol hydrochloride : 1 mg/ml Lidocaine hydrochloride : 20 mg/ml | | 386 |
| | | Labetalol hydrochloride : 5 mg/ml Linezolid : 2 mg/ml | | 1925 |
| | | Labetalol hydrochloride : 2 mg/ml Lorazepam : 0.5 mg/ml | | 314 |
| | | Labetalol hydrochloride : 1 mg/ml Magnesium sulfate : 10 mg/ml | | 386 |
| | | Labetalol hydrochloride : 5 mg/ml Meropenem : 20 mg/ml | | 3879 |
| | | Labetalol hydrochloride : 5 mg/ml Meropenem : 50 mg/ml | | 4319 |
| | | Labetalol hydrochloride : 1 mg/ml Metronidazole : 5 mg/ml | | 386 |
| | | Labetalol hydrochloride : 2 mg/ml Micafungin : 1.5 mg/ml | | 2108 |

| | | | | |
|--|--|--|------|-----|
| | Labetalol hydrochloride : 5 mg/ml Midazolam hydrochloride : 1 mg/ml | | 295 | |
| | Labetalol hydrochloride : 2 mg/ml Midazolam hydrochloride : 2 mg/ml | | 314 | |
| | Labetalol hydrochloride : 2 mg/ml Milrinone lactate : 0.2 mg/ml | | 314 | |
| | Labetalol hydrochloride : 1 mg/ml Morphine sulfate : 0.5 mg/ml | | 199 | |
| | Labetalol hydrochloride : 5 mg/ml Morphine sulfate : 1 mg/ml | | 62 | |
| | Labetalol hydrochloride : 1 mg/ml Morphine sulfate : 1 mg/ml | | 386 | |
| | Labetalol hydrochloride : 2 mg/ml Morphine sulfate : 2 mg/ml | | 314 | |
| | Labetalol hydrochloride : 5 mg/ml N-acetylcysteine : 200 mg/ml | | 3766 | |
| | | Labetalol hydrochloride : 1 mg/ml Nafcillin sodium : 10 mg/ml | | 386 |
| | Labetalol hydrochloride : 5 mg/ml Naloxone hydrochloride : 0.4 mg/ml | | 3408 | |
| | Labetalol hydrochloride : 2 mg/ml Nicardipine hydrochloride : 1 mg/ml | | 314 | |
| | Labetalol hydrochloride : 1 mg/ml Nicardipine hydrochloride : 0.1 mg/ml | | 1490 | |
| | Labetalol hydrochloride : 5 mg/ml Nitroglycerin : 0.2 mg/ml | | 295 | |
| | Labetalol hydrochloride : 2 mg/ml Nitroglycerin : 0.4 mg/ml | | 314 | |
| | Labetalol hydrochloride : 1 mg/ml Nitroglycerin : 0.2 mg/ml | | 199 | |
| | Labetalol hydrochloride : 4 mg/ml Nitroglycerin : 0.2 mg/ml | | 3823 | |
| | Labetalol hydrochloride : 5 mg/ml Nitroprusside sodium : 0.2 mg/ml | | 295 | |
| | Labetalol hydrochloride : 2 mg/ml Norepinephrine bitartrate : 0.128 mg/ml | | 314 | |
| | Labetalol hydrochloride : 5 mg/ml Norepinephrine bitartrate : 0.128 mg/ml | | 3879 | |
| | Labetalol hydrochloride : 5 mg/ml Norepinephrine bitartrate : 0.064 mg/ml | | 295 | |
| | Labetalol hydrochloride : 1 mg/ml Oxacillin sodium : 10 mg/ml | | 386 | |
| | | Labetalol hydrochloride Pantoprazole sodium | 2090 | |
| | Labetalol hydrochloride : 5 mg/ml Paracetamol : 10 mg/ml | | 4742 | |
| | Labetalol hydrochloride : 5 mg/ml Paracetamol : 10 mg/ml | | 3879 | |
| | Labetalol hydrochloride : 1 mg/ml Penicillin G potassium : 0.05 MUI/ml | | 386 | |
| | Labetalol hydrochloride : 5 mg/ml Pethidine hydrochloride : 10 mg/ml | | 62 | |

| | | | |
|--|---|--|------|
| | Labetalol hydrochloride : 1 mg/ml Piperacillin sodium : 10 mg/ml | | 386 |
| | Labetalol hydrochloride : 2 mg/ml Plazomicin sulfate : 24 mg/ml | | 4145 |
| | Labetalol hydrochloride : 1 mg/ml Potassium chloride : 400 mEq/l | | 386 |
| | Labetalol hydrochloride : 1 mg/ml Potassium phosphate : 0.44 mmol/ml | | 386 |
| | Labetalol hydrochloride : 5 mg/ml Propofol : 10 mg/ml | | 300 |
| | Labetalol hydrochloride : 1 mg/ml Ranitidine hydrochloride : 0.5 mg/ml | | 386 |
| | Labetalol hydrochloride : 1 mg/ml Ranitidine hydrochloride : 0.6 mg/ml | | 199 |
| | Labetalol hydrochloride : 2 mg/ml Ranitidine hydrochloride : 1 mg/ml | | 314 |
| | Labetalol hydrochloride : 1,25 >> 3,75 mg/ml Sodium bicarbonate : 50 mg/ml | | 1194 |
| | Labetalol hydrochloride Sodium bicarbonate | | 1380 |
| | Labetalol hydrochloride Sodium bicarbonate | | 3609 |
| | Labetalol hydrochloride : 2 mg/ml Sulbactam/durlobactam : 15/15 mg/ml | | 4801 |
| | Labetalol hydrochloride : 2 mg/ml Tedizolid phosphate : 0.8 mg/ml | | 3827 |
| | Labetalol hydrochloride : 5 mg/ml Telavancin hydrochloride : 7.5 mg/ml | | 3254 |
| | Labetalol hydrochloride : 5 mg/ml Telavancin hydrochloride : 7.5 mg/ml | | 3254 |
| | Labetalol hydrochloride : 2 mg/ml Thiopental sodium : 25 mg/ml | | 314 |
| | Labetalol hydrochloride : 4 mg/ml Tirofiban : 250 µg/ml | | 3823 |
| | Labetalol hydrochloride : 1 mg/ml Tobramycin sulfate : 0.8 mg/ml | | 386 |
| | Labetalol hydrochloride : 4 mg/ml Urapidil : 5 mg/ml | | 3823 |
| | Labetalol hydrochloride : 1 mg/ml Vancomycin hydrochloride : 5 mg/ml | | 386 |
| | Labetalol hydrochloride : 2 mg/ml Vecuronium bromide : 1 mg/ml | | 314 |
| | Labetalol hydrochloride : 0.8 mg/ml Warfarin sodium : 2 mg/ml | | 315 |



Voie d'administration



Bibliographie

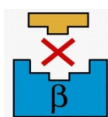
| | Type | Source |
|------|-------|---|
| 62 | Revue | Pugh CB, Pabis DJ, Rodriguez C. Visual compatibility of morphine sulfate and meperidine hydrochloride with other injectable drugs during simulated Y-site injection. Am J Hosp Pharm 1991 ; 48: 123-125. |
| 89 | Revue | Zeisler J, Alagna C. Incompatibility of labetalol hydrochloride and furosemide. Am J Hosp Pharm 1993 ; 50: 2521-2522. |
| 199 | Revue | Hassan E, Leslie J, Martir-Herrero ML. Stability of labetalol hydrochloride with selected critical care drugs during simulated Y-site injection. Am J Hosp Pharm 1994 ; 51: 2143-2145. |
| 241 | Revue | Leader WG, Jones JM. Incompatibility between ceftriaxone sodium and labetolol hydrochloride. Am J Health-Syst Pharm 1996 ; 53: 2639. |
| 295 | Revue | Yamashita SK, Walker SE, Choudhury T, Iazzetta J. Compatibility of selected critical care drugs during Y-site administration. Am J Health-Syst Pharm 1996 ; 53: 1048-1051. |
| 300 | Revue | Trissel LA, Gilbert DL, Martinez JF. Compatibility of propofol injectable emulsion with selected drugs during simulated Y-site administration. Am J Health-Syst Pharm 1997 ; 54: 1287-1292. |
| 314 | Revue | Chiu MF, Schwartz ML. Visual compatibility of injectable drugs used in the intensive care unit. Am J Health-Syst Pharm 1997 ; 54: 64-65. |
| 315 | Revue | Bahal SM, Lee TJ, McGinnes M, Dobler GL. Visual compatibility of warfarin sodium injection with selected medications and solutions. Am J Health-Syst Pharm 1997 ; 54: 2599-2600. |
| 386 | Revue | Colucci RD, Cobuzzi LE, Halpern NA. Visual compatibility of labetalol hydrochloride injection with various injectable drugs during simulated Y-site injection. Am J Hosp Pharm 1988 ; 45: 1357-1358. |
| 398 | Revue | Jay GT, Fanikos J, Souney PF. Visual compatibility of famotidine with commonly used critical-care medications during simulated Y-site injection. Am J Hosp Pharm 1988 ; 45: 1556-1557. |
| 921 | Revue | Trissel LA, Gilbert DL, Martinez JF. Incompatibility and compatibility of amphotericin B cholesteryl sulfate complex with selected other drugs during simulated Y-site administration. Hosp Pharm 1998 ; 33: 284-292. |
| 1194 | Revue | Yuen PHC, Taddei CR, Wyka BE, Chaudry IA. Compatibility and stability of labetolol hydrochloride in commonly used intravenous solutions. Am J Hosp Pharm 1983 ; 40: 1007-1009. |
| 1315 | Revue | Halpern NA, Colucci RD, Alicea M, Greenstein R. Visual compatibility of enalaprilat with commonly used critical care medications during simulated Y-site injection. Int J Pharm Clin Pharmacol Ther Tox 1989 ; 27: 294-297. |

| | | |
|------|-------|---|
| 1380 | Revue | Alam AS. Identification of labetolol precipitate. Am J Hosp Pharm 1984 ; 41: 74. |
| 1490 | Revue | Halpern NA, Colucci RD, Alicea M, Greenstein R. The compatibility of nicardipine hydrochloride injection with various ICU medications during simulated Y-site injection. Int J Pharm Clin Pharmacol Ther Tox 1989 ; 27: 250-254. |
| 1508 | Revue | Voirol P, Berger-Gryllaki M, Pannatier A, Eggimann P, Sadeghipour F. Visual compatibility of insulin aspart with intravenous drugs frequently used in ICU. EJHP 2015 ;22:123-124. |
| 1611 | Revue | Chalmers JR, Bobek MB, Militello MA. Visual compatibility of amiodarone hydrochloride injection with various intravenous drugs. Am J Health-Syst Pharm 2001 ; 58: 504-506. |
| 1625 | Revue | Trissel LA, Saenz C, Williams YW, Ingram D. Incompatibilities of lansoprazole injection with other drugs during simulated Y-site coadministration. Int J Pharm Compound 2001 ; 5: 314-321. |
| 1712 | Revue | Trissel LA, Saenz CA. Compatibility screening of Precedex during simulated Y-site administration with other drugs. Int J Pharm Compound 2002 ; 6: 230-233. |
| 1713 | Revue | Trissel LA, Saenz CA. Compatibility screening of bivalirudin during simulated Y-site administration with other drugs. Int J Pharm Compound 2002 ; 6: 311-315. |
| 1721 | Revue | Trissel LA, Williams KY, Baker MB. Compatibility screening of Hextend during simulated Y-site administration with other drugs. Int J Pharm Compound 2001 ; 5: 69-72. |
| 1803 | Revue | Trissel, LA, Saenz CA, Ogundele OB, Ingram D, Baker MB. Compatibility of fenoldopam mesylate with other drugs during simulated Y-site administration. Am J Health-Syst Pharm 2003 ; 60: 80-85. |
| 1925 | Revue | Trissel LA , Williams KY, Gilbert DL. Compatibility screening of linezolid injection during simulated Y-site administration with other drugs and infusion solutions. J Am Pharm Assoc 2000 ; 40: 515-519. |
| 2018 | Revue | Veggeland T. Visual compatibility of clonidine with selected drugs. Am J Health-Syst Pharm 2005 ; 62: 1968-1969. |
| 2090 | Revue | Pere H, Chasse V, Forest JM, Hildgen P. Compatibility of injectable pantoprazole in Y-site administration. Pharmactuel 2004 ; 37: 193-196. |
| 2108 | Revue | Trusley C, Kupiec TC, Trissel LA. Compatibility of micafungin injection with other drugs during simulated Y-site co-administration. Int J Pharm Compound 2006 ; 10: 230-232. |
| 2262 | Revue | Brammer MK, Chan P, Heatherly K, Trusley C, Kupiec TC, Trissel LA, Psathas PA, Gilmore T, Schaufelberger D. Compatibility of doripenem with other drugs during simulated Y-site administration Am J Health-Syst Pharm 2008 ; 65: 1261-1265. |
| 2269 | Revue | Chan P, Bishop A, Kupiec TC, Trissel LA, Gole D, Jimidar IM, Vermeersch H. Compatibility of ceftobiprole medocaril with selected drugs during simulated Y-site administration. Am J Health-Syst Pharm 2008 ; 65, 16: 1545-1551. |
| 3012 | Revue | Sullivan T, Forrest J.M, Leclair G. Compatibility of Cloxacillin Sodium with Selected Intravenous Drugs During Simulated Y-Site Administration Hosp Pharm 2015 ; 50, 3: 214-220. |
| 3210 | Revue | Jasti Bhaskara R, Saraf Poonam. Compatibility of Parenteral Furosemide with Seventeen Secondary Drugs Used in Standard Concentrations. Int J Pharm Compound 2011 ; 15, 3: 259-261. |

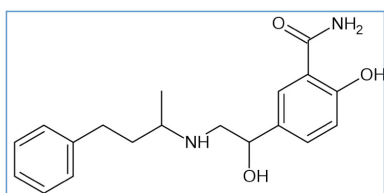
| | | |
|------|-------------|--|
| 3249 | Revue | Singh BM, Dedhiya MG, Dinunzio J, Chan P, Kupiec TC, Trissel LA, Laudano JB. Compatibility of ceftaroline fosamil for injection with selected drugs during simulated Y-site administration. Am J Health-Syst Pharm 2011 ; 68: 2163-2169. |
| 3254 | Revue | Housman S.T, Tessier P.R, Nicolau D.P, Kuti J.L. Physical compatibility of telavancin hydrochloride with select i.v. drugs during simulated Y-site administration Am J Health-Syst Pharm 2011 ; 68: 2265-2270. |
| 3408 | Revue | Tollec S, Touzin K, Pelletier E, Forest J.M. Evaluation visuelle de la compatibilité physique de la naloxone avec d'autres médicaments intraveineux usuels. Pharmactuel 2013 ; 46, 1 : 16-21. |
| 3539 | Laboratoire | Bivalirudin (Angiox®) - Summary of Product Characteristics. The Medecines Company 2013 |
| 3540 | Laboratoire | Heparin sodium - Summary of Product Characteristics. Wockhardt 2010 |
| 3609 | Laboratoire | Labetalol (Trandate®) - Summary of Product Characteristics Aspen Pharma 2013 |
| 3766 | Revue | Forrest J.M, Hildgen P. Compatibilité de l'acétylcystéine injectable lors de son administration en Y avec d'autres médicaments usuels Pharmactuel 2014 ; 47, 3 : 161-165. |
| 3823 | Revue | Juan E.P, Palau M.M, Cerdá S.A, Rubert M.A, Nicolau B.R. Compatibilité physique de médicaments administrés dans l'unité de soins intensifs Pharmactuel 2015 ; 48, 3 : 146-152. |
| 3824 | Revue | Boudi S, Roy H, Forest JM, Leclair G. Compatibilité physique de l'association amoxicilline-acide clavulanique en injection avec plusieurs autres médicaments lors d'une administration en Y. Pharmactuel 2023 2023;56,3:91-98 |
| 3827 | Poster | Ghazi I.M, Hamada Y, Nicolau D.P. Compatibility of tedizolid phosphate with selected intravenous drugs via simulated Y-site conditions. ASHP Midyear 2015 |
| 3828 | Poster | Thabit A.K, Hamada Y, Nicolau D.P. Ceftozolane/tazobactam physical compatibility during simulated Y-site administration. ASHP Midyear 2015 |
| 3829 | Poster | So W, Kim L, Thabit A.K, Nicolau D.P, Kuti J.L. Compatibility of isavunazonium sulfate during simulated Y-site administration. ASHP Midyear 2015 |
| 3879 | Revue | Foushee Jaime A, Meredith Pmichaele, Fox Laura M, Grace Edward E. Y-site Physical Compatibility of Beta-blocker Infusions with Intensive Care Unit Admixtures. Int J Pharm Compound 2016 ; 20, 4 : 328-332. |
| 3964 | Revue | Audet M.A, Forest E, Friciu M, Forest J.M, Leclair G. Compatibilité du citrate de caféine injectable avec plusieurs autres médicaments. Pharmactuel 2017 ; 50,1 : 27-33. |
| 4055 | Revue | Monogue M, Almarzoky Abuhussain S, Kuti J, Nicolau D. Physical compatibility of fosfomycin for injection with select i.v. drugs during simulated Y-site administration. Am J Health-Syst Pharm 2018 , 75, 1:36-44 |
| 4145 | Revue | Asempa T.E, Avery L.M, Kidd J.M, Kuti J.L, Nicolau D.P. Physical compatibility of plazomicin with select i.v. drugs during simulated Y-site administration. Am J Health-Syst Pharm 2018 ;75,14:1048-1056 |
| 4319 | Revue | Lessard J-J, Caron E, Schérier H, Forest J-M, Leclair G. Compatibility of Y-site Injection of Meropenem Trihydrate With 101 Other Injectable Drugs. Hosp Pharm 2020 ; 55, 5: 332-337. |
| 4433 | Revue | Ghazi I.M, El Nekidy W.S, Sood A, Dulku A, Patel R, Patel K. Y-site Administration of Imipenem/Cilastatin/ Relebactam With Common Intravenous Medications Clin Ther 2020 ; 42, 3: 475-485. |

| | | |
|------|-------------|---|
| 4528 | Revue | Lu J, Liu Q, Kupiec T, Vail H, Lunch L, Fam D, Vu N. Physical Compatibility of Cefiderocol with Selected Intravenous Drugs During Simulated Y-site Administration. Int J Pharm Compound 2021 ;25,1:52-61 |
| 4603 | Revue | Vallée M, Barthélémy I, Friciu M, Pelletier E, Forest J.M, Benoit F, Leclair G. Compatibility of Lactated Ringer's Injection With 94 Selected Intravenous Drugs During Simulated Y-site Administration. Hosp Pharm 2021 ; 56, 4: 228-234. |
| 4642 | Poster | Larossa garcia M, Jimenez-Lozano I, Boix-Montanés A, Mallandrich Miret M, Clemente Bautista M, cabanas Poy M.J., Gorgas Torner Compatibilidad en Y de atosiban y farmacois habitualmente utilizados en obstetricia. SEFH Congress (Virtual) October 2021 2021 |
| 4650 | Laboratoire | Ceftobiprole (Zevtera 500 mg powder for concentrate for solution for infusion.) Summary of Product Characteristics, Advanz Pharma updated 4 aug 2021. Advanz Pharma 2021 |
| 4742 | Revue | Macoviciuc M, Nguyen C, Forest J-M, Leclair G. Compatibilité physique de l'acétaminophène injectable avec 102 autres médicaments lors d'une administration en Y. Pharmactuel 2022 ; 55, 4: 247-255. |
| 4801 | Revue | Ruiz V, Yuwei Shen Y, Abouelhassan Y, Fouad A, Nicolau D, Kuti J. Physical compatibility of sulbactam/durlobactam with select intravenous drugs during simulated Y-site administration. Am J Health-Syst Pharm 2024 ;51,1: |

Stabilis


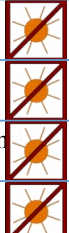
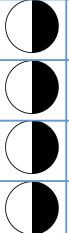

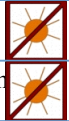
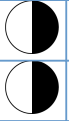

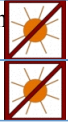
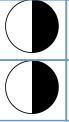





Labetalol hydrochloride



Stabilité des préparations

| | 2000 mg Trandate 100 mg® | Eau distillée >> 200 mL | 23°C | | 28 | | | 3793 |
|--|--------------------------|---|------|--|----|--|--|------|
| | 2000 mg Trandate 100 mg® | Sirop simple >> 200 mL | 23°C | | 28 | | | 3793 |
| | 2000 mg Trandate 100 mg® | Jus de pomme >> 200 mL | 23°C | | 28 | | | 3793 |
| | 2000 mg Trandate 100 mg® | Jus de raisin >> 200 mL | 23°C | | 28 | | | 3793 |
| | 2000 mg Trandate 100 mg® | Jus d'orange >> 200 mL | 23°C | | 28 | | | 3793 |
| | 800 mg Trandate® | SyrSpend SF® >> 20 ml | 25°C | | 90 | | | 4198 |
| | 800 mg Trandate® | SyrSpend SF® >> 20 ml | 4°C | | 90 | | | 4198 |
| | 2000 mg Trandate 100 mg® | Eau distillée >> 200 mL | 23°C | | 28 | | | 3793 |
| | 2000 mg Trandate 100 mg® | Sirop simple >> 200 mL | 23°C | | 28 | | | 3793 |
| | 2000 mg Trandate 100 mg® | Jus de pomme >> 200 mL | 23°C | | 28 | | | 3793 |
| | 2000 mg Trandate 100 mg® | Jus de raisin >> 200 mL | 23°C | | 28 | | | 3793 |
| | 2000 mg Trandate 100 mg® | Jus d'orange >> 200 mL | 23°C | | 28 | | | 3793 |
| | 4800 mg Normodyne® | OraPlus® / OraSweet® (1:1) >> 120 mL | 25°C | | 60 | | | 2435 |
| | 4800 mg Normodyne® | OraPlus® / OraSweet SF® (1:1) >> 120 mL | 25°C | | 60 | | | 2435 |
| | 4800 mg Normodyne® | Sirop cerise / sirop simple (1:4) >> 120 mL | 25°C | | 60 | | | 2435 |
| | 2000 mg Trandate 100 mg® | Sirop simple >> 200 mL | 4°C | | 28 | | | 3793 |
| | 2000 mg Trandate 100 mg® | Jus de pomme >> 200 mL | 4°C | | 28 | | | 3793 |
| | 2000 mg Trandate 100 mg® | Jus de raisin >> 200 mL | 4°C | | 28 | | | 3793 |

| | | | | | | | | | |
|---|--------------------------|---|-----|--|----|---|--|--|------|
|  | 2000 mg Trandate 100 mg® | Jus d'orange >> 200 mL | 4°C |  | 28 |  | | | 3793 |
|  | 4800 mg Normodyne® | OraPlus® / OraSweet® (1:1) >> 120 mL | 5°C |  | 60 |  | | | 2435 |
|  | 4800 mg Normodyne® | OraPlus® / OraSweet SF® (1:1) >> 120 mL | 5°C |  | 60 |  | | | 2435 |
|  | 4800 mg Normodyne® | Sirop cerise / sirop simple (1:4) >> 120 mL | 5°C |  | 60 |  | | | 2435 |



Bibliographie

| | Type | Source |
|------|-------|---|
| 2435 | Revue | Allen LV, Jr, Erickson MA, Stability of labetalol hydrochloride, metoprolol tartrate, verapamil hydrochloride, and spironolactone with hydrochlorothiazide in extemporaneously compounded oral liquids Am J Health-Syst Pharm 1996 ; 53: 2304-2309. |
| 3793 | Revue | Nahata M.C. Stability of labetalol hydrochloride in distilled water, simple syrup, and three fruit juices. Drug Intell Clin Pharm 1991 ; 25: 465-469. |
| 4198 | Revue | Uriel M, Gomez-Rincon C, Marro D. Stability of regularly prescribed oral liquids formulated with SyrSpend® SF. Pharmazie 2018 73;196-201 |



Dictionnaire

| | |
|---|---|
|  Béta-bloquant |  Injectable |
|  Noms commerciaux |  Stabilité des solutions |
|  Contenant |  Molécule |
|  Concentration |  Température |
|  Conservation |  Durée de stabilité |
|  Biosimilaire |  Données conflictuelles |
|  Bibliographie |  Verre |
|  Glucose 5% |  Non précisée |
|  Heure |  A l'abri de la lumière |
| RL Ringer lactate |  Stabilité en mélange |
|  Solvant |  Molécule |
|  Lumière |  Facteur influençant la stabilité |
|  NaHCO ₃ |  Provoque |
|  Dégradation |  Compatibilités |
|  Compatible |  NaCl 0,9% ou glucose 5% |
|  Précipitation immédiate |  Incompatible |
|  Incompatibilité non précisée |  Aucun |
|  Chlorure de sodium 0,9% |  Turbidité immédiate |
|  Eau pour préparation injectable |  Changement de couleur |
|  Turbidité en 15 minutes |  Précipitation en 6 heures |
|  Solvant spécifique |  Modification du pH > 1 unité pH |
|  Voie d'administration |  Intraveineuse |
|  Perfusion intraveineuse |  Perfusion continue |
|  Bibliographie |  Solution buvable |
|  Stabilité des préparations |  Origine |
|  Excipient |  Comprimés |
|  Jour |  Flacon plastique |
|  Dictionnaire | |