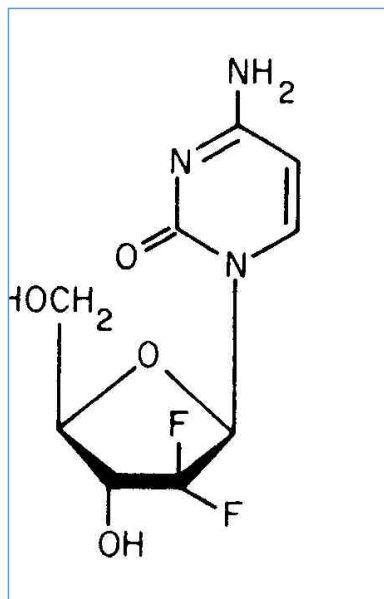


Stabilis



Gemcitabine hydrochloride



Noms commerciaux

Accogem	Mexique
Antoril	Argentine
Axigem	Allemagne
Bendacitabin	Allemagne
Binoptos	Mexique
Celzar	Pérou
Dercin	Roumanie
Dhacibine	Malaisie
Emcitab	Colombie
Eriogem	Argentine, Equateur
Fotinx	Argentine, Pérou
Gebina	Argentine
Gebitan	Colombie
Gembio	Argentine, Chili, Equateur
Gemcimira	Chili, Pérou
Gemcit	Portugal
Gemcitabin	Allemagne
Gemcitac	Chili
Gemko	Turquie
Gemsibin	Turquie
Gemsol	Autriche
Gemtero	Chili, Pérou
Gemzar	Afrique du sud, Allemagne, Australie, Autriche, Belgique, Brésil, Canada, Chili, Colombie, Croatie, Danemark, Egypte, Emirats Arabes Unis, Equateur, Espagne, Etats Unis d'Amérique, Finlande, France, Grande Bretagne, Grèce, Hongrie, Iran, Irlande, Islande, Italie, Luxembourg, Malaisie, Maroc, Mexique, Norvège, Nouvelle Zélande, Pays bas, Pologne, Portugal, Roumanie, Slovénie, Suède, Suisse, Thaïlande, Tunisie, Turquie, Vénézuéla
Gentabin	Colombie
Haxanit	Argentine, Pérou
Lenfotabin	Mexique



Stabilité des solutions

		38 mg/ml	23°C		35			1422
		0,1 & 25 mg/ml	2-8°C		35			2344
		0,1 & 25 (Ebegemcit® Lyo) mg/ml	20-25°C		14			2344
		38 mg/ml	23°C		35			1422
		40 mg/ml	25°C		27			1663
		5,12 mg/ml	23°C		48			1501
		7,5 & 25 mg/ml	25°C		27			1663
		0,1 & 25 mg/ml	2-8°C		35			2344
		0,1 & 25 (Ebegemcit® Lyo) mg/ml	20-25°C		14			2344
		0,1 & 10 mg/ml	23°C		35			1422
		0,1 & 10 mg/ml	4°C		35			1422
		0,1 & 10 & 38 mg/ml	32°C		7			1422
		0,1 & 25 mg/ml	2-8°C		35			2344
		0,1 & 25 (Ebegemcit® Lyo) mg/ml	20-25°C		14			2344
		2 mg/ml	25°C		28			3496
		2 mg/ml	5°C		28			3496
		5,12 mg/ml	23°C		48			1501
		5.2 mg/ml	25°C		28			3496
		5.2 mg/ml	5°C		28			3496
		7,5 & 25 mg/ml	25°C		27			1663
		0,1 & 25 mg/ml	2-8°C		35			2344
		0,1 & 25 (Ebegemcit® Lyo) mg/ml	20-25°C		14			2344
		0,1 & 25 mg/ml	2-8°C		35			2344
		0,1 & 25 (Ebegemcit® Lyo) mg/ml	20-25°C		14			2344
		2 mg/ml	25°C		28			3496
		2 mg/ml	5°C		28			3496
		5,12 mg/ml	22°C		48			1520
		5,12 mg/ml	23°C		48			1501
		5.2 mg/ml	25°C		28			3496
		5.2 mg/ml	5°C		28			3496

		0,1 & 25 mg/ml	2-8°C		35			2344
		0,1 & 25 (Ebegemcit® Lyo) mg/ml	20-25°C		14			2344
		0,1 & 25 mg/ml	2-8°C		35			2344
		0,1 & 25 (Ebegemcit® Lyo) mg/ml	20-25°C		14			2344
		0,1 & 25 mg/ml	2-8°C		35			2344
		0,1 & 25 (Ebegemcit® Lyo) mg/ml	20-25°C		14			2344
		5,5>>6,6 mg/ml	2-8°C		49			4736
		5,5>>6,6 mg/ml	21-25°C		49			4736
		9 mg/ml	2-8°C		84			3670
		38 mg/ml	23°C		35			1422



Stabilité en mélange

		0.105 mg/ml	25°C		Palonosetron hydrochloride : 26 µg/ml	4		2009



Compatibilités

		Gemcitabine hydrochloride : 16 >> 20 mg/ml		3262
		Gemcitabine hydrochloride : 10 mg/ml Aciclovir sodium : 7 mg/ml		1423
		Gemcitabine hydrochloride : 10 mg/ml Amifostine : 10 mg/ml		1423
		Gemcitabine hydrochloride : 10 mg/ml Amikacin sulfate : 5 mg/ml		1423
		Gemcitabine hydrochloride : 10 mg/ml Aminophylline : 2.5 mg/ml		1423
		Gemcitabine hydrochloride : 5 mg/ml Amiodarone hydrochloride : 6 mg/ml		1611
		Gemcitabine hydrochloride : 10 mg/ml Amphotericin B : 0.6 mg/ml		1423
		Gemcitabine hydrochloride : 10 mg/ml Ampicillin sodium : 20 mg/ml		1423
		Gemcitabine hydrochloride : 10 mg/ml Ampicillin sodium - sulbactam sodium : 20/10 mg/ml		1423
		Gemcitabine hydrochloride : 10 mg/ml Anidulafungin : 0.5 mg/ml		1982
		Gemcitabine hydrochloride : 10 mg/ml Aztreonam : 40 mg/ml		1423

	Gemcitabine hydrochloride : 10 mg/ml Bleomycin sulfate : 1 mg/ml		1423	
	Gemcitabine hydrochloride : 10 mg/ml Bumetanide : 0.04 mg/ml		1423	
	Gemcitabine hydrochloride : 10 mg/ml Buprenorphine hydrochloride : 0.04 mg/ml		1423	
	Gemcitabine hydrochloride : 10 mg/ml Butorphanol tartrate : 0.04 mg/ml		1423	
	Gemcitabine hydrochloride : 10 mg/ml Calcium gluconate : 40 mg/ml		1423	
	Gemcitabine hydrochloride : 10 mg/ml Carboplatin : 5 mg/ml		1423	
	Gemcitabine hydrochloride : 10 mg/ml Carmustine : 1.5 mg/ml		1423	
	Gemcitabine hydrochloride : 10 mg/ml Cefazolin sodium : 20 mg/ml		1423	
	Gemcitabine hydrochloride : 10 mg/ml Cefonicid sodium : 20 mg/ml		1423	
		Gemcitabine hydrochloride : 10 mg/ml Cefoperazone sodium : 40 mg/ml		1423
		Gemcitabine hydrochloride : 10 mg/ml Cefotaxime sodium : 20 mg/ml		1423
	Gemcitabine hydrochloride : 10 mg/ml Cefoxitin sodium : 20 mg/ml		1423	
	Gemcitabine hydrochloride : 10 mg/ml Ceftazidime : 40 mg/ml		1423	
	Gemcitabine hydrochloride : 10 mg/ml Ceftizoxime sodium : 20 mg/ml		1423	
	Gemcitabine hydrochloride : 10 mg/ml Ceftriaxone disodium : 20 mg/ml		1423	
	Gemcitabine hydrochloride : 10 mg/ml Cefuroxime sodium : 30 mg/ml		1423	
	Gemcitabine hydrochloride : 10 mg/ml Chlorpromazine hydrochloride : 2 mg/ml		1423	
	Gemcitabine hydrochloride : 10 mg/ml Cimetidine hydrochloride : 12 mg/ml		1423	
	Gemcitabine hydrochloride : 10 mg/ml Ciprofloxacin lactate : 1 mg/ml		1423	
	Gemcitabine hydrochloride : 10 mg/ml Cisplatin : 1 mg/ml		1423	
	Gemcitabine hydrochloride : 10 mg/ml Clindamycin phosphate : 10 mg/ml		1423	
	Gemcitabine hydrochloride : 10 mg/ml Co-trimoxazole : 0.8/4 mg/ml		1423	
	Gemcitabine hydrochloride : 10 mg/ml Cyclophosphamide : 10 mg/ml		1423	
	Gemcitabine hydrochloride : 10 mg/ml Cytarabine : 50 mg/ml		1423	
	Gemcitabine hydrochloride : 10 mg/ml Dactinomycin : 10 µg/ml		1423	
	Gemcitabine hydrochloride : 10 mg/ml Daunorubicin hydrochloride : 1 mg/ml		1423	

	Gemcitabine hydrochloride : 10 mg/ml Dexamethasone sodium phosphate : 1 mg/ml		1423
	Gemcitabine hydrochloride : 10 mg/ml Dexrazoxane hydrochloride : 5 mg/ml		1423
	Gemcitabine hydrochloride : 10 mg/ml Diphenhydramine hydrochloride : 2 mg/ml		1423
	Gemcitabine hydrochloride : 10 mg/ml Dobutamine hydrochloride : 4 mg/ml		1423
	Gemcitabine hydrochloride : 10 mg/ml Docetaxel : 2 mg/ml		1423
	Gemcitabine hydrochloride : 10 mg/ml Dopamine hydrochloride : 3.2 mg/ml		1423
	Gemcitabine hydrochloride : 10 mg/ml Doripenem : 5 mg/ml		2262
	Gemcitabine hydrochloride : 10 mg/ml Doxorubicin hydrochloride : 2 mg/ml		1423
	Gemcitabine hydrochloride : 10 mg/ml Doxycycline hyclate : 1 mg/ml		1423
	Gemcitabine hydrochloride : 10 mg/ml Droperidol : 0.4 mg/ml		1423
	Gemcitabine hydrochloride : 10 mg/ml Enalaprilate : 0.1 mg/ml		1423
	Gemcitabine hydrochloride : 10 mg/ml Etoposide : 0.4 mg/ml		1423
	Gemcitabine hydrochloride : 10 mg/ml Etoposide phosphate : 5 mg/ml		1423
	Gemcitabine hydrochloride : 10 mg/ml Famotidine : 2 mg/ml		1423
	Gemcitabine hydrochloride : 10 mg/ml Floxadine : 3 mg/ml		1423
	Gemcitabine hydrochloride : 10 mg/ml Fluconazole : 2 mg/ml		1423
	Gemcitabine hydrochloride : 10 mg/ml Fludarabine phosphate : 1 mg/ml		1423
	Gemcitabine hydrochloride : 10 mg/ml Fluorouracil : 16 mg/ml		1423
	Gemcitabine hydrochloride : 10 mg/ml Folate calcium : 2 mg/ml		1423
	Gemcitabine hydrochloride : 10 mg/ml Furosemide : 3 mg/ml		1423
	Gemcitabine hydrochloride : 10 mg/ml Gallium nitrate : 0.4 mg/ml		1423
	Gemcitabine hydrochloride : 10 mg/ml Ganciclovir sodium : 20 mg/ml		1423
	Gemcitabine hydrochloride : 10 mg/ml Gentamicin sulfate : 5 mg/ml		1423
	Gemcitabine hydrochloride : 10 mg/ml Granisetron hydrochloride : 0.05 mg/ml		1423
	Gemcitabine hydrochloride : 10 mg/ml Haloperidol lactate : 0.2 mg/ml		1423
	Gemcitabine hydrochloride : 10 mg/ml Heparin sodium : 100 UI/ml		1423

	Gemcitabine hydrochloride : 10 mg/ml Hydrocortisone sodium succinate : 1 mg/ml		1423	
	Gemcitabine hydrochloride : 10 mg/ml Hydromorphone hydrochloride : 0.5 mg/ml		1423	
	Gemcitabine hydrochloride : 10 mg/ml Hydroxyzine dihydrochloride : 2 mg/ml		1423	
	Gemcitabine hydrochloride : 10 mg/ml Idarubicin hydrochloride : 0.5 mg/ml		1423	
	Gemcitabine hydrochloride : 10 mg/ml Ifosfamide : 25 mg/ml		1423	
		Gemcitabine hydrochloride : 10 mg/ml Imipenem - cilastatin sodium : 10 mg/ml		1423
		Gemcitabine hydrochloride : 10 mg/ml Irinotecan : 5 mg/ml		1423
		Gemcitabine hydrochloride : 10 mg/ml Lansoprazole : 0.55 mg/ml		1625
	Gemcitabine hydrochloride : 10 mg/ml Linezolid : 2 mg/ml		1925	
	Gemcitabine hydrochloride : 10 mg/ml Lorazepam : 0.5 mg/ml		1423	
	Gemcitabine hydrochloride : 10 mg/ml Mannitol : 150 mg/ml		1423	
	Gemcitabine hydrochloride : 10 mg/ml Mesna : 10 mg/ml		1423	
		Gemcitabine hydrochloride : 10 mg/ml Methotrexate sodium : 15 mg/ml		1423
		Gemcitabine hydrochloride : 10 mg/ml Methylprednisolone sodium succinate : 5 mg/ml		1423
	Gemcitabine hydrochloride : 10 mg/ml Metoclopramide hydrochloride : 5 mg/ml		1423	
	Gemcitabine hydrochloride : 10 mg/ml Metronidazole : 5 mg/ml		1423	
	Gemcitabine hydrochloride : 10 mg/ml Minocycline hydrochloride : 0.2 mg/ml		1423	
		Gemcitabine hydrochloride : 10 mg/ml Mitomycin : 0.5 mg/ml		1423
	Gemcitabine hydrochloride : 10 mg/ml Mitoxantrone dihydrochloride : 0.5 mg/ml		1423	
	Gemcitabine hydrochloride : 10 mg/ml Morphine sulfate : 1 mg/ml		1423	
	Gemcitabine hydrochloride : 10 mg/ml Nalbuphine hydrochloride : 10 mg/ml		1423	
	Gemcitabine hydrochloride : 10 mg/ml Netilmicin sulfate : 5 mg/ml		1423	
	Gemcitabine hydrochloride : 10 mg/ml Ofloxacin : 4 mg/ml		1423	
	Gemcitabine hydrochloride : 10 mg/ml Ondansetron hydrochloride : 1 mg/ml		1423	
	Gemcitabine hydrochloride : 10 mg/ml Oxaliplatin : 0,5 mg/ml		1662	
	Gemcitabine hydrochloride : 10 mg/ml Paclitaxel : 1.2 mg/ml		1423	

	Gemcitabine hydrochloride : 16 mg/ml Paclitaxel albumin : 5 mg/ml		4310	
	Gemcitabine hydrochloride : 10 mg/ml Palonosetron hydrochloride : 50 µg/ml		2009	
		Gemcitabine hydrochloride : 10 mg/ml Pemetrexed disodium : 20 mg/ml		1953
	Gemcitabine hydrochloride : 10 mg/ml Pethidine hydrochloride : 4 mg/ml		1423	
		Gemcitabine hydrochloride : 10 mg/ml Piperacillin sodium : 40 mg/ml		1423
		Gemcitabine hydrochloride : 10 mg/ml Piperacillin sodium / tazobactam : 40/5 mg/ml		1423
	Gemcitabine hydrochloride : 10 mg/ml Potassium chloride : 100 mEq/l		1423	
		Gemcitabine hydrochloride : 10 mg/ml Prochlorperazine edysilate : 0.5 mg/ml		1423
	Gemcitabine hydrochloride : 10 mg/ml Promethazine hydrochloride : 2 mg/ml		1423	
	Gemcitabine hydrochloride : 10 mg/ml Ranitidine hydrochloride : 2 mg/ml		1423	
	Gemcitabine hydrochloride : 10 mg/ml Sodium bicarbonate : 84 mg/ml		1423	
		Gemcitabine hydrochloride : 16 >> 20 mg/ml Sodium bicarbonate : 84 mg/ml		3262
	Gemcitabine hydrochloride : 10 mg/ml Streptozocin : 40 mg/ml		1423	
	Gemcitabine hydrochloride : 10 mg/ml Teniposide : 0.1 mg/ml		1423	
	Gemcitabine hydrochloride : 10 mg/ml Thiotepa : 1 mg/ml		1423	
	Gemcitabine hydrochloride : 10 mg/ml Ticarcillin / clavulanic acid : 31 mg/ml		1423	
	Gemcitabine hydrochloride : 10 mg/ml Tobramycin sulfate : 5 mg/ml		1423	
	Gemcitabine hydrochloride : 10 mg/ml Topotecan : 0.1 mg/ml		1423	
	Gemcitabine hydrochloride : 10 mg/ml Vancomycin hydrochloride : 10 mg/ml		1423	
	Gemcitabine hydrochloride : 10 mg/ml Vinblastine sulfate : 0.12 mg/ml		1423	
	Gemcitabine hydrochloride : 10 mg/ml Vincristine sulfate : 0.05 mg/ml		1423	
	Gemcitabine hydrochloride : 10 mg/ml Vinorelbine tartrate : 1 mg/ml		1423	
	Gemcitabine hydrochloride : 10 mg/ml Zidovudine : 4 mg/ml		1423	



Bibliographie

	Type	Source
1422	Revue	Xu QA, Zhang Y, Trissel LA. Physical and chemical stability of gemcitabine hydrochloride solutions. J Am Pharm Assoc 1999 ; 39: 509-513.
1423	Revue	Trissel LA, Martinez JF, Gilbert DL. Compatibility of gemcitabine hydrochloride with 107 selected drugs during simulated Y-site injection. J Am Pharm Assoc 1999 ; 39: 514-518.
1501	Revue	Beitz C, Bertsch T, Hannak D, Schrammel W, Einberger C, Wehling M. Compatibility of plastics with cytotoxic drug solutions - comparison of polyethylene with other container materials. Int J Pharm 1999 ; 185: 113-121.
1520	Laboratoire	Etude de stabilité des médicaments en Ecoflac® B Braun 2001
1611	Revue	Chalmers JR, Bobek MB, Militello MA. Visual compatibility of amiodarone hydrochloride injection with various intravenous drugs. Am J Health-Syst Pharm 2001 ; 58: 504-506.
1625	Revue	Trissel LA, Saenz C, Williams YW, Ingram D. Incompatibilities of lansoprazole injection with other drugs during simulated Y-site coadministration. Int J Pharm Compound 2001 ; 5: 314-321.
1662	Revue	Trissel LA, Saenz CA, Ingram DS, Ogundele AB. Compatibility screening of oxaliplatin during simulated Y-site administration with other drugs. J Oncol Pharm Practice 2002 ; 8: 33-37.
1663	Revue	Ponton JL, Munoz C, Rey M, Val M. The stability of (lyophilized) gemcitabine in 0.9% sodium chloride injection. EJHP 2002 ; 1: 23-25.
1925	Revue	Trissel LA, Williams KY, Gilbert DL. Compatibility screening of linezolid injection during simulated Y-site administration with other drugs and infusion solutions. J Am Pharm Assoc 2000 ; 40: 515-519.
1953	Revue	Trissel LA, Saenz CA, Ogundele AB, Ingram DS. Physical compatibility of pemetrexed disodium with other drugs during simulated Y-site administration. Am J Health-Syst Pharm 2004 ; 61: 2289-2293.
1982	Revue	Trissel LA, Ogundele AB. Compatibility of anidulafungin with other drugs during simulated Y-site administration. Am J Health-Syst Pharm 2005 ; 62: 834-837.
2009	Revue	Trissel LA, Zhang Y. Physical and chemical stability of palonosetron hydrochloride with fluorouracil and with gemcitabine hydrochloride during simulated Y-site administration. Int J Pharm Compound 2005 ; 2005, 9, 4: 320-322.
2262	Revue	Brammer MK, Chan P, Heatherly K, Trusley C, Kupiec TC, Trissel LA, Psathas PA, Gilmore T, Schaufelberger D. Compatibility of doripenem with other drugs during simulated Y-site administration Am J Health-Syst Pharm 2008 ; 65: 1261-1265.
2344	Laboratoire	Stabilité physico-chimique de la gamme oncologie Ebewe Pharma France après dilution. Ebewe Pharma 2009

3262	Revue	Manners S, Galettis P, de Souza P. Conditions causing gemcitabine crystallization. J Oncol Pharm Practice 2011 ; 17, 4: 395-399.
3496	Laboratoire	Gemcitabin Actavis solution - Stability Study Actavis 2009
3670	Revue	Sewell G, Massimini M. Studies on the stability and compatibility of cytotoxic drug infusion with the Tevadaptor system. EJOP 2014 ; 8, 3: 26-30.
4310	Revue	Mizuta N, Nakagawa T, Yamamoto K, Nishioka T, Kume M, Makimoto H, Yano I, Minami H, Hiral M. Compatibility and Stability of Nab-Paclitaxel in Combination with Other Drugs. Kaohsiung J Med Sci 2017 ; 63, 1: E9-E16.
4736	Revue	Closset M, Colsoul ML, Goderniaux N, Bihin B, Jamart J, Onorati S, Soumoy L, Hecq JD, Odou P, Galanti L. An Ultra-High-Performance Chromatography method to study the long term stability of gemcitabine in dose banding conditions. J Pharm Biomed Anal 2023



Dictionnaire

 Anticancéreux	 Injectable
 Noms commerciaux	 Stabilité des solutions
 Contenant	 Molécule
 Concentration	 Température
 Conservation	 Durée de stabilité
 Biosimilaire	 Données conflictuelles
 Bibliographie	 Verre
 Eau pour préparation injectable	 Avec ou sans lumière
 Jour	 Chlorure de sodium 0,9%
 A l'abri de la lumière	 Heure
 Glucose 5%	 Polyvinyl chlorure
 NaCl 0,9% ou glucose 5%	 Lumière
 Polyéthylène	 Non précisée
 Polypropylène	 Polyoléfine
 Seringue polypropylène	 Stabilité en mélange
 Solvant	 Molécule
 Compatibilités	 Précipitation en 1 heure
 Incompatible	 NaHCO ₃
 Précipitation immédiate	 Compatible
 Turbidité en 1 heure	 Changement de couleur après 1 heure
 Turbidité immédiate	 Aucun
 Voie d'administration	 Perfusion intraveineuse
 Bibliographie	 Dictionnaire