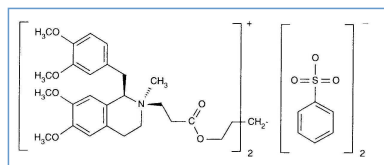


Stabilis



Cisatracurium besylate



Noms commerciaux

Bensitrak	Mexique
Besilato de cisatracurio	Colombie
Cicuryl	Mexique
Cirium	Colombie
Cis Atracure	Egypte
Cisatracurio	Espagne
Cisatracurium	Belgique, Canada
Nimbex	Allemagne, Arabie Saoudite, Australie, Autriche, Belgique, Canada, Chili, Danemark, Egypte, Emirats Arabes Unis, Equateur, Espagne, Etats Unis d'Amérique, Finlande, France, Grande Bretagne, Grèce, Hongrie, Iran, Irlande, Italie, Luxembourg, Malaisie, Norvège, Pays bas, Pologne, Portugal, Suède, Tunisie, Turquie, Vénézuéla
Nimbium	Colombie



Stabilité des solutions

		10 mg/ml	2-8°C		450			4769
		2 & 10 mg/ml	23°C		45			533
		2 & 10 mg/ml	4°C		90			533
		0,1 & 2 & 5 mg/ml	4°C		30			533
		5 mg/ml	23°C		30			533
		0,1 mg/ml	23-27°C		48			4358
		0,1 mg/ml	4-6°C		7			4358
		0,1 mg/ml	23-27°C		24			4358
		0,1 mg/ml	4-6°C		7			4358
		0,1 mg/ml	23-27°C		2			4358
		0,1 mg/ml	4-6°C		7			4358

		0,1 mg/ml	23-27°C		2			4358
		0,1 mg/ml	4-6°C		2			4358
		2 mg/ml	23-27°C		7			4358
		2 mg/ml	23°C		30			533
		2 mg/ml	4-6°C		7			4358
		2 mg/ml	4°C		30			533
		5 mg/ml	23-27°C		7			4358
		5 mg/ml	4-6°C		7			4358



Stabilité en mélange

		0.26 mg/ml	25°C		Palonosetron hydrochloride : 25.4 µg/ml	4		2227



Facteur influençant la stabilité

	RL			3601
	NaH CO3			299 3466 3823
	PH >7			3601



Compatibilités

		Cisatracurium besylate : 5 mg/ml Aciclovir sodium : 7 mg/ml	299
		Cisatracurium besylate : 0.1 & 2 mg/ml Aciclovir sodium : 7 mg/ml	299
		Cisatracurium besylate Alfentanil hydrochloride	3601
		Cisatracurium besylate : 0.1 >> 5 mg/ml Alfentanil hydrochloride : 125 µg/ml	299
		Cisatracurium besylate : 1,2 mg/ml Alprostadil : 20 µg/ml	4491
		Cisatracurium besylate : 1,2 mg/ml Alprostadil : 20 µg/ml	4651
		Cisatracurium besylate : 0.1 >> 5 mg/ml Amikacin sulfate : 5 mg/ml	299

		Cisatracurium besylate : 5 mg/ml Aminophylline : 2.5 mg/ml		299
		Cisatracurium besylate : 0.1 & 2 mg/ml Aminophylline : 2.5 mg/ml		299
		Cisatracurium besylate Amiodarone hydrochloride		3464
		Cisatracurium besylate : 5 mg/ml Amiodarone hydrochloride : 15 mg/ml		3823
		Cisatracurium besylate : 2 & 5 mg/ml Amphotericin B : 0.6 mg/ml		299
		Cisatracurium besylate : 0.1 mg/ml Amphotericin B : 0.6 mg/ml		299
		Cisatracurium besylate : 2 mg/ml Amphotericin B cholesteryl sulfate complex : 0.83 mg/ml		921
		Cisatracurium besylate : 0.1 & 2 mg/ml Ampicillin sodium : 20 mg/ml		299
		Cisatracurium besylate : 5 mg/ml Ampicillin sodium : 20 mg/ml		299
		Cisatracurium besylate : 5 mg/ml Ampicillin sodium - sulbactam sodium : 20/10 mg/ml		299
		Cisatracurium besylate : 0.1 & 2 mg/ml Ampicillin sodium - sulbactam sodium : 20/10 mg/ml		299
		Cisatracurium besylate : 0.1 >> 5 mg/ml Aztreonam : 40 mg/ml		299
		Cisatracurium besylate : 0.1 >> 5 mg/ml Bumetanide : 0.04 mg/ml		299
		Cisatracurium besylate : 0.1 >> 5 mg/ml Buprenorphine hydrochloride : 0.04 mg/ml		299
		Cisatracurium besylate : 0.1 >> 5 mg/ml Butorphanol tartrate : 0.04 mg/ml		299
		Cisatracurium besylate : 1 mg/ml Calcium gluconate : 20 mg/ml		3429
		Cisatracurium besylate : 0.1 >> 5 mg/ml Calcium gluconate : 40 mg/ml		299
		Cisatracurium besylate : 2 & 5 mg/ml Cefazolin sodium : 20 mg/ml		299
		Cisatracurium besylate : 0.1 mg/ml Cefazolin sodium : 20 mg/ml		299
		Cisatracurium besylate : 0.4 mg/ml Cefiderocol sulfate tosylate : 20 mg/mL		4528
		Cisatracurium besylate : 0.1 >> 5 mg/ml Cefoperazone sodium : 40 mg/ml		299
		Cisatracurium besylate : 0.1 >> 5 mg/ml Cefoperazone sodium : 40 mg/ml		299
		Cisatracurium besylate : 5 mg/ml Cefotaxime sodium : 20 mg/ml		299
		Cisatracurium besylate : 0.1 mg/ml Cefotaxime sodium : 20 mg/ml		299
		Cisatracurium besylate : 2 mg/ml Cefotaxime sodium : 20 mg/ml		299
		Cisatracurium besylate : 2 & 5 mg/ml Cefoxitin sodium : 20 mg/ml		299

		Cisatracurium besylate : 0.1 mg/ml Cefoxitin sodium : 20 mg/ml		299
		Cisatracurium besylate : 0,5 mg/ml Ceftaroline fosamil : 2,22 mg/ml		3249
		Cisatracurium besylate : 0,5 mg/ml Ceftaroline fosamil : 2,22 mg/ml	RL	3249
		Cisatracurium besylate : 0.1 & 2 mg/ml Ceftazidime : 40 mg/ml		299
		Cisatracurium besylate : 5 mg/ml Ceftazidime : 40 mg/ml		299
		Cisatracurium besylate : 5 mg/ml Ceftizoxime sodium : 20 mg/ml		299
		Cisatracurium besylate : 0.1 & 2 mg/ml Ceftizoxime sodium : 20 mg/ml		299
		Cisatracurium besylate Ceftobiprole medocaril sodium		4650
		Cisatracurium besylate : 0.5 mg/ml Ceftobiprole medocaril sodium : 2 mg/ml		2269
		Cisatracurium besylate : 0.5 mg/ml Ceftobiprole medocaril sodium : 2 mg/ml	RL	2269
		Cisatracurium besylate : 0.4 mg/ml Ceftolozane / tazobactam : 10/5 mg/ml		3828
		Cisatracurium besylate : 0.1 >> 5 mg/ml Ceftriaxone disodium : 20 mg/ml		299
		Cisatracurium besylate : 2 & 5 mg/ml Cefuroxime sodium : 30 mg/ml		299
		Cisatracurium besylate : 0.1 >> 5 mg/ml Chlorpromazine hydrochloride : 2 mg/ml		299
		Cisatracurium besylate : 0.1 >> 5 mg/ml Cimetidine hydrochloride : 12 mg/ml		299
		Cisatracurium besylate : 0.1 >> 5 mg/ml Ciprofloxacin lactate : 1 mg/ml		299
		Cisatracurium besylate : 0.1 >> 5 mg/ml Clindamycin phosphate : 10 mg/ml		299
		Cisatracurium besylate : 5 mg/ml Clonazepam : 0.2 mg/ml		3823
		Cisatracurium besylate : 5 mg/ml Clonidine hydrochloride : 0.012 mg/ml		3823
		Cisatracurium besylate : 0.1 mg/ml Co-trimoxazole : 0.8/4 mg/ml		299
		Cisatracurium besylate : 2 & 5 mg/ml Co-trimoxazole : 0,8/4 mg/ml		299
		Cisatracurium besylate : 0.5 mg/ml Dexmedetomidine : 4 µg/ml		1712
		Cisatracurium besylate : 0.1 >> 5 mg/ml Diazepam : 0.25 mg/ml		299
		Cisatracurium besylate : 0.1 >> 5 mg/ml Diazepam : 5 mg/ml		299
		Cisatracurium besylate : 5 mg/ml Diclofenac : 3 mg/ml		3823
		Cisatracurium besylate : 0.1 >> 5 mg/ml Digoxin : 250 µg/ml		299

		Cisatracurium besylate : 1 mg/ml Diltiazem hydrochloride : 1 mg/ml		3429
		Cisatracurium besylate : 0.1 >> 5 mg/ml Diphenhydramine hydrochloride : 2 mg/ml		299
		Cisatracurium besylate : 0.1 >> 5 mg/ml Dobutamine hydrochloride : 4 mg/ml		299
		Cisatracurium besylate : 0.1 >> 5 mg/ml Dopamine hydrochloride : 3.2 mg/ml		299
		Cisatracurium besylate : 0.1 >> 5 mg/ml Doxycycline hyclate : 1 mg/ml		299
		Cisatracurium besylate : 0.1 >> 5 mg/ml Droperidol : 2.5 mg/ml		299
		Cisatracurium besylate Droperidol		3601
		Cisatracurium besylate : 0.1 >> 5 mg/ml Enalaprilate : 0.1 mg/ml		299
		Cisatracurium besylate : 0.1 >> 5 mg/ml Epinephrine hydrochloride : 50 µg/ml		299
		Cisatracurium besylate : 0,4 mg/ml Eravacycline : 0,6 mg/ml		4434
		Cisatracurium besylate : 2 & 5 mg/ml		299
		Cisatracurium besylate : 5 mg/ml Esmolol hydrochloride : 10 mg/ml		3823
		Cisatracurium besylate : 0.1 >> 5 mg/ml Esmolol hydrochloride : 10 mg/ml		299
		Cisatracurium besylate : 2 mg/ml Esmolol hydrochloride : 10 mg/ml		3879
		Cisatracurium besylate : 1 mg/ml Esomeprazole sodium : 0,4 mg/ml		3429
		Cisatracurium besylate : 0.1 >> 5 mg/ml Famotidine : 2 mg/ml		299
		Cisatracurium besylate : 0.5 mg/ml Fenoldopam mesylate : 80 µg/ml		1803
		Cisatracurium besylate : 0.1 >> 5 mg/ml Fentanyl citrate : 12.5 µg/ml		299
		Cisatracurium besylate Fentanyl citrate		3601
		Cisatracurium besylate : 0.1 >> 5 mg/ml Fluconazole : 2 mg/ml		299
		Cisatracurium besylate : 0.4 mg/ml Fosfomicin : 30 mg/ml		4055
		Cisatracurium besylate Furosemide		3465
		Cisatracurium besylate : 2 & 5 mg/ml Furosemide : 3 mg/ml		299
		Cisatracurium besylate : 5 mg/ml		3823
		Cisatracurium besylate		3466
		Cisatracurium besylate		3601
		Cisatracurium besylate : 5 mg/ml Furosemide : 10 mg/ml		3134

		Cisatracurium besylate : 5 mg/ml Furosemide : 10 mg/ml		3823
		Cisatracurium besylate : 2 mg/ml		4507
		Cisatracurium besylate	RL	3601
		Cisatracurium besylate : 5 mg/ml Furosemide : 10 mg/ml		3463
		Cisatracurium besylate : 0.1 mg/ml Furosemide : 3 mg/ml		299
		Cisatracurium besylate : 5 mg/ml Ganciclovir sodium : 20 mg/ml		299
		Cisatracurium besylate : 0.1 & 2 mg/ml Ganciclovir sodium : 20 mg/ml		299
		Cisatracurium besylate : 0.1 >> 5 mg/ml Gentamicin sulfate : 5 mg/ml		299
		Cisatracurium besylate : 0.1 >> 5 mg/ml Haloperidol lactate : 0.2 mg/ml		299
		Cisatracurium besylate Heparin sodium		3540
		Cisatracurium besylate : 0.1 & 2 mg/ml Heparin sodium : 100 UI/ml		299
		Cisatracurium besylate : 5 mg/ml Heparin sodium : 500 UI/ml		3463
		Cisatracurium besylate : 5 mg/ml Heparin sodium : 500 UI/ml		3823
		Cisatracurium besylate : 5 mg/ml Heparin sodium : 100 UI/ml		299
		Cisatracurium besylate : 0.5 mg/ml Hetastarch : 60 mg/ml		1721
		Cisatracurium besylate : 2 mg/ml Hydrocortisone sodium succinate : 1 mg/ml		4465
		Cisatracurium besylate : 0.1 >> 5 mg/ml Hydrocortisone sodium succinate : 1 mg/ml		299
		Cisatracurium besylate : 0.1 >> 5 mg/ml Hydromorphone hydrochloride : 0.5 mg/ml		299
		Cisatracurium besylate : 0.1 >> 5 mg/ml Hydroxyzine dihydrochloride : 2 mg/ml		299
		Cisatracurium besylate : 0.1 >> 5 mg/ml Imipenem - cilastatin sodium : 10 mg/ml		299
		Cisatracurium besylate : 0,4 mg/ml Imipenem-Cilastatin / Relebactam : 5 mg/ml		4433
		Cisatracurium besylate : 1 mg/ml Insulin : 1 UI/ml		3429
		Cisatracurium besylate : 5 mg/ml Insulin : 2 UI/ml		3823
		Cisatracurium besylate : 0.4 mg/ml Isavuconazonium sulfate : 1.5 mg/ml		3829
		Cisatracurium besylate : 0.1 >> 5 mg/ml Isoprenaline hydrochloride : 0.02 mg/ml		299
		Cisatracurium besylate : 0.1 >> 5 mg/ml Ketorolac tromethamine : 15 mg/ml		299
		Cisatracurium besylate Ketorolac tromethamine		3601

	Cisatracurium besylate : 2 mg/ml Labetalol hydrochloride : 5 mg/ml		3879	
	Cisatracurium besylate : 1 mg/ml Levetiracetam : 5 mg/ml		4569	
	Cisatracurium besylate : 0.1 >> 5 mg/ml Lidocaine hydrochloride : 8 mg/ml		299	
	Cisatracurium besylate : 2 mg/ml Linezolid : 2 mg/ml		1925	
	Cisatracurium besylate : 0.1 >> 5 mg/ml Lorazepam : 0.5 mg/ml		299	
	Cisatracurium besylate : 0.1 >> 5 mg/ml Magnesium sulfate : 100 mg/ml		299	
	Cisatracurium besylate : 0.1 >> 5 mg/ml Mannitol : 150 mg/ml		299	
		Cisatracurium besylate : 2 & 5 mg/ml Methylprednisolone sodium succinate : 5 mg/ml		299
	Cisatracurium besylate : 0.1 mg/ml Methylprednisolone sodium succinate : 5 mg/ml		299	
	Cisatracurium besylate : 0.1 >> 5 mg/ml Metoclopramide hydrochloride : 5 mg/ml		299	
	Cisatracurium besylate : 2 mg/ml Metoprolol tartrate : 0.4 mg/ml		3879	
	Cisatracurium besylate : 0.1 >> 5 mg/ml Metronidazole : 5 mg/ml		299	
		Cisatracurium besylate : 0.5 mg/ml Micafungin : 1.5 mg/ml		2108
	Cisatracurium besylate : 0.1 >> 5 mg/ml Midazolam hydrochloride : 1 mg/ml		299	
	Cisatracurium besylate : 5 mg/ml Midazolam hydrochloride : 2.1 mg/ml		3823	
	Cisatracurium besylate Midazolam hydrochloride		3601	
	Cisatracurium besylate : 0.1 >> 5 mg/ml Minocycline hydrochloride : 0.2 mg/ml		299	
	Cisatracurium besylate : 0.1 >> 5 mg/ml Morphine sulfate : 1 mg/ml		299	
	Cisatracurium besylate : 0.1 >> 5 mg/ml Nalbuphine hydrochloride : 10 mg/ml		299	
	Cisatracurium besylate : 0.1 >> 5 mg/ml Netilmicin sulfate : 5 mg/ml		299	
	Cisatracurium besylate : 1 mg/ml Nicardipine hydrochloride : 0,5 mg/ml		3429	
	Cisatracurium besylate : 5 mg/ml Nimodipine : 0.2 mg/ml		3823	
	Cisatracurium besylate : 5 mg/ml Nitroglycerin : 0.2 mg/ml		3823	
	Cisatracurium besylate : 0.1 >> 5 mg/ml Nitroglycerin : 0.4 mg/ml		299	
	Cisatracurium besylate : 0.1 mg/ml Nitroprusside sodium : 2 mg/ml		299	
		Cisatracurium besylate : 2 & 5 mg/ml Nitroprusside sodium : 2 mg/ml		299

		Cisatracurium besylate : 0.1 >> 5 mg/ml Norepinephrine bitartrate : 0.12 mg/ml		299
		Cisatracurium besylate : 0.1 >> 5 mg/ml Ofloxacin : 4 mg/ml		299
		Cisatracurium besylate : 5 mg/ml Omeprazole sodium : 1.6 mg/ml		3823
		Cisatracurium besylate : 0.1 >> 5 mg/ml Ondansetron hydrochloride : 1 mg/ml		299
		Cisatracurium besylate : 0,5 mg/ml Palonosetron hydrochloride : 50 µg/ml		2227
		Cisatracurium besylate : 1 mg/ml Pantoprazole sodium : 0,8 mg/ml		3429
		Cisatracurium besylate : 0.1 >> 5 mg/ml Pethidine hydrochloride : 4 mg/ml		299
		Cisatracurium besylate : 0.1 >> 5 mg/ml Phenylephrine hydrochloride : 1 mg/ml		299
		Cisatracurium besylate : 2 & 5 mg/ml Piperacillin sodium : 40 mg/ml		299
		Cisatracurium besylate : 0.1 mg/ml Piperacillin sodium : 40 mg/ml		299
		Cisatracurium besylate : 0.1 & 2 mg/ml Piperacillin sodium / tazobactam : 40/5 mg/ml		299
		Cisatracurium besylate : 5 mg/ml Piperacillin sodium / tazobactam : 40/5 mg/ml		299
		Cisatracurium besylate : 0.4 mg/ml Plazomicin sulfate : 24 mg/ml		4145
		Cisatracurium besylate : 5 mg/ml Potassium chloride : 10 mEq/l		3823
		Cisatracurium besylate : 0.1 >> 5 mg/ml Potassium chloride : 100 mEq/l		299
		Cisatracurium besylate : 0.1 >> 5 mg/ml Procainamide hydrochloride : 10 mg/ml		299
		Cisatracurium besylate : 0.1 >> 5 mg/ml Prochlorperazine edysilate : 0.5 mg/ml		299
		Cisatracurium besylate : 0.1 >> 5 mg/ml Promethazine hydrochloride : 2 mg/ml		299
		Cisatracurium besylate Propofol		3601
		Cisatracurium besylate : 0.1 >> 5 mg/ml Ranitidine hydrochloride : 2 mg/ml		299
		Cisatracurium besylate : 2 mg/ml Remifentanil hydrochloride : 25 & 250 µg/ml		59
		Cisatracurium besylate : 5 mg/ml Remifentanil hydrochloride : 100 µg/ml		3823
		Cisatracurium besylate : 2 mg/ml Sodium bicarbonate : 84 mg/ml		299
		Cisatracurium besylate : 0.1 mg/ml Sodium bicarbonate : 84 mg/ml		299
		Cisatracurium besylate Sodium bicarbonate		3466
		Cisatracurium besylate : 5 mg/ml Sodium bicarbonate : 84 mg/ml		3212

		Cisatracurium besylate Sodium bicarbonate		3601
		Cisatracurium besylate : 5 mg/ml Sodium bicarbonate : 84 mg/ml		299
		Cisatracurium besylate Sufentanil citrate		3601
		Cisatracurium besylate : 0.1 >> 5 mg/ml Sufentanil citrate : 0.0125 mg/ml		299
		Cisatracurium besylate : 0,4 mg/ml Sulbactam/durlobactam : 15/15 mg/ml		4801
		Cisatracurium besylate : 0.4 mg/ml Tedizolid phosphate : 0.8 mg/ml		3827
		Cisatracurium besylate : 0.1 >> 5 mg/ml Theophylline : 3.2 mg/ml		299
		Cisatracurium besylate : 2 & 5 mg/ml Thiopental sodium : 25 mg/ml		299
		Cisatracurium besylate : 5 mg/ml Thiopental sodium : 60 mg/ml		3823
		Cisatracurium besylate : 0.1 mg/ml Thiopental sodium : 25 mg/ml		299
		Cisatracurium besylate Thiopental sodium		3601
		Cisatracurium besylate : 0.1 & 2 mg/ml Ticarcillin / clavulanic acid : 30 mg/ml		299
		Cisatracurium besylate : 5 mg/ml Ticarcillin / clavulanic acid : 30 mg/ml		299
		Cisatracurium besylate : 0.1 >> 5 mg/ml Tobramycin sulfate : 5 mg/ml		299
		Cisatracurium besylate : 0.1 >> 5 mg/ml Vancomycin hydrochloride : 10 mg/ml		299
		Cisatracurium besylate : 1 mg/ml Vasopressin : 1 UI/ml		3429
		Cisatracurium besylate : 0.1 >> 5 mg/ml Zidovudine : 4 mg/ml		299



Voie d'administration



Bibliographie

	Type	Source
59	Revue	Trissel LA, Gilbert DL, Martinez JF, Kim MC. Compatibility of remifentanyl hydrochloride with selected drugs during simulated Y-site administration. Am J Health-Syst Pharm 1997 ; 54: 2192-2196.
299	Revue	Trissel LA, Martinez JF, Gilbert DL. Compatibility of cisatracurium besylate with selected drugs during simulated Y-site administration. Am J Health-Syst Pharm 1997 ; 54: 1735-1741.


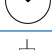


533	Revue	Xu QA, Zhang YP, Trissel LA, Gilbert DL, Martinez JF, Fox JL. Stability of cisatracurium besylate in vials, syringes and infusion admixtures. Am J Health-Syst Pharm 1998 ; 55: 1037-1041.
921	Revue	Trissel LA, Gilbert DL, Martinez JF. Incompatibility and compatibility of amphotericin B cholesteryl sulfate complex with selected other drugs during simulated Y-site administration. Hosp Pharm 1998 ; 33: 284-292.
1712	Revue	Trissel LA, Saenz CA. Compatibility screening of Precedex during simulated Y-site administration with other drugs. Int J Pharm Compound 2002 ; 6: 230-233.
1721	Revue	Trissel LA, Williams KY, Baker MB. Compatibility screening of Hextend during simulated Y-site administration with other drugs. Int J Pharm Compound 2001 ; 5: 69-72.
1803	Revue	Trissel, LA, Saenz CA, Ogundele OB, Ingram D, Baker MB. Compatibility of fenoldopam mesylate with other drugs during simulated Y-site administration. Am J Health-Syst Pharm 2003 ; 60: 80-85.
1925	Revue	Trissel LA , Williams KY, Gilbert DL. Compatibility screening of linezolid injection during simulated Y-site administration with other drugs and infusion solutions. J Am Pharm Assoc 2000 ; 40: 515-519.
2108	Revue	Trusley C, Kupiec TC, Trissel LA. Compatibility of micafungin injection with other drugs during simulated Y-site co-administration. Int J Pharm Compound 2006 ; 10: 230-232.
2227	Revue	Trusley C, Ben M, Kupiec TC, Trissel LA. Compatibility and stability of palonosetron hydrochloride with four neuromuscular blocking agents during simulated Y-site administration. Int J Pharm Compound 2008 ; 12, 2: 156-160.
2269	Revue	Chan P, Bishop A, Kupiec TC, Trissel LA, Gole D, Jimidar IM, Vermeersch H. Compatibility of ceftobiprole medocaril with selected drugs during simulated Y-site administration. Am J Health-Syst Pharm 2008 ; 65, 16: 1545-1551.
3134	Revue	Perez Jua En, Maqueda Palau M, Arévalo Rubert Mt, Ribas Nicolau B, Amoros Cerdà SM. Compatibilidad visual y física de la furosemida en mezclas intravenosas para perfusión continua. Enferm Intensiva 2010 ; 21: 96-103.
3212	Revue	Ribas Nicolau, B.; P?rez Juan, E.; Amor?s Cerd?, S.M.; Ar?valo Rubert, M.J.; Maqueda Palau, M. Compatibilidad física del bicarbonato sódico con fármacos de uso frecuente en la unidad de cuidados intensivos. Enferm Intensiva 2011 ;22:78-82.
3249	Revue	Singh BM, Dedhiya MG, Dinunzio J, Chan P, Kupiec TC, Trissel LA, Laudano JB. Compatibility of ceftaroline fosamil for injection with selected drugs during simulated Y-site administration. Am J Health-Syst Pharm 2011 ; 68: 2163-2169.
3429	Revue	Foushee J.A, Fox L.M, Gormley L.R, Lineberger M.S. Physical compatibility of cisatracurium with selected drugs during simulated Y-site administration Am J Health-Syst Pharm 2015 ; 72:483-486
3463	Revue	Eva Perez Juan, Maria Jos? Arévalo Rubert , Silvia Monica Amoros Cerda , Palau M.M, Nicolau B.R. Fármacos en perfusión continua en la unidad de cuidados intensivos: estudio de compatibilidad. Nursing 2011 ; 29 :62-6
3464	Revue	Monica Maqueda-Palau, Eva Pérez-Juan, Maria Josep Arévalo-Rubert, Sylvia Monica Amoros-Cerda, Bàrbara Ribas-Nicolau. Compatibilidad física de la amiodarona en perfusión continua Enferm Clin 2011 21:25-29.
3465	Revue	E. P?rez Juan, M. Maqueda Palau, M. Ar?valo Rubert, B. Ribas Nicolau, S.M. Amor?s Cerd?. Compatibilidad visual y física de la furosemida en mezclas intravenosas para perfusión continua. Enferm Intensiva 2010 ;21:96-103.

3466	Revue	B. Ribas Nicolau, E. P?rez Juan, S.M. Amor?s Cerd?, M.J. Ar?valo Rubert, M. Maqueda Palau. Compatibilidad f?sica del bicarbonato s?dico con f?rmacos de uso frecuente en la unidad de cuidados intensivos Enferm Intensiva 2011 ;22:78-82.
3540	Laboratoire	Heparin sodium - Summary of Product Characteristics. Wockhardt 2010
3601	Laboratoire	Cisatracurium Actavis - R?sum? des Caract?ristiques du Produit Actavis 2012
3823	Revue	Juan E.P, Palau M.M, Cerd? S.A, Rubert M.A, Nicolau B.R. Compatibilit? physique de m?dicaments administr?s dans l'unit? de soins intensifs Pharmactuel 2015 ; 48, 3 : 146-152.
3827	Poster	Ghazi I.M, Hamada Y, Nicolau D.P. Compatibility of tedizolid phosphate with selected intravenous drugs via simulated Y-site conditions. ASHP Midyear 2015
3828	Poster	Thabit A.K, Hamada Y, Nicolau D.P. Ceftazolidone/tazobactam physical compatibility during simulated Y-site administration. ASHP Midyear 2015
3829	Poster	So W, Kim L, Thabit A.K, Nicolau D.P, Kuti J.L. Compatibility of isavanazonium sulfate during simulated Y-site administration. ASHP Midyear 2015
3879	Revue	Foushee Jaime A, Meredith Pmichaele, Fox Laura M, Grace Edward E. Y-site Physical Compatibility of Beta-blocker Infusions with Intensive Care Unit Admixtures. Int J Pharm Compound 2016 ; 20, 4 : 328-332.
4055	Revue	Monogue M, Almarzoky Abuhussain S, Kuti J, Nicolau D. Physical compatibility of fosfomycin for injection with select i.v. drugs during simulated Y-site administration. Am J Health-Syst Pharm 2018 , 75, 1:36-44
4145	Revue	Asempta T.E, Avery L.M, Kidd J.M, Kuti J.L, Nicolau D.P. Physical compatibility of plazomicin with select i.v. drugs during simulated Y-site administration. Am J Health-Syst Pharm 2018 ;75,14:1048-1056
4358	Revue	Pignard J, Bourdeaux D, Kauffmann S, Constantin J.M, Sautou V. Stabilit? physico-chimique des solutions injectables de b?silate de cisatracurium dans les conditions cliniques d'utilisation Ann Fr Anesth R?anim 2014 ; 33, 5: 304-309.
4433	Revue	Ghazi I.M, El Nekidy W.S, Sood A, Dulku A, Patel R, Patel K. Y-site Administration of Imipenem/Cilastatin/ Relebactam With Common Intravenous Medications Clin Ther 2020 ; 42, 3: 475-485.
4434	Revue	Avery L.M, Chen, I.H, Reyes, S, Nicolau, D.P, Kuti J.L. Assessment of the Physical Compatibility of Eravacycline and Common Parenteral Drugs During Simulated Y-site Administration. Clin Ther 2019 ; 41, 10: 2162-2170.
4465	Revue	Foushee A, Meredith P, Fox Laura, Wilder A. Y-site physical compatibility of hydrocortisone continuous infusions with admixtures used in critically ill patients. Am J Health-Syst Pharm 2020 ;77,14:1144-1148
4491	Revue	De Basagoiti A, Katsumiti A, Abascal S, Bustinza A, L?pez-Gim?nez L.R, Pilar P, De Miguel M, Campino A. Physical compatibility of alprostadil with selected drugs commonly used in the neonatal intensive care units. Eur J Pedia 2020
4507	Revue	Ross E, Salinas A, Petty K, Her C, Carpenter J. Compatibility of medications with intravenous lipid emulsions: Effects of simulated Y-site mixing. Am J Health-Syst Pharm 2020 ;77,23:1980-1985
4528	Revue	Lu J, Liu Q, Kupiec T, Vail H, Lunch L, Fam D, Vu N. Physical Compatibility of Cefiderocol with Selected Intravenous Drugs During Simulated Y-site Administration. Int J Pharm Compound 2021 ;25,1:52-61

4569	Revue	Lee T.M , Villareal C.L, Meyer L.M. Y-Site Compatibility of Intravenous Levetiracetam With Commonly Used Critical Care Medications. Hosp Pharm 2021 ; 56, 4: 282-286.
4650	Laboratoire	Ceftobiprole (Zevtera 500 mg powder for concentrate for solution for infusion.) Summary of Product Characteristics, Advanz Pharma updated 4 aug 2021. Advanz Pharma 2021
4651	Revue	De Basagoiti A, Katsumiti A, Abascal S, Bustinza A, López-Giménez L.R, Pascual P, De Miguel M, Campino A. Physical compatibility of alprostadil with selected drugs commonly used in the neonatal intensive care units. Eur J Pediatr 2021 ;180,1169–1176.
4769	Revue	Roche M, Danel C, Simon N, Kouach M, Bouchfaa M, Berneron C, Odou P, Lannoy D. Cisatracurium Besylate 10 mg/mL Solution Compounded in a Hospital Pharmacy to Prevent Drug Shortages : A Stability Study Involving Four Degradation Products. Pharmaceutics 2023 ;15,1404
4801	Revue	Ruiz V, Yuwei Shen Y, Abouelhassan Y, Fouad A, Nicolau D, Kuti J. Physical compatibility of sulbactam/durlobactam with select intravenous drugs during simulated Y-site administration. Am J Health-Syst Pharm 2024 ;51,1:



Dictionnaire

 Curarisant	 Injectable
 Noms commerciaux	 Stabilité des solutions
 Contenant	 Molécule
 Concentration	 Température
 Conservation	 Durée de stabilité
 Biosimilaire	 Données conflictuelles
 Bibliographie	 Verre
 Aucun	 A l'abri de la lumière
 Jour	 Avec ou sans lumière
 Polyvinyl chlorure	 NaCl 0,9% ou glucose 5%
 Polyoléfine	 Chlorure de sodium 0,9%
 Non précisée	 Heure
 Glucose 5%	 Seringue polypropylène
 Stabilité en mélange	 Solvant
 Molécule	 Facteur influençant la stabilité
RL Ringer lactate	 Provoque
 Dégradation	 NaHCO3
 Compatibilités	 Précipitation immédiate
 Incompatible	 Compatible
 Turbidité en 1 heure	 Turbidité immédiate
 Turbidité en 4 heures	 Incompatibilité non précisée
 Instabilité de l'émulsion à 4 heures	 Nutrition parentérale (mélange ternaire)
 Changement de couleur	 Solvant spécifique
 Précipitation en 4 heures	 Turbidité en 2 heures
 Voie d'administration	 Intraveineuse
 Perfusion continue	 Bibliographie
 Dictionnaire	